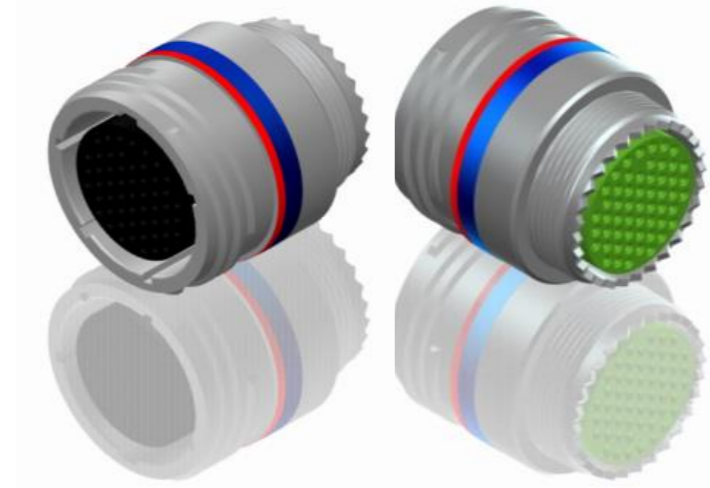


H G F E D C B A

4

4



LAYOUT SHOWN AS EXAMPLE

3

3

Keying Shown as example

CHARACTERISTICS

- Standard : Based on MIL-DTL-38999 Series III
- Shell Material : Aluminium
- Shell Plating : Nickel
- Insulator : Thermoplastic
- Contacts : Copper Alloy
- Seals & Grommet : Silicon Elastomer
- Contact Plating : Gold over copper Alloy 0.8µm minimum
- Durability : 500 Mating cycles
- Delivered with Souriau contacts and Accessories
- Temperature Range : -65°C to +200°C
- Salt Spray : 48 hours

| Connector dimension | |
|---------------------|-----------|
| Dim | Nominal |
| F | 30.15 Max |
| Z | 31.5 Max |
| VV THREAD | M25x1-6g |

SOURIAU shall not be liable for any non-conformity or damage due to a use of the Products which does not comply with the Specifications issued by either of the Parties or by a third party (professional recommendation, technical notice.)

| Country | Jurisdiction & Control List |
|---------|-----------------------------|
| FR | Not Listed |

PN: 8D117F26BA

| | | | |
|-----|------------|--------------------------|--------|
| A | 23-09-2016 | First Release | |
| ISS | DATE | Latest modification - by | MOD N° |

Designed By: _____ Date: _____ **CUSTOMER DRAWING**

| TITLE | Aluminium Inline plug 8D series | | |
|-------|---------------------------------|--|--|
|-------|---------------------------------|--|--|

| | | | |
|-------|--|----------------------------|-----------------|
| SCALE | | General linear Tolerances: | NPRDS / PROJECT |
| NA | | ±-- | 859 |

| | | |
|----------------|------------------------|--|
| SOURIAU | WWW.SOURIAU.COM | This document is the property of SOURIAU it must not be reproduced or communicated without permission |
|----------------|------------------------|--|

| | | | | |
|--------|-----------|------------------------------------|-------|-----|
| FORMAT | A3 | SOURIAU DRG N° 8D117F26BA-C | SHEET | 1/2 |
|--------|-----------|------------------------------------|-------|-----|

| | | | | | | | | | |
|----------------|------------------------|---|---|----|---|----|---|---|------------------------------------|
| BASIC SERIES: | 8D | 1 | - | 17 | F | 26 | B | A | ORIENTATION : A |
| SHELL TYPE : | In line Receptacle | | | | | | | | CONTACT TYPE : SOCKET(500 Matings) |
| CONTACT TYPE : | Standard Crimp Contact | | | | | | | | CONTACT LAYOUT : 17-26 |
| SHELL SIZE : | 17 | | | | | | | | |
| PLATING : | F = Nickel | | | | | | | | |

2

2

1

1

H G F E D C B A

4
3
2
1

4 3 2 1

H G F E D C B A

H G F E D C B A

4 3 2 1

4 3 2 1

Contact Layout



| Contacts (Insert arrangement 17-26) | | | | | |
|--|------------------|-------------|---------------------|------------------|-------------|
| Contact position ID | Contact location | | Contact position ID | Contact location | |
| | X-axis (mm) | Y-axis (mm) | | X-axis (mm) | Y-axis (mm) |
| A | +000 (0.00) | +321 (8.15) | P | -239 (6.07) | +214 (5.44) |
| B | +131 (3.33) | +293 (7.44) | R | -131 (3.33) | +293 (7.44) |
| C | +239 (6.07) | +214 (5.44) | S | -070 (1.78) | +177 (4.50) |
| D | +305 (7.75) | +099 (2.51) | T | +070 (1.78) | +177 (4.50) |
| E | +319 (8.10) | -034 (0.86) | U | +175 (4.45) | +094 (2.39) |
| F | +278 (7.06) | -161 (4.09) | V | +178 (4.52) | -036 (0.91) |
| G | +189 (4.80) | -260 (6.60) | W | +119 (3.02) | -151 (3.84) |
| H | +067 (1.70) | -314 (7.98) | X | +000 (0.00) | -203 (5.16) |
| J | -067 (1.70) | -314 (7.98) | Y | -119 (3.02) | -151 (3.84) |
| K | -189 (4.80) | -260 (6.60) | Z | -178 (4.52) | -036 (0.91) |
| L | -278 (7.06) | -161 (4.09) | a | -175 (4.45) | +094 (2.39) |
| M | -319 (8.10) | -034 (0.86) | b | +000 (0.00) | +065 (1.65) |
| N | -305 (7.75) | +099 (2.51) | c | +000 (0.00) | -065 (1.65) |

| Shell size | Arrangement no. | Number of contacts | Size contacts | Service rating | Contact position ID | Supersedes |
|------------|-----------------|--------------------|---------------|----------------|---------------------|------------|
| 17 | -26 | 26 | 20 | I | All | MS20053-26 |

SOURIAU shall not be liable for any non-conformity or damage due to a use of the Products which does not comply with the Specifications issued by either of the Parties or by a third party (professional recommendation, technical notice.)

| Country | Jurisdiction & Control List |
|---------|-----------------------------|
| FR | Not Listed |

PN: 8D117F26BA

| | | | |
|----------------|------------------------------------|----------------------------|---|
| A | 23-09-2016 | First Release | |
| ISS | DATE | Latest modification - by | MOD N° |
| Designed By: | | Date: | CUSTOMER DRAWING |
| TITLE | Aluminium Inline plug 8D series | | |
| SCALE | | General linear Tolerances: | NPRDS / PROJECT |
| NA | | ±-- | 859 |
| SOURIAU | WWW.SOURIAU.COM | | This document is the property of SOURIAU it must not be reproduced or communicated without permission |
| FORMAT | SOURIAU DRG N° 8D117F26BA-C | | SHEET 2/2 |