

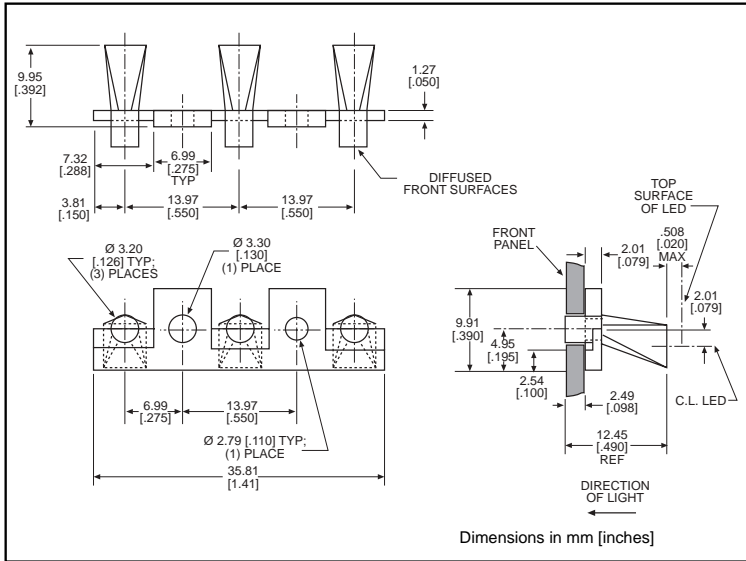


# 3.2mm Round *microLED*® Optopipe™



## Optical Light Pipe, 3 Array Panel Mounted

# 515-1032



## LEDs for use with 515-1032

<u>Recommended</u>	<u>PAGE #</u>
521-9247	6-44
521-9249	6-44
521-9251	6-44
550-xx10	6-17
550-5504	6-9
550-5505	6-11
550-5507	6-13
550-5508	6-15
550-5604	6-9
550-5605	6-11
550-5607	6-13
550-5608	6-15
550-5704	6-9
550-5705	6-11
550-5707	6-13
550-5708	6-15

# 2

### Features

- High transmissivity polycarbonate material
- UL94V-0 compliance
- ESD protection (circuit isolation from front panel)
- Wide viewing angle
- Arrays reduce insertion costs
- Secures to panel by heat staking

<u>Alternatives</u>	<u>PAGE #</u>
521-9430	4-61
521-9431	4-61
521-9432	4-61

LED alternatives may not produce optimum light output

### LED Data

For absolute maximum ratings and other electrical and optical data on the recommended LEDs, refer to LED data sheets.

### Operating/Storage Temperature

-30°C to +100°C

### Dialight Optopipe Light Pipe Description

This Optopipe™ is heat staked to the inside of the customer's plastic housing. The light pipe is accurately positioned on the case by 2 unequally sized holes located in the tabs at the front of the part. The light pipe is not attached to the PCB at any point, but floats in front of it. The rectangular funnel end faces the edge of a circuit board upon which are mounted Dialight's 550 Series Circuit Board Indicators. The tubular sections fit through the plastic panel. The light emitting surface is textured to diffuse the light passing through it. The light source can be any super-bright 2mm, 3mm, or 5mm LED, or one of Dialight's 597 Series SMT LEDs. The emitting surface of the light source should be located no more than 0.020" or 0.5mm from the Optopipe™. The CBIs are mounted in a straight line facing the rear of the part on a 0.550" pitch. The light pipe material is water clear transmissive polycarbonate rated UL94-V0, and has a 35% oxygen index.

Dialight can provide custom Optopipe™ solutions for your applications.