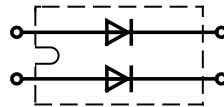


Fast Recovery Epitaxial Diode (FRED)

$I_{FAVM} = 2x\ 123\ A$
 $V_{RRM} = 200\ V$
 $t_{rr} = 35\ ns$

V_{RSM} V	V_{RRM} V	Type
200	200	DSEI 2x 121-02A


miniBLOC, SOT-227 B


Symbol	Test Conditions	Maximum Ratings (per diode)	
I_{FRMS}	$T_{VJ} = T_{VJM}$	150	A
I_{FAVM} ①	$T_C = 70^\circ C$; rectangular, $d = 0.5$	123	A
I_{FRM}	$t_p < 10\ \mu s$; rep. rating, pulse width limited by T_{VJM}	600	A
I_{FSM}	$T_{VJ} = 45^\circ C$; $t = 10\ ms\ (50\ Hz),\ sine$ $t = 8.3\ ms\ (60\ Hz),\ sine$	1200	A
		1300	A
	$T_{VJ} = 150^\circ C$; $t = 10\ ms\ (50\ Hz),\ sine$ $t = 8.3\ ms\ (60\ Hz),\ sine$	1080	A
		1170	A
I^2t	$T_{VJ} = 45^\circ C$; $t = 10\ ms\ (50\ Hz),\ sine$ $t = 8.3\ ms\ (60\ Hz),\ sine$	7200	A ² s
		7100	A ² s
	$T_{VJ} = 150^\circ C$; $t = 10\ ms\ (50\ Hz),\ sine$ $t = 8.3\ ms\ (60\ Hz),\ sine$	5800	A ² s
		5700	A ² s
T_{VJ}		-40...+150	°C
T_{VJM}		150	°C
T_{stg}		-40...+150	°C
P_{tot}	$T_C = 25^\circ C$	250	W
V_{ISOL}	50/60 Hz, RMS $I_{ISOL} \leq 1\ mA$	2500	V~
M_d	Mounting torque	1.5/13	Nm/lb.in.
	Terminal connection torque (M4)	1.5/13	Nm/lb.in.
Weight		30	g

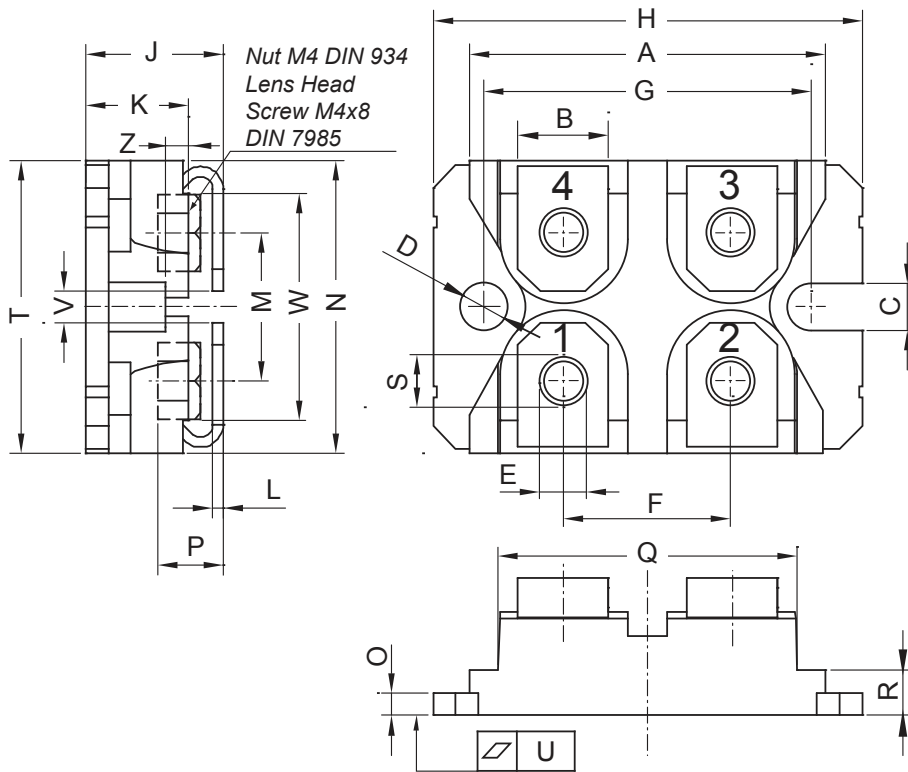
Features

- International standard package miniBLOC (ISOTOP compatible)
- Isolation voltage 2500 V~
- 2 independent FRED in 1 package
- Planar passivated chips
- Very short recovery time
- Extremely low switching losses
- Low I_{RM} -values
- Soft recovery behaviour

Symbol	Test Conditions	Characteristic Values (per diode)	
		typ.	max.
I_R	$T_{VJ} = 25^\circ C$; $V_R = V_{RRM}$		1 mA
	$T_{VJ} = 25^\circ C$; $V_R = 0.8 \cdot V_{RRM}$		0.5 mA
	$T_{VJ} = 125^\circ C$; $V_R = 0.8 \cdot V_{RRM}$		20 mA
V_F	$I_F = 120\ A$; $T_{VJ} = 150^\circ C$ $T_{VJ} = 25^\circ C$	0.89	0.95 V
			1.10 V
V_{T0}	For power-loss calculations only		0.7 V
r_T	$T_{VJ} = T_{VJM}$		2.1 mΩ
R_{thJC}			0.5 K/W
R_{thCK}		0.1	K/W
t_{rr}	$I_F = 1\ A$; $-di/dt = 400\ A/\mu s$; $V_R = 30\ V$; $T_{VJ} = 25^\circ C$	35	50 ns
I_{RM}	$V_R = 100\ V$; $I_F = 100\ A$; $-di_F/dt = 200\ A/\mu s$ $L \leq 0.05\ \mu H$; $T_{VJ} = 100^\circ C$	12	15 A

① I_{FAVM} rating includes reverse blocking losses at T_{VJM} , $V_R = 0.8 V_{RRM}$, duty cycle $d = 0.5$
Data according to IEC 60747

miniBLOC, SOT-227 B



Dim.	Millimeter		Inches	
	min	max	min	max
A	31.50	31.88	1.240	1.255
B	7.80	8.20	0.307	0.323
C	4.09	4.29	0.161	0.169
D	4.09	4.29	0.161	0.169
E	4.09	4.29	0.161	0.169
F	14.91	15.11	0.587	0.595
G	30.12	30.30	1.186	1.193
H	37.80	38.23	1.488	1.505
J	11.68	12.22	0.460	0.481
K	8.92	9.60	0.351	0.378
L	0.74	0.84	0.029	0.033
M	12.50	13.10	0.492	0.516
N	25.15	25.42	0.990	1.001
O	1.95	2.13	0.077	0.084
P	4.95	6.20	0.195	0.244
Q	26.54	26.90	1.045	1.059
R	3.94	4.42	0.155	0.167
S	4.55	4.85	0.179	0.191
T	24.59	25.25	0.968	0.994
U	-0.05	0.10	-0.002	0.004
V	3.20	5.50	0.126	0.217
W	19.81	21.08	0.780	0.830
Z	2.50	2.70	0.098	0.106

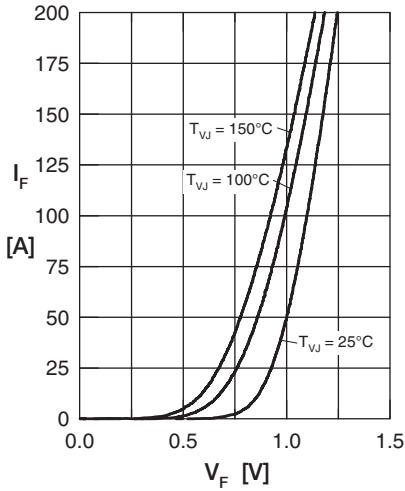


Fig. 1 Forward current I_F versus V_F

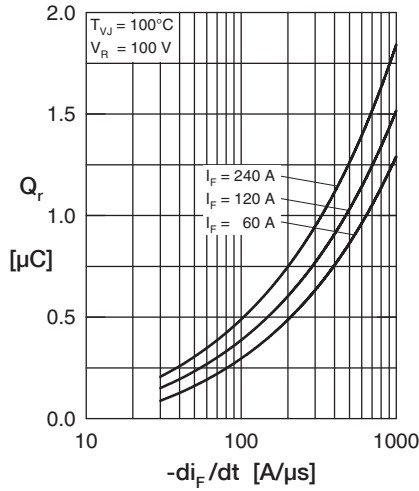


Fig. 2 Typ. reverse recov. charge Q_r versus $-di_F/dt$

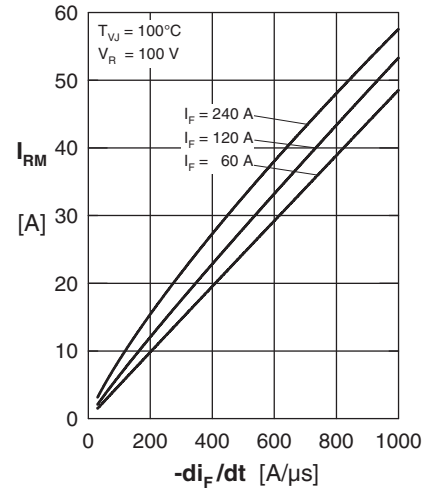


Fig. 3 Typ. peak reverse current I_{RM} versus $-di_F/dt$

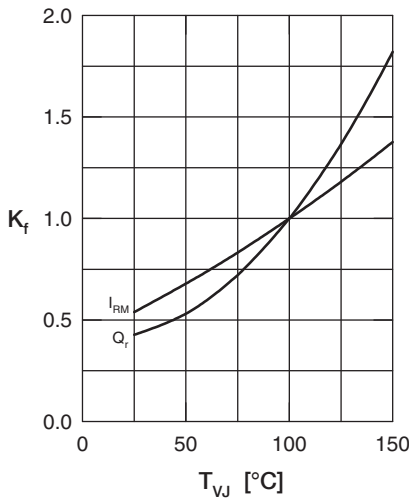


Fig. 4 Typ. dyn. parameters Q_r , I_{RM} versus T_{VJ}

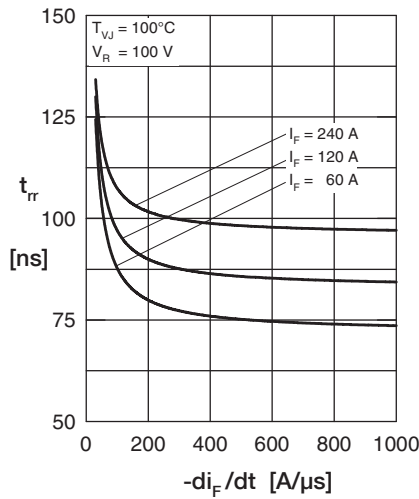


Fig. 5 Typ. recovery time t_{rr} versus $-di_F/dt$

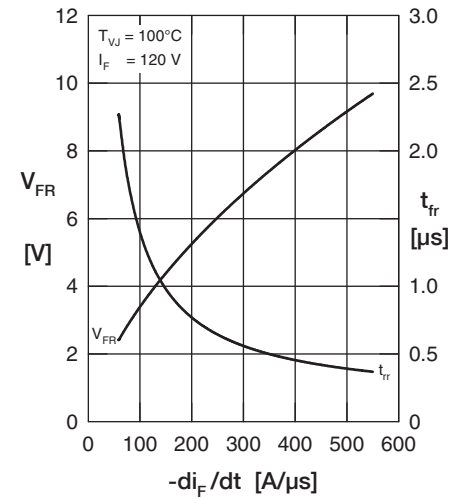


Fig. 6 Typ. peak forward voltage V_{FR} and t_{rr} versus di_F/dt

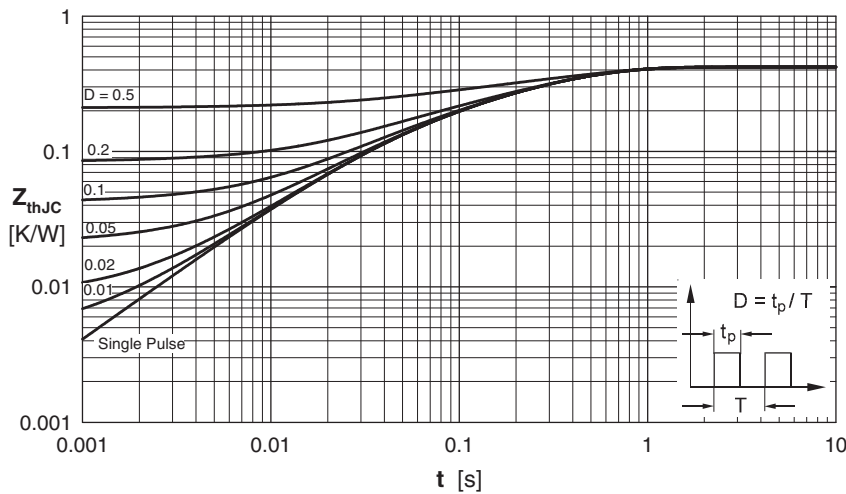


Fig. 7 Transient thermal impedance junction to case

Constants for Z_{thJC} calculation:

i	R_{thi} (K/W)	t_i (s)
1	0.0725	0.0028
2	0.1423	0.0092
3	0.2852	0.0350