

**Technical specification:**

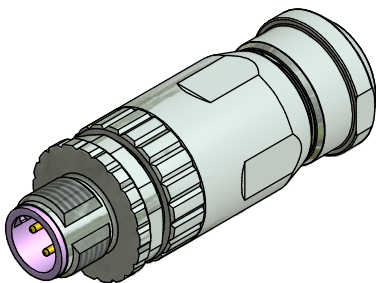
Rated voltage: IEC 61076-2-101	250 V
Current rating: IEC 61076-2-101	4 A at 40°C
Insulation resistance: IEC 60512	>=100 MΩ
Pollution degree: IEC 60664-1	3/2
Degree of protection: IEC 60529	IP 67, in mated condition
Temperature range: IEC 60664-1	-30°C ... +85°C
Mating cycles: IEC 60512-9a	>=100
Wire cross section:	AWG20 / max. 0,5 mm²

**Materials:**

Contact:	CuZn
Contact plating:	Nickel, gold plated
Contact carrier:	PA6, UL 94
Clamp/ screw contact:	Stainless steel / steel nickel plated
Cable seal:	Elastomere
O-Ring:	FPM
Coupling screw:	GD-Zn, nickel plated
Housing:	GD-Zn, nickel plated

**Installation specification:**

Recommended torque:	0,6 Nm
Conec installation tool:	Torque wrench: 36-000200 Insert across flats 18: 36-000240



	Part no:	Description:	Pos:	Cable-Ø:
Clamp connection	43-00077	SAL - 12B - RSC4 - K8	4	6 - 8,5 mm
Screw connection	43-00079	SAL - 12B - RSC4 - S8	4	6 - 8,5 mm

DO NOT ALTER CAD DRAWING BY HAND  
Directive 2002/95/EC RoHS compliant

Index: a 07.02.2011 dbu Ä3903  
Coupling nut modified, spanner flats added,  
data sheet modified

THIS DRAWING MAY NOT BE COPIED OR  
REPRODUCED IN ANY WAY, AND MAY NOT  
BE PASSED ON TO A THIRD PARTY WITHOUT  
WRITTEN PERMISSION.  
OWNERSHIP AND COPYRIGHT OF CONEC GmbH

	dim. in mm	
	date	name
drawn	07.02.08	Franz
appd.	11.02.08	Schmidt



title:  
**Male connector M12x1,  
field attachable, axial,  
with clamp/ screw connection, Profibus DP**

dwg no:  
**43K1A514**

part no:  
**see table**