

ATLANTIC VERSION TERMINATOR INTERFACE ADAPTER	PART NUMBER	REVISION	DESCRIPTION	FEED TYPE	CONVERT TO	PART NUMBERS REQUIRED					
	2151679-1	B	FINE CRIMP HEIGHT ADJUST	MECHANICAL	PNEUMATIC FEED	2119950-1	1338685-1	5-18022-5	2119641-1	2119799-1	2063440-1
	2151679-2	B	FINE CRIMP HEIGHT ADJUST	PNEUMATIC	SERVO LATCH PLATE	2119951-1	-	8-2151679-5	1901094-3	1-1752354-8	2168400-6 (QUANTITY 2)
					SMART APPLICATOR	2161326-1	-	8-2151679-4	-	-	
					MECHANICAL FEED	2119949-1	1338685-1	5-18022-5	2119653-1	-	-
	2151679-5	B	FINE CRIMP HEIGHT ADJUST	SERVO LATCH PLATE	SERVO LATCH PLATE	2119951-1	-	8-2151679-5	1901094-3	1-1752354-8	2168400-6 (QUANTITY 2)
					SMART APPLICATOR	2161326-1	-	8-2151679-4	-	-	
	2151679-6	B	NON-CRIMP HEIGHT ADJUST	SERVO LATCH PLATE	MECHANICAL FEED	2119949-1	1338685-1	5-18022-5	2119653-1	-	-
2151679-7	B	FINE CRIMP HEIGHT ADJUST	NONE	PNEUMATIC FEED	2119950-1	1338685-1	5-18022-5	2119641-1	2119799-1	2063440-1	
7-2151679-7	A	CRIMP TOOLING KIT	-	-	-	-	-	-	-	-	

APPLICATOR DATA		
CRIMP	SIZE	TYPE
WIRE	1.00 mm [.039]	F
INSUL	1.07 mm [.042]	O

APPLICATOR INSTRUCTIONS 408-10389

TERMINAL DATA: TE TERMINAL	TE CRIMP SPECIFICATION
TERMINAL NAME: CONTACT, FEMALE, UNSEALED, 0.50 SERIES	
WIRE STRIP LENGTH 3.00-3.50 mm [.118-.138 IN]	INSULATION DIAMETER RANGE Ø0.85-1.05 mm [.033-.041 IN]
TERMINAL APPLICATION SPECIFICATION (B)114-5379	
TERMINALS APPLIED	
TE TERMINAL	TE TERMINAL
(B) 1827855-4	

WIRE SIZE	CRIMP HEIGHT mm [INCH]	CRIMP HEIGHT REFERENCE SETTING
0.22mm2	0.64 +/- 0.02 [.025 +/- .001]	7.1
0.13mm2	0.57 +/- 0.05 [.022 +/- .002]	7.8

- 1 RECOMMENDED SPARE PARTS
- 2 GREASE BEARING SURFACES LIGHTLY
- 3 LUBRICATE DAILY PER THE APPLICATOR INSTRUCTION SHEET SUPPLIED WITH THE APPLICATOR.
- 4 APPLICATOR SPECIFIC DATA TO BE ENTERED INTO BLANK MEMORY CHIP AT ASSEMBLY. SEE BELOW FOR PART NUMBER:
MECHANICAL FEED WITH "SMART APPLICATOR" CONVERSION: 8-2151679-4
PNEUMATIC FEED WITH "SMART APPLICATOR" CONVERSION: 8-2151679-4
SERVO FEED WITH "FINE CRIMP HEIGHT ADJUST": 8-2151679-5
SERVO FEED WITH "NON-CRIMP HEIGHT ADJUST": 8-2151679-6
- 5 ADJUSTMENT OF THE STRIPPER MAY BE REQUIRED WHEN MOVING THE APPLICATOR BETWEEN BENCH AND LEADMAKER APPLICATIONS.
- 6 APPLY PART NUMBER 1-23419-5 LOCTITE TO THREADS OF ITEMS 62,180
APPLY PART NUMBER 2-23419-6 LOCTITE TO THREADS OF ITEMS 242.
FOR -6 ONLY APPLY PART NUMBER 1-23419-5 LOCTITE TO THREADS OF ITEM 37.
- 7 GREASE THREADS, GROOVE AND O-RING ON ITEMS 35 & 252.
- 8 MAGNET, ITEM 166 MUST BE ORIENTED CORRECTLY IN ORDER TO PROPERLY ACTUATE THE COUNTER.
- 9 CRIMP HEIGHT REFERENCE SETTING WAS THE SETTING USED WHEN THE APPLICATOR WAS QUALIFIED AT THE FACTORY. ADJUSTMENT MAY BE NECESSARY WHEN RUNNING APPLICATOR IN THE FIELD.
- 10 SPARE FEED CAM STORAGE LOCATION REFER TO INSTRUCTION SHEET FOR ADDITIONAL INFORMATION.
- 11 TO CONVERT THE APPLICATOR TO A NON-CARRIER CUTTING STYLE, REMOVE ITEM 13 AND ATTACH TO THE LOCATION ON THE BACK SIDE OF THE HOUSING. REFER TO INSTRUCTION SHEET FOR ADDITIONAL INFORMATION.
- 12 WHEN ASSEMBLING A NON CRIMP HEIGHT ADJUST APPLICATOR (-6) USE SHIMS FROM ITEM 260 TO ACHIEVE A NOMINAL SHIM HEIGHT OF 5.16.
- 13 FEED ADJUSTMENT REQUIRED WHEN CHANGING TERMINAL APPLIED.
- 14 TERMINAL LUBRICANT IS RECOMMENDED.

***WARNING**
ON INSTALLATION, SET WIRE DISC, ITEM 40 TO LARGEST WIRE SIZE SETTING. USE OF SETTINGS BELOW MINIMUM REQUIRED CRIMP HEIGHT SETTING WILL CAUSE DAMAGE TO CRIMP TOOLING.

ITEM NO	DESCRIPTION	ITEM NO
260	APPLICATOR SHIM PACK	260
252	O-RING, .676 ID, .070 DIA. MAT.	252
250	PUSH ROD, AIR FEED	250
249	BUSHING, LCH5-12, MISUMI	249
248	FEED CAM, AIR FEED	248
247	DETENT PIN	247
246	SPRING, COMPRESSION	246
245	RAM, AMP STYLE, SIDE FEED, NON-ADJ.	245
244	CAM, SNAIL, INSULATION ADJUSTMENT	244
243	WASHER, WAVE SPRING, CREST-TO-CREST	243
242	RETAINER, INSULATION DIAL	242
-77	PART NO	DESCRIPTION

ATLANTIC VERSION
Shown on sheets 1 of 4 & 2 of 4
(Pacific version shown on sheets 3 of 4 & 4 of 4)

SET UP GAUGE	LOC	DIST	REVISIONS			
2119599-1	A	66	REV	DATE	BY	APPD
			B	30JUN2016	MR	TE
			B1	23NOV2016	RS	LZ

ITEM NO	DESCRIPTION	DATE	BY	APPD
- 1	1 1 1 1 1	7-18023-7	SCR, SKT HD CAP M3 X 4.0	241
- -	2 2 - - -	2168400-6	SHCS, LOW HEAD, RoHS, M5 X 16	240
- -	- - - - 1	2119580-1	MECHANICAL FEED ASSEMBLY	239
- -	- - - - 1	2063440-1	AIR FEED MODULE	238
- 2	2 2 2 2 2	1-2079383-0	SCR, BHSC, RoHS (M3 X 6)	230
- -	1 1 - - -	2119740-2	TAG, IDENTIFICATION	213
- -	- 1 1 - -	1901094-3	SPACER, FEEDER	198
- 1	1 1 1 1 1	1-1752354-8	STANDOFF, HOLD-DOWN	180
- 1	1 1 1 1 1	1976053-9	LOCATER BLOCK, TERMINAL	179
- 1	1 1 1 1 1	993111-1	PIN, SLOTTED SPRING 3.0 X 20.0	177
- 1	1 1 1 1 1	8-22280-7	SPRING, COMPRESSION	176
- 1	1 1 1 1 1	1752353-2	GUIDE PIN, HOLDDOWN	175
- 1	1 1 1 1 1	1901680-2	GUIDE PIN, HOLDDOWN	174
- -	- - - 2 -	21045-3	RING, RETAIN, EXTERN, 3/16 CRESCENT	172
- 1	1 1 1 1 1	994969-1	MAGNET, RARE EARTH HIGH ENERGY	166
- REF	REF REF REF REF	994970-2	COUNTER, MAGNETIC	164
- -	- - - 1 -	240638-1	SPRING, FEED FINGER	163
- -	- - - 1 -	3-23627-7	PIN, RETAIN, GRVD, 3/16 X .854	137
- -	- - - 1 -	2119799-1	HOLDER, FEED FINGER, AF	136
- -	REF REF - - -	SEE NOTE 4	MEMORY CHIP, PROGRAMMED	135
- -	1 1 - - -	1633743-1	SERVO FEED LATCH ASM	133
- 1	1 1 1 1 1	1-18028-2	WASHER, FLAT, REG M4	119
- -	REF REF - - -	2119944-1	FEED FINGER ASSEMBLY, SF	117
- 1	1 1 1 1 1	2119955-1	ASSY, LUBRICATOR, SIDE FEED	113
- 1	1 1 1 1 1	455888-8	SPACER, CRIMPER	82
- 1	1 1 1 1 1	5-547505-2	SPRING, COMPRESSION	77
- 1	1 1 1 1 1	854769-4	HOLDER, INS	74
- 1	1 1 1 1 1	2119956-1	DOCUMENTATION PACKAGE	71
- 1	- - - 1 1	2119740-1	TAG, IDENTIFICATION	67
- 2	2 2 2 2 2	2168078-1	SCREW, DRIVE, RH, RoHS, 2 x .188	66
- 1	- - 1 1 1	2119793-1	LIMITER, ADJUSTMENT BOLT	63
- 3	- 3 3 3 3	992763-5	SCR, SET, SOC, CONE POINT, M3 X 4.0	62
- 1	1 1 1 1 1	2079383-4	SCR, BHSC, RoHS (M4 X 8)	60
- -	- - - 1 1	5-18022-5	SCR, HEX HD CAP, M4 X 6.0	59
- 1	1 1 1 1 1	21028-2	PIN, SLOTTED SPRING .062 X .250	58
- -	- - - 1 1	1338685-1	PAWL, FEED	56
- 4	4 4 4 4 4	2168400-1	SHCS, LOW HEAD, RoHS, M4 X 12	54
- 1	1 1 1 1 1	1-5018030-0	NUT, HEX, REG, RoHS, M3.5	52
- 1	1 1 1 1 1	1901681-4	HOLDDOWN, TERMINAL	51
- -	- - - 1 2	18023-9	SCR, SKT HD CAP M4 X 6.0	49
- -	- - - - 1	2119652-1	FEED CAM, PRE FEED	48
- -	- - - - 1	2119653-1	FEED CAM, POST FEED	47
- 1	1 1 1 1 1	2119656-9	APPLICATOR BASIC ASSEMBLY, SF	46
- 1	- - 1 1 1	2119370-1	RAM, AMP STYLE, SIDE FEED	44
- 1	1 1 1 1 1	2079383-7	SCR, BHSC, RoHS (M8 X 25)	41
- 1	- - 1 1 1	2119645-1	DISC, NUMBERED FA WIRE ADJUSTMENT	40
- 1	- - 1 1 1	2119957-1	APPLICATOR SHIM PACK	39
- 1	1 1 1 1 1	1-2119644-4	RAM WASHER, PRECISION	38
- 1	1 1 1 1 1	2119085-1	FA HEAD, ATLANTIC STYLE	37
- 1	- - 1 1 1	2119092-1	BOLT, ADJUSTMENT	35
- 1	1 1 1 1 1	1-1752356-6	SUPPORT, TERMINAL	34
- 2	2 2 2 2 2	2079383-5	SCR, BHSC, RoHS (M4 X 20)	33
- 1	1 1 1 1 1	2161328-1	HEX HEAD, FLANGED, M5 X 8mm LONG	32
- 1	1 1 1 1 1	1320908-2	SPACER, STRIP GUIDE	30
- 1	1 1 1 1 1	2119959-1	ASSEMBLY, STRIP GUIDE	29
- 1	1 1 1 1 1	455888-3	SPACER, CRIMPER	28
- 1	1 1 1 1 1	1320928-2	STRIP GUIDE	24
- 1	1 1 1 1 1	2168083-2	SCR, SKT HD CAP, RoHS, M4 X 8.0	21
- 1	1 1 1 1 1	1-18028-2	WASHER, FLAT, REG M4	20
- 1	1 1 1 1 1	2119533-1	STRIPPER, SIDE FEED	19
- 1	1 1 1 1 1	2119806-1	INSERT, SHEAR	13
- 1	1 1 1 1 1	3-22280-3	SPRING, COMPRESSION	12
- 1	1 1 1 1 1	1-356885-4	STOP, SHEAR	11
- 1	1 1 1 1 1	2119805-1	SHEAR HOLDER, FRONT	10
- 1	1 1 1 1 1	1633861-1	SHEAR, FLOATING	9
1	1 1 1 1 1	3-1633711-1	ANVIL, COMBINATION	8
- -	- - - - -	-	-	7
- -	- - - - -	-	-	6
- 1	1 1 1 1 1	2119780-9	DEPRESSOR, SHEAR	5
- 1	1 1 1 1 1	3-238011-8	BLOCK, CRIMPER SPACER	4
1	1 1 1 1 1	1633966-3	CRIMPER, INSULATION O	3
- -	- - - - -	-	-	2
1	1 1 1 1 1	3-1633713-7	CRIMPER, WIRE PREMIUM	1
-77	-7 -6 -5 -2 -1	PART NO	DESCRIPTION	ITEM NO

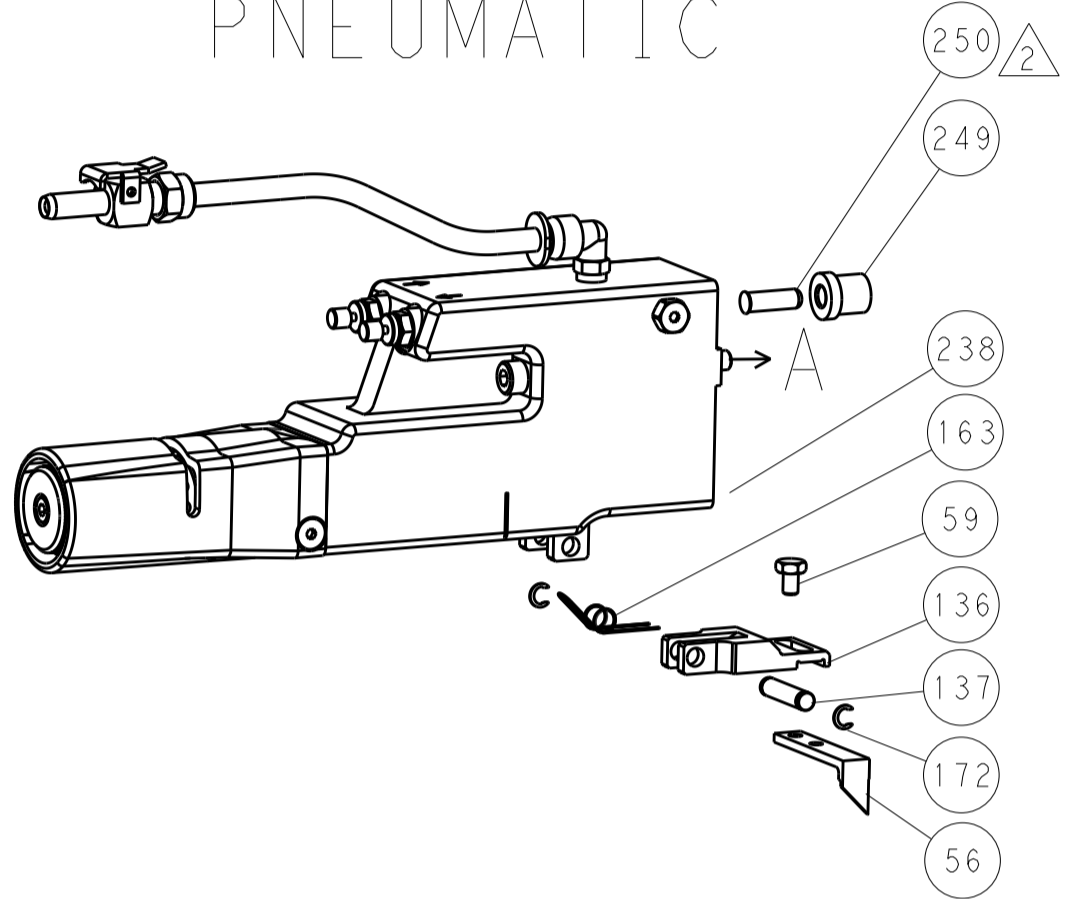
DIMENSIONS:		TOLERANCES UNLESS OTHERWISE SPECIFIED:		DATE	BY	APPD	NAME
mm	0 PLC ±	1 PLC ±	2 PLC ±	17JUN2013	CHU	LI	TE Connectivity
	3 PLC ±	4 PLC ±	ANGLES ±	17JUN2013	L	ZHANG	Harrisburg, PA 17105-3608
	FINISH						Ocean Side Feed Applicator
MATERIAL		WEIGHT		SIZE	CAGE CODE	DRAWING NO	RESTRICTED TO
				A1	00779	©=2151679	
Customer Accessible Production Drawing				SCALE	SHEET	OF	REV
				1:2	1	4	B1

LOC		DIST		REVISIONS			
A	66	P	LTM	DESCRIPTION	DATE	OWN	APVD
		-	-	SEE SHEET 1	-	-	-

FEED TYPE MECHANICAL



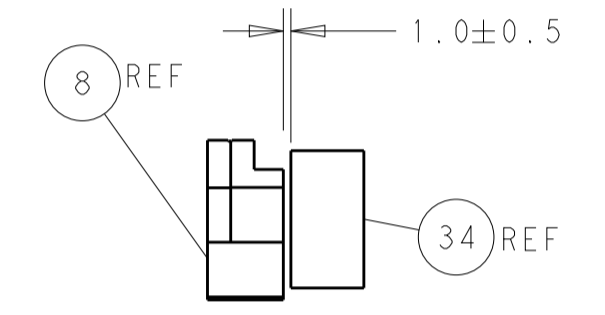
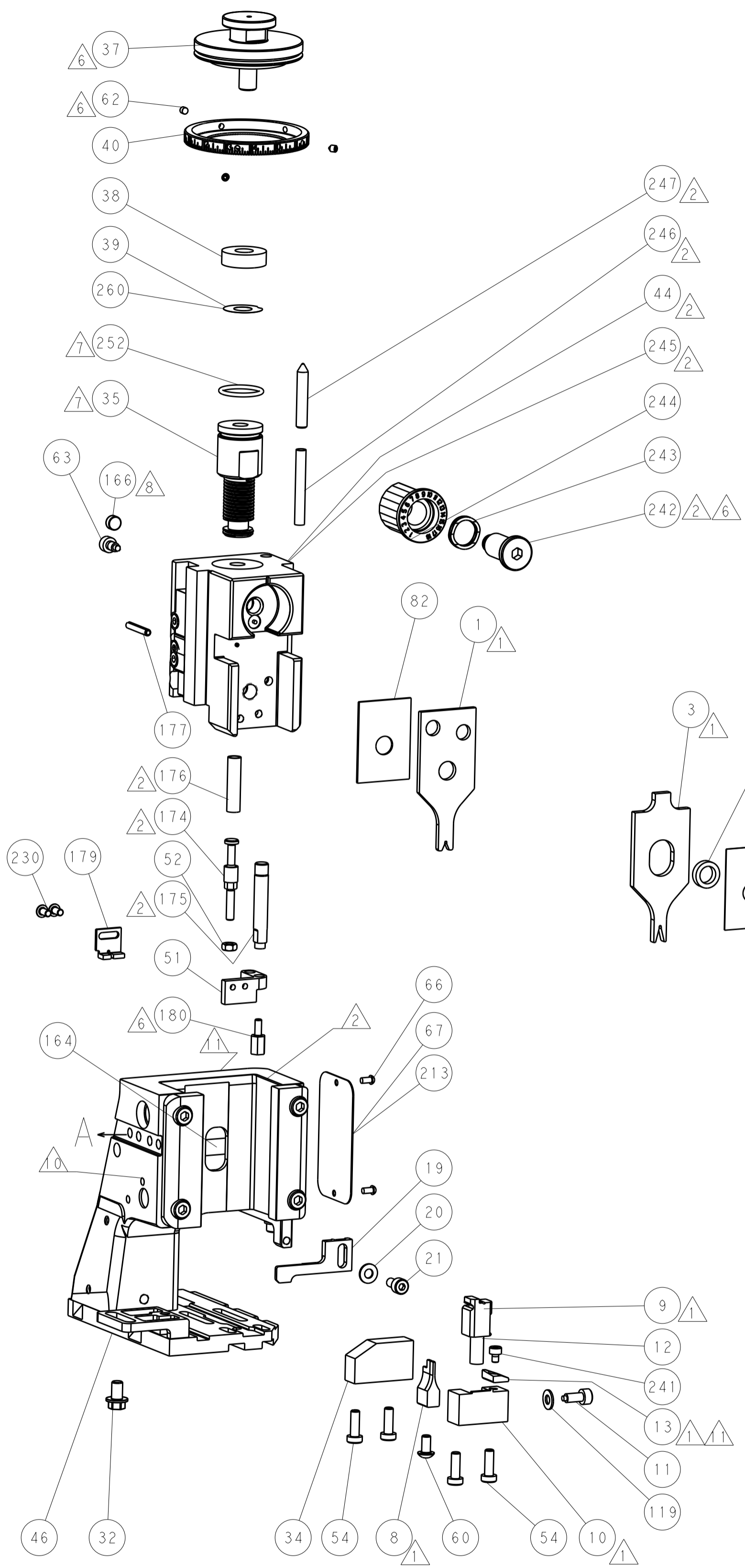
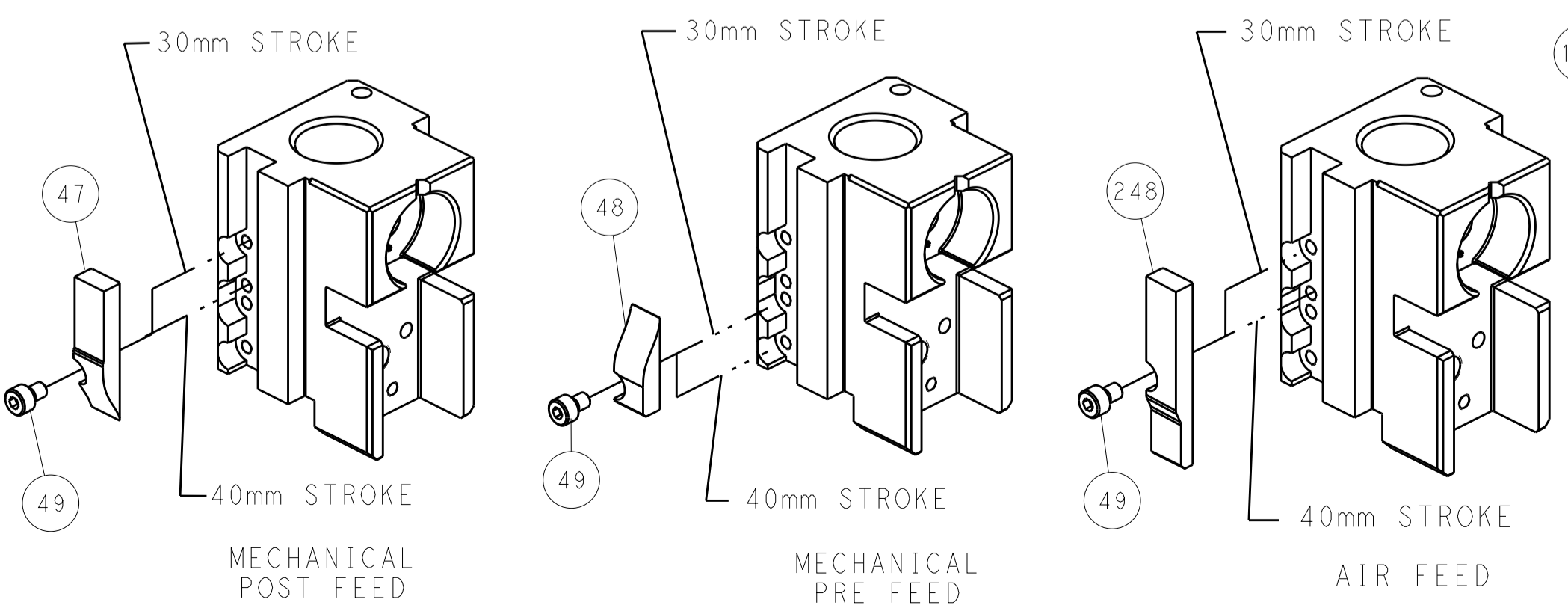
PNEUMATIC



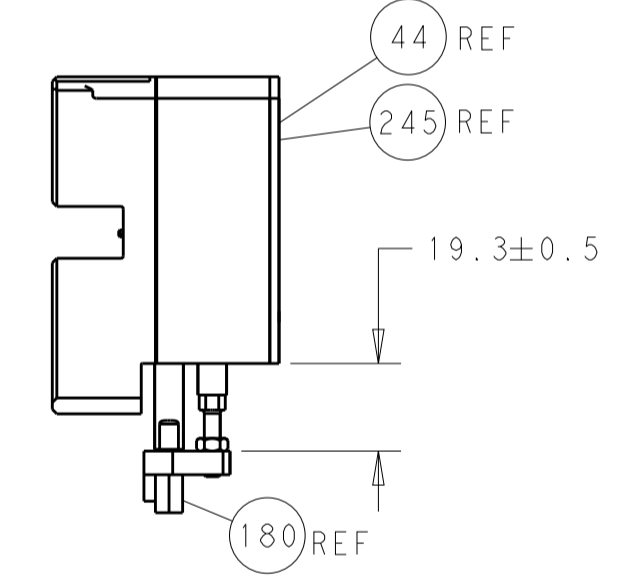
SERVO LATCH PLATE



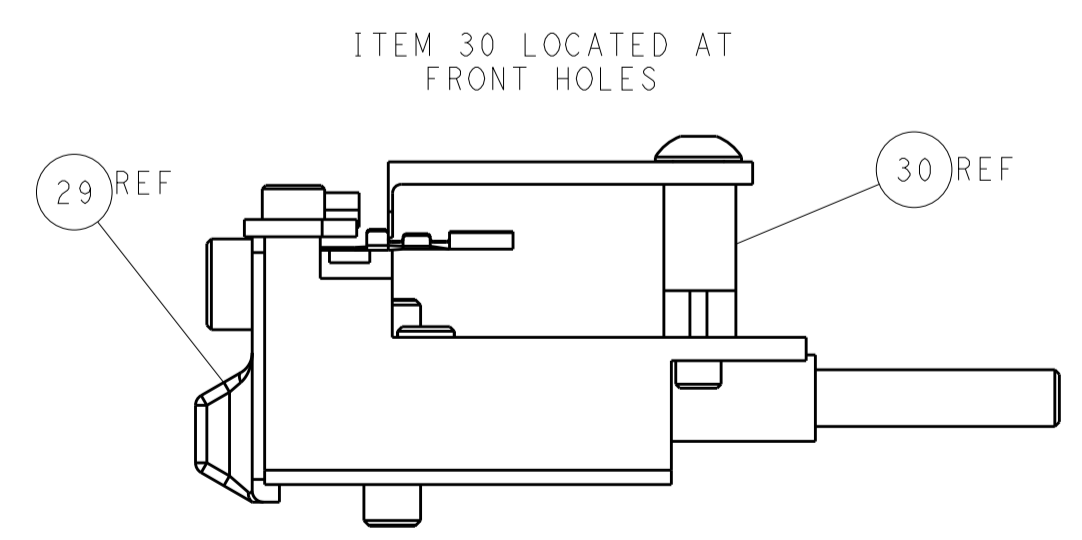
CAM POSITIONS



TERMINAL SUPPORT LOCATION



HOLDDOWN SET-UP



FEED TRACK POSITION GUIDE BY INSULATION BARREL

ATLANTIC VERSION
 Shown on sheets 1 of 4 & 2 of 4
 (Pacific version shown on sheets 3 of 4 & 4 of 4)

DIMENSIONS:		TOLERANCES UNLESS OTHERWISE SPECIFIED:		DWN 17JUN2013		TE Connectivity	
mm	0 PLC ±	1 PLC ±	2 PLC ±	3 PLC ±	4 PLC ±	5 PLC ±	Harrisburg, PA 17105-3608
MATERIAL:	FINISH:	WEIGHT:	SCALE:	APVD 17JUN2013	NAME:	SIZE:	RESTRICTED TO:
			1:2	CHK L. ZHANG	Ocean Side Feed Applicator	A1 00779	Customer Accessible Production Drawing
				APVD H. GUO	PRODUCT SPEC:	CAGE CODE DRAWING NO:	SHEET 2 OF 4
				APVD 17JUN2013	APPLICATION SPEC:	©=2151679	REV B1

PACIFIC VERSION TERMINATOR INTERFACE ADAPTER	PART NUMBER	REVISION	DESCRIPTION	FEED TYPE	APPLICATOR STYLE CONVERSION CHART						
					CONVERT TO	PART NUMBERS REQUIRED					
	2-2151679-1	B	FINE CRIMP HEIGHT ADJUST	MECHANICAL	PNEUMATIC FEED	2119950-1	1338685-1	5-18022-5	2119641-2	2119799-1	2063440-1
					SERVO LATCH PLATE	2119951-1	-	8-2151679-5	1901094-3	1-1752354-8	2168400-6 (QUANTITY 2)
					SMART APPLICATOR	2161326-1	-	8-2151679-4	-	-	-
	2-2151679-2	B	FINE CRIMP HEIGHT ADJUST	PNEUMATIC	MECHANICAL FEED	2119949-1	1338685-1	5-18022-5	2119653-2	-	-
					SERVO LATCH PLATE	2119951-1	-	8-2151679-5	1901094-3	1-1752354-8	2168400-6 (QUANTITY 2)
					SMART APPLICATOR	2161326-1	-	8-2151679-4	-	-	-
	2-2151679-5	B	FINE CRIMP HEIGHT ADJUST	SERVO LATCH PLATE	MECHANICAL FEED	2119949-1	1338685-1	5-18022-5	2119653-2	-	-
					PNEUMATIC FEED	2119950-1	1338685-1	5-18022-5	2119641-2	2119799-1	2063440-1
	2-2151679-7	B	FINE CRIMP HEIGHT ADJUST	NONE	-	-	-	-	-	-	-
	7-2151679-7	A	CRIMP TOOLING KIT	-	-	-	-	-	-	-	-

APPLICATOR DATA		
CRIMP	SIZE	TYPE
WIRE	1.00 mm [.039]	F
INSUL	1.07 mm [.042]	O
APPLICATOR INSTRUCTIONS 408-10389		

TERMINAL DATA: TE TERMINAL		TE CRIMP SPECIFICATION
TERMINAL NAME: CONTACT, FEMALE, UNSEALED, 0.50 SERIES		
WIRE STRIP LENGTH		INSULATION DIAMETER RANGE
3.00-3.50 mm [1.18-.138 IN]		Ø0.85-1.05 mm [.033-.041 IN]
TERMINAL APPLICATION SPECIFICATION	(B)114-5379	-
TERMINALS APPLIED		
TE TERMINAL	TE TERMINAL	TE TERMINAL
(B) 1827855-4		

WIRE SIZE	CRIMP HEIGHT mm [INCH]	CRIMP HEIGHT REFERENCE SETTING
0.22mm2	0.64 +/- 0.02 [.025 +/- .001]	7.1
0.13mm2	0.57 +/- 0.05 [.022 +/- .002]	7.8

- RECOMMENDED SPARE PARTS
- GREASE BEARING SURFACES LIGHTLY
- 3. LUBRICATE DAILY PER THE APPLICATOR INSTRUCTION SHEET SUPPLIED WITH THE APPLICATOR.
- APPLICATOR SPECIFIC DATA TO BE ENTERED INTO BLANK MEMORY CHIP AT ASSEMBLY. SEE BELOW FOR PART NUMBER:
MECHANICAL FEED WITH "SMART APPLICATOR" CONVERSION: 8-2151679-4
PNEUMATIC FEED WITH "SMART APPLICATOR" CONVERSION: 8-2151679-4
SERVO FEED WITH "FINE CRIMP HEIGHT ADJUST": 8-2151679-5
- 5. ADJUSTMENT OF THE STRIPPER MAY BE REQUIRED WHEN MOVING THE APPLICATOR BETWEEN BENCH AND LEADMAKER APPLICATIONS.
- APPLY PART NUMBER 1-23419-5 LOCTITE TO THREADS OF ITEMS 62,180
APPLY PART NUMBER 2-23419-6 LOCTITE TO THREADS OF ITEMS 242.
- GREASE THREADS, GROOVE AND O-RING ON ITEMS 139 & 152.
- MAGNET MUST BE ORIENTED CORRECTLY IN ORDER TO PROPERLY ACTUATE THE COUNTER.
- CRIMP HEIGHT REFERENCE SETTING WAS THE SETTING USED WHEN THE APPLICATOR WAS QUALIFIED AT THE FACTORY. ADJUSTMENT MAY BE NECESSARY WHEN RUNNING APPLICATOR IN THE FIELD.
- SPARE FEED CAM STORAGE LOCATION REFER TO INSTRUCTION SHEET FOR ADDITIONAL INFORMATION.
- TO CONVERT THE APPLICATOR TO A NON-CARRIER CUTTING STYLE, REMOVE ITEM 13 AND ATTACH TO THE LOCATION ON BACK SIDE OF THE HOUSING. REFER TO INSTRUCTION SHEET FOR ADDITIONAL INFORMATION.
- FEED ADJUSTMENT REQUIRED WHEN CHANGING TERMINAL APPLIED.
- TERMINAL LUBRICANT IS RECOMMENDED.

***WARNING**
ON INSTALLATION, SET WIRE DISC, ITEM 40 TO LARGEST WIRE SIZE SETTING. USE OF SETTINGS BELOW MINIMUM REQUIRED CRIMP HEIGHT SETTING WILL CAUSE DAMAGE TO CRIMP TOOLING.

-	1	1	1	1	2119782-1	FINE ADJUST HEAD ASM, PACIFIC STYLE	251
-	-	-	1	-	2119640-1	PUSH ROD, AIR FEED	250
-	-	-	1	-	2079988-1	BUSHING, LCH5-12, MISUMI	249
-	1	1	1	1	1-22279-3	SPRING, COMPRESSION	246
-	1	1	1	1	2119082-8	CAM, SNAIL, INSULATION ADJUSTMENT	244
-	1	1	1	1	2079764-1	WASHER, WAVE SPRING, CREST-TO-CREST	243
-	1	1	1	1	2119083-1	RETAINER, INSULATION DIAL	242
-	1	1	1	1	7-18023-7	SCR, SKT HD CAP M3 X 4.0	241
-	-	2	-	-	2168400-6	SHCS, LOW HEAD, RoHS, M5 X 16	240
-77	-27	-25	-22	-21	PART NO	DESCRIPTION	ITEM NO

PACIFIC VERSION
Shown on sheets 3 of 4 & 4 of 4
(Atlantic version shown on sheets 1 of 4 & 2 of 4)

SET UP GAUGE	LOC	DIST	REVISIONS					
2119599-1	A	66	P	LTN	DESCRIPTION	DATE	OWN	APVD
			-	-	SEE SHEET 1	-	-	-

-	-	-	-	1	2119580-1	MECHANICAL FEED ASSEMBLY	239
-	-	-	1	-	2063440-1	AIR FEED MODULE	238
-	2	2	2	2	1-2079383-0	SCR, BHSC, RoHS (M3 X 6)	230
-	-	1	-	-	2119740-2	TAG, IDENTIFICATION	213
-	-	1	-	-	1901094-3	SPACER, FEEDER	198
-	1	1	1	1	1-1752354-8	STANDOFF, HOLD-DOWN	180
-	1	1	1	1	1976053-9	LOCATER BLOCK, TERMINAL	179
-	1	1	1	1	993111-1	PIN, SLOTTED SPRING 3.0 X 20.0	177
-	1	1	1	1	8-22280-7	SPRING, COMPRESSION	176
-	1	1	1	1	1752353-2	GUIDE PIN, HOLDDOWN	175
-	1	1	1	1	1901680-2	GUIDE PIN, HOLDDOWN	174
-	-	-	2	-	21045-3	RING, RETAIN, EXTERN, 3/16 CRESCENT	172
-	1	1	1	1	994969-1	MAGNET, RARE EARTH HIGH ENERGY	166
-	REF	REF	REF	REF	994970-2	COUNTER, MAGNETIC	164
-	-	-	1	-	240638-1	SPRING, FEED FINGER	163
-	1	1	1	1	8-21084-1	O-RING, .801 ID, .070 DIA. MAT.	152
-	-	-	1	-	2119641-2	FEED CAM, AIR FEED	151
-	1	1	1	1	2119798-2	DETENT PIN	145
-	1	1	1	1	2079383-8	SCR, BHSC, RoHS (M4 X 16)	144
-	4	4	4	4	2168400-5	SHCS, LOW HEAD, RoHS, M4 X 20	143
-	-	-	-	1	2119653-2	FEED CAM, POST FEED	142
-	1	1	1	1	1-2119656-0	APPLICATOR BASIC ASSEMBLY, SF	141
-	1	1	1	1	2119650-1	RAM, ASIAN STYLE, SIDE FEED	140
-	1	1	1	1	2119092-2	BOLT, ADJUSTMENT	139
-	-	-	1	-	3-23627-7	PIN, RETAIN, GRVD, 3/16 X .854	137
-	-	-	1	-	2119799-1	HOLDER, FEED FINGER, AF	136
-	-	REF	-	-	SEE NOTE 4	MEMORY CHIP, PROGRAMMED	135
-	-	1	-	-	1633743-1	SERVO FEED LATCH ASM	133
-	1	1	1	1	1-18028-2	WASHER, FLAT, REG M4	119
-	-	REF	-	-	2119944-1	FEED FINGER ASSEMBLY, SF	117
-	1	1	1	1	2119955-1	ASSY, LUBRICATOR, SIDE FEED	113
-	1	1	1	1	455888-8	SPACER, CRIMPER	82
-	1	1	1	1	5-547505-2	SPRING, COMPRESSION	77
-	1	1	1	1	854769-4	HOLDER, INS	74
-	1	1	1	1	2119956-1	DOCUMENTATION PACKAGE	71
-	1	-	1	1	2119740-1	TAG, IDENTIFICATION	67
-	2	2	2	2	2168078-1	SCREW, DRIVE, RH, RoHS, 2 x .188	66
-	1	1	1	1	2119793-1	LIMITER, ADJUSTMENT BOLT	63
-	3	3	3	3	992763-5	SCR, SET, SOC, CONE POINT, M3 x 4.0	62
-	-	-	1	1	5-18022-5	SCR, HEX HD CAP, M4 X 6.0	59
-	1	1	1	1	21028-2	PIN, SLOTTED SPRING .062 X .250	58
-	-	-	1	1	1338685-1	PAWL, FEED	56
-	1	1	1	1	1-5018030-0	NUT, HEX, REG, RoHS, M3.5	52
-	1	1	1	1	1901681-4	HOLDDOWN, TERMINAL	51
-	-	-	1	2	18023-9	SCR, SKT HD CAP M4 X 6.0	49
-	-	-	-	1	2119652-1	FEED CAM, PRE FEED	48
-	1	1	1	1	2079383-7	SCR, BHSC, RoHS (M8 X 25)	41
-	1	1	1	1	2119645-1	DISC, NUMBERED FA WIRE ADJUSTMENT	40
-	1	1	1	1	2119957-1	APPLICATOR SHIM PACK	39
-	1	1	1	1	1-2119644-4	RAM WASHER, PRECISION	38
-	1	1	1	1	1-1752356-6	SUPPORT, TERMINAL	34
-	2	2	2	2	2079383-5	SCR, BHSC, RoHS (M4 X 20)	33
-	1	1	1	1	2161328-1	HEX HEAD, FLANGED, M5 x 8mm LONG	32
-	1	1	1	1	1320908-2	SPACER, STRIP GUIDE	30
-	1	1	1	1	2119959-1	ASSEMBLY, STRIP GUIDE	29
-	1	1	1	1	455888-3	SPACER, CRIMPER	28
-	1	1	1	1	1320928-2	STRIP GUIDE	24
-	1	1	1	1	2168083-2	SCR, SKT HD CAP, RoHS, M4 X 8.0	21
-	1	1	1	1	1-18028-2	WASHER, FLAT, REG M4	20
-	1	1	1	1	2119533-1	STRIPPER, SIDE FEED	19
-	1	1	1	1	2119806-1	INSERT, SHEAR	13
-	1	1	1	1	3-22280-3	SPRING, COMPRESSION	12
-	1	1	1	1	1-356885-4	STOP, SHEAR	11
-	1	1	1	1	2119805-1	SHEAR HOLDER, FRONT	10
-	1	1	1	1	1633861-1	SHEAR, FLOATING	9
-	1	1	1	1	3-1633711-1	ANVIL, COMBINATION	8
-	-	-	-	-	-	-	7
-	-	-	-	-	-	-	6
-	1	1	1	1	2119780-9	DEPRESSOR, SHEAR	5
-	1	1	1	1	3-238011-8	BLOCK, CRIMPER SPACER	4
-	1	1	1	1	1633966-3	CRIMPER, INSULATION O	3
-	-	-	-	-	-	-	2
-	1	1	1	1	3-1633713-7	CRIMPER, WIRE PREMIUM	1
-77	-27	-25	-22	-21	PART NO	DESCRIPTION	ITEM NO

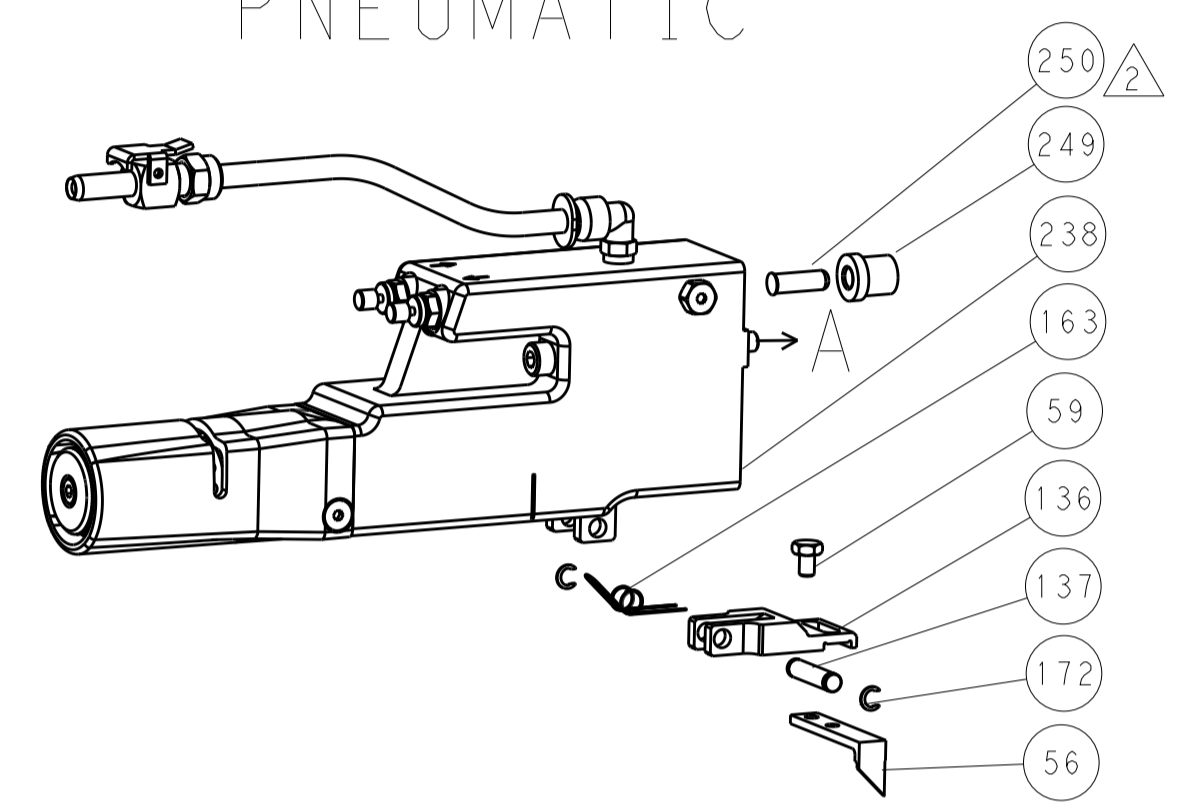
DIMENSIONS:		TOLERANCES UNLESS OTHERWISE SPECIFIED:		DATE		NAME	
mm	0 PLC ±	1 PLC ±	2 PLC ±	3 PLC ±	4 PLC ±	5 PLC ±	ANGLES ±
MATERIAL:				FINISH:	WEIGHT:	SCALE:	RESTRICTED TO:
Customer Accessible Production Drawing				SCALE: 1:2	SHEET 3 OF 4	REV: B1	

LOC		DIST		REVISIONS			
A	66	P	LTM	DESCRIPTION	DATE	OWN	APVD
		-	-	SEE SHEET 1	-	-	-

FEED TYPE MECHANICAL



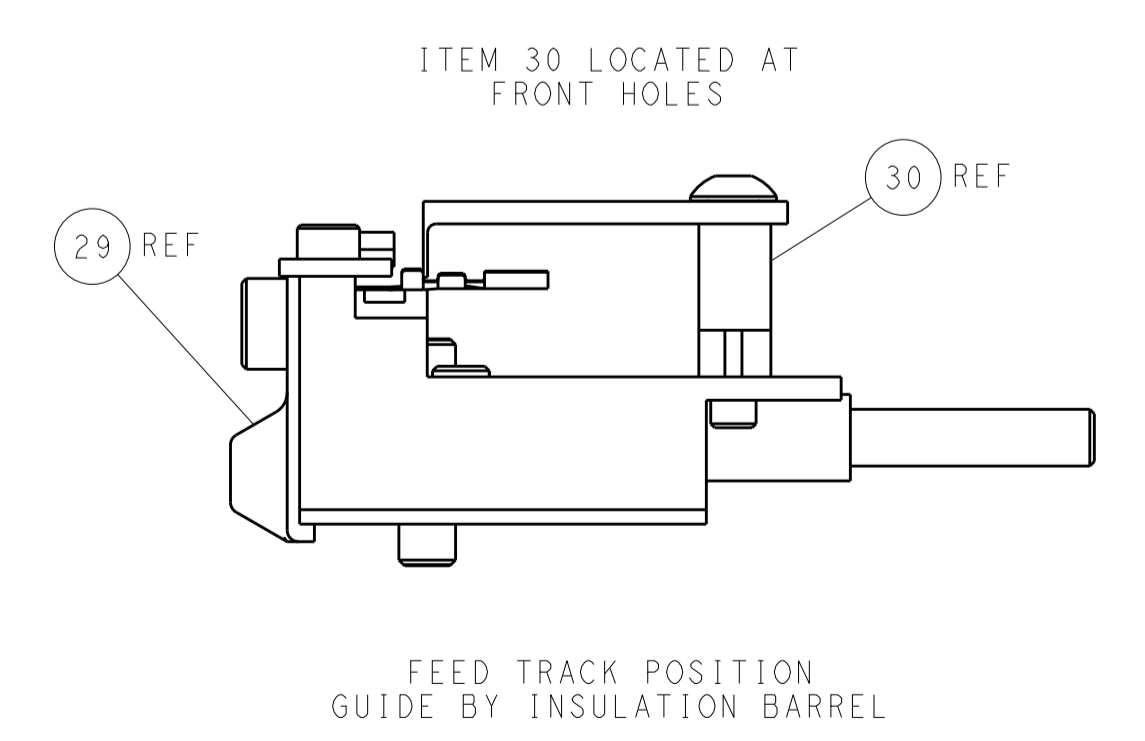
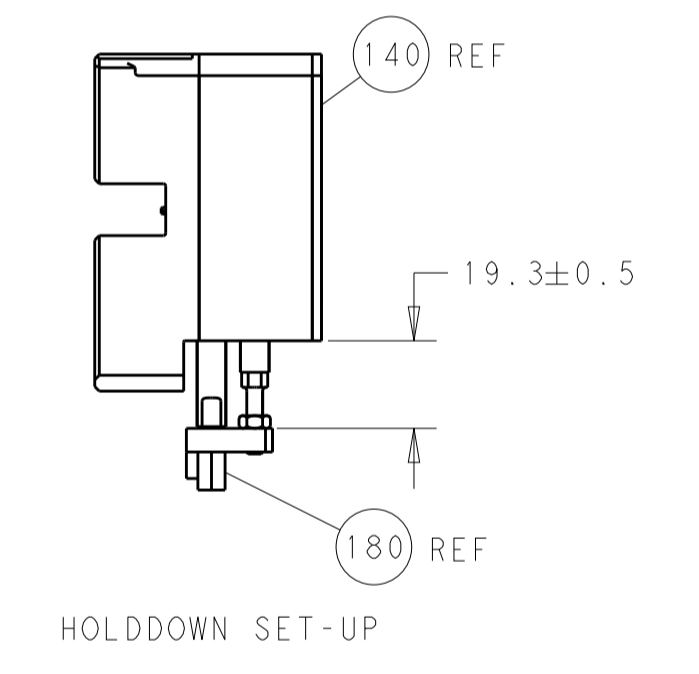
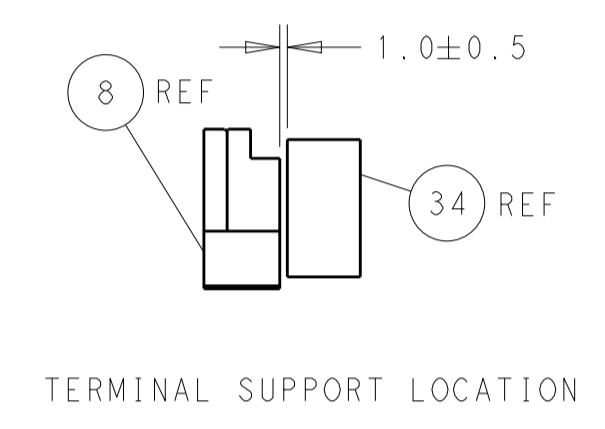
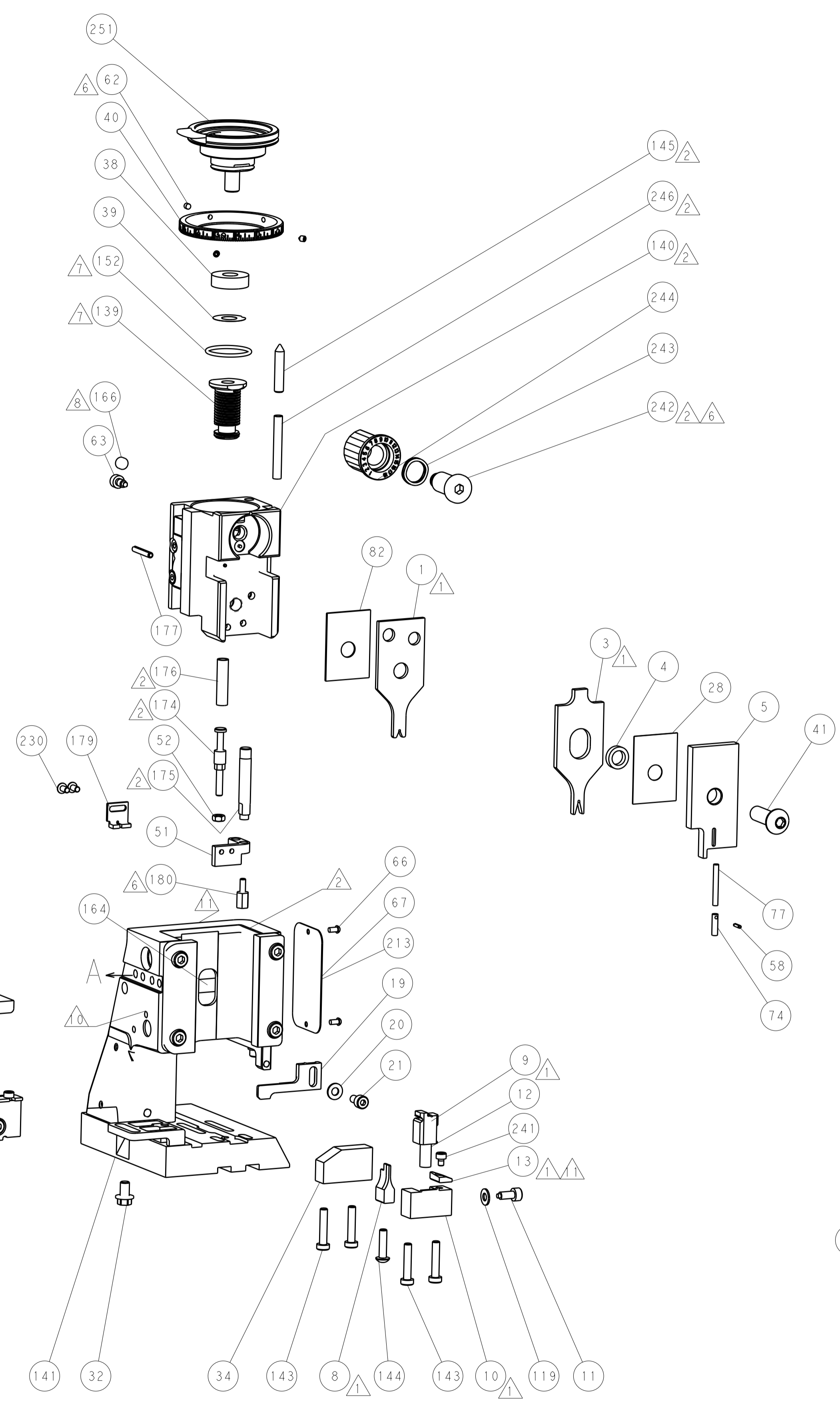
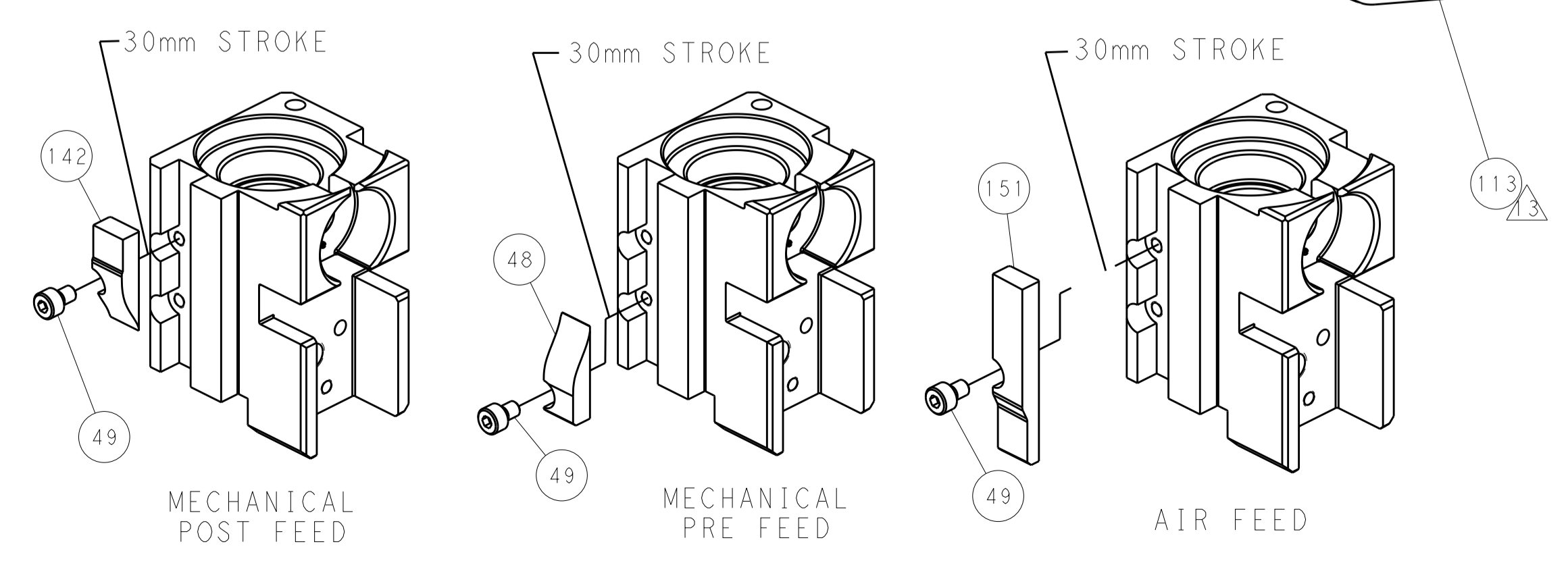
PNEUMATIC



SERVO LATCH PLATE



CAM POSITIONS



PACIFIC VERSION
 Shown on sheets 3 of 4 & 4 of 4
 (Atlantic version shown on sheets 1 of 4 & 2 of 4)

DIMENSIONS:		TOLERANCES UNLESS OTHERWISE SPECIFIED:		DWN: R. HUANG 17JUN2013		TE Connectivity	
mm	0 PLC ±	1 PLC ±	2 PLC ±	3 PLC ±	4 PLC ±	5 PLC ±	Harrisburg, PA 17105-3608
MATERIAL:		FINISH:		CHK: L. ZHANG 17JUN2013		NAME: Ocean Side Feed Applicator	
				APVD: H. GUO 17JUN2013		RESTRICTED TO:	
				PRODUCT SPEC:		SIZE: CAGE CODE: DRAWING NO:	
				APPLICATION SPEC:		A1 00779 ©=2151679	
				WEIGHT:		SCALE: 1:2 SHEET 4 OF 4 REV: B1	
				Customer Accessible Production Drawing		SHEETS 1 & 2 ARE NOT REQUIRED FOR PACIFIC VERSION	