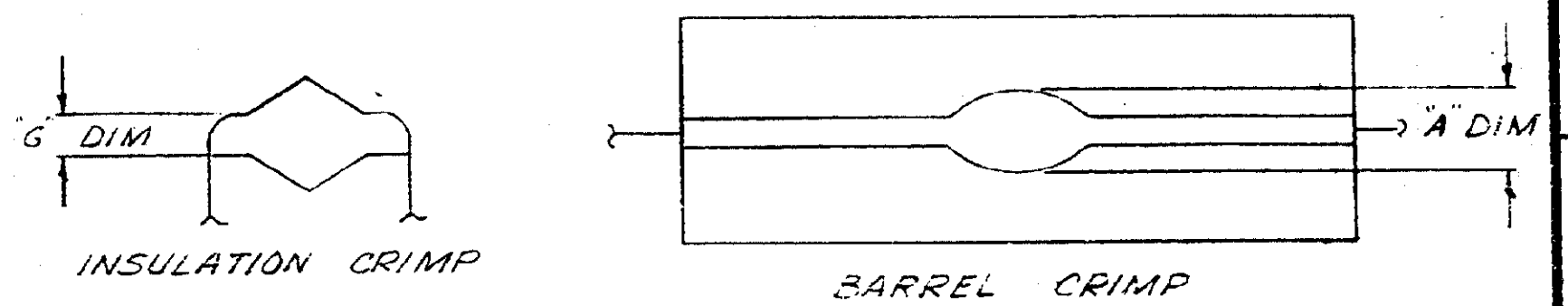
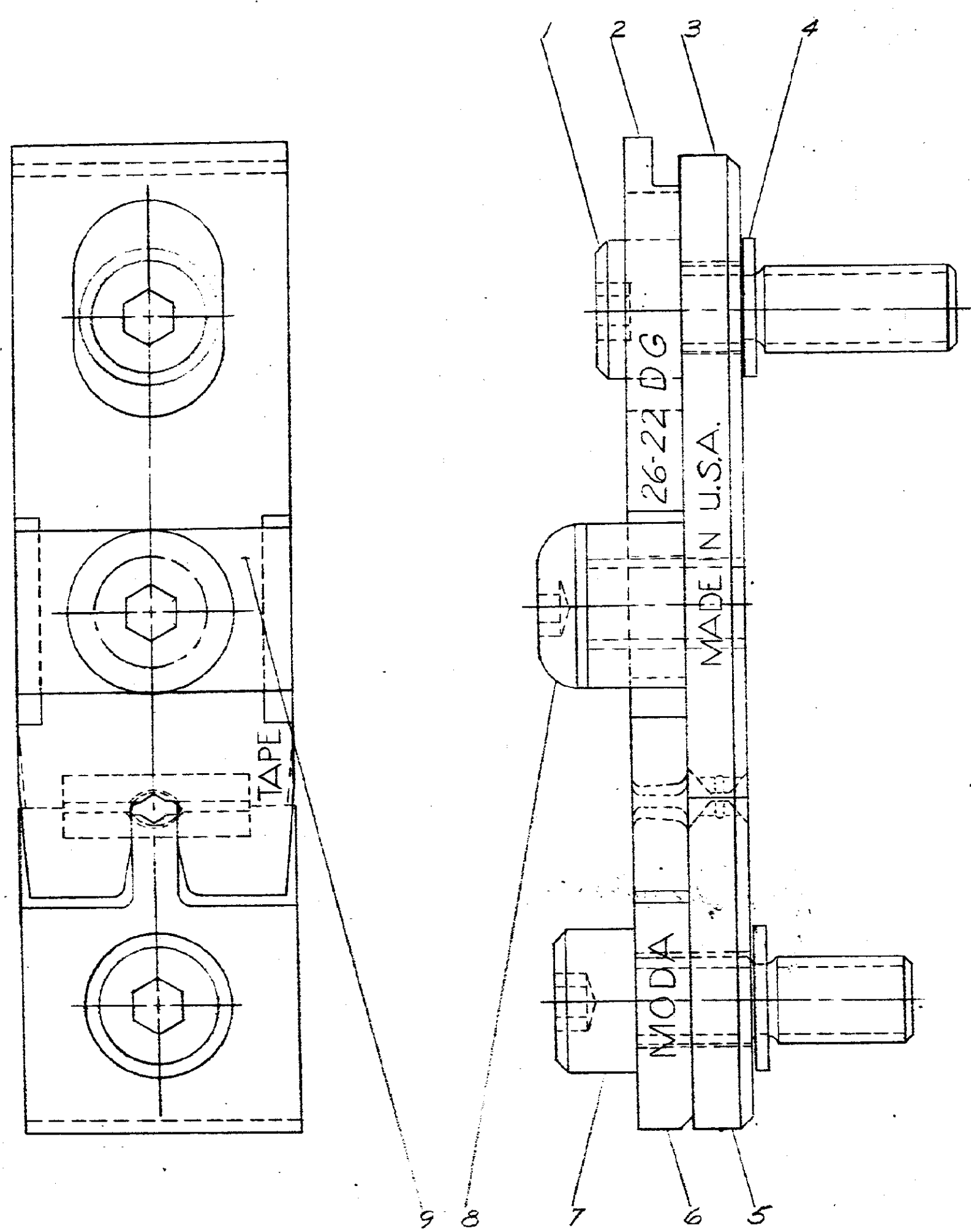


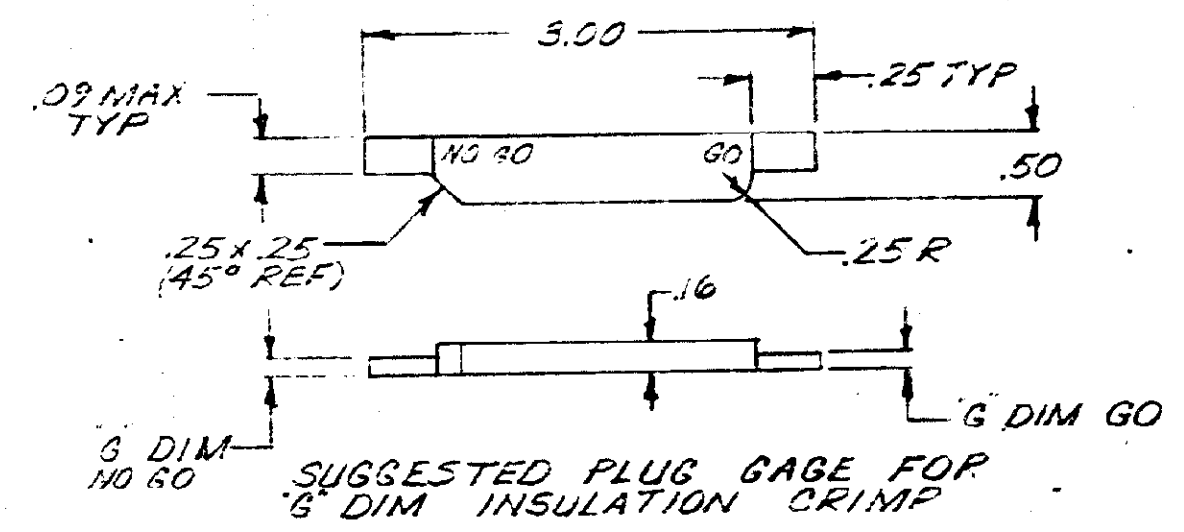
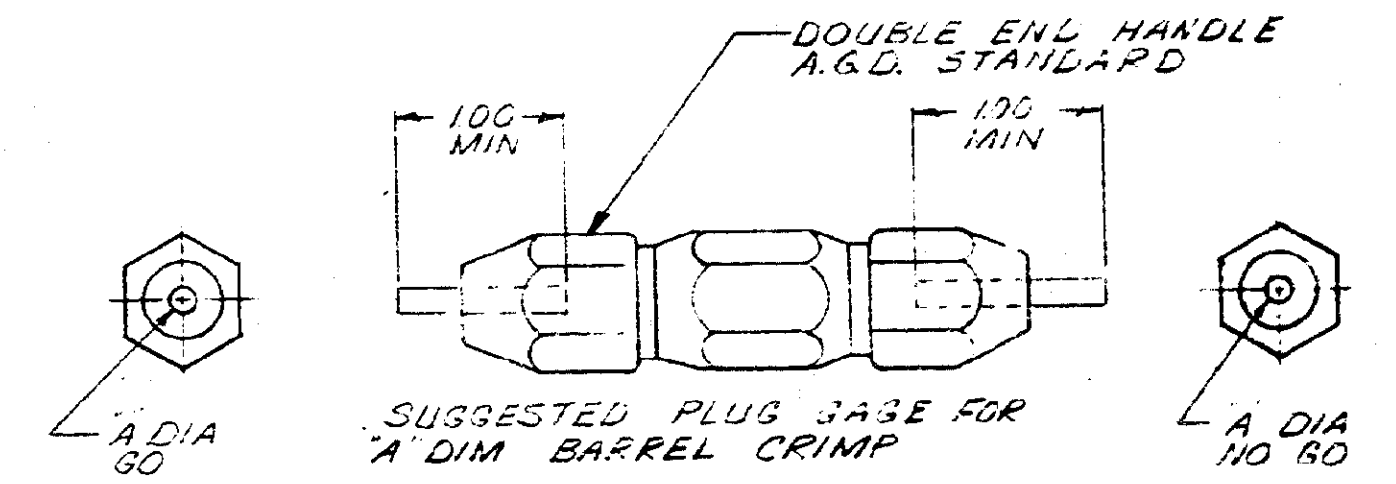
NUMBER 69902

PLUG GAGE DIMENSIONS APPLY WITH TOOL 15
 BOTTOMED BUT NOT UNDER PRESSURE.



ENLARGED VIEW OF CRIMPS

G DIM AT P35#1		A DIM	
GO	NO GO	GO	NO GO
.015	.035	.044	.055



SUPERSEDED BY 15-2423

1	307275-5	SADDLE	9
1	59577-6	SCREW (10-32 UNF-3A X .350 LONG)	8
1	2-59781-1	SCREW-SPECIAL	7
1	3-59619-4	ANVIL-INSULATION	6
1	307213-4	INSET-BARREL-LOWER	5
2	1-21046-3	RING-RETAINING	4
1	307212-4	INSERT-BARREL-UPPER	3
1	1-307285-0	INDENTER-INSULATION	2
1	59781-3	SCREW	1

NUMBER	NAME	REMARKS	ITEM NO.
REQUIRED PER ASSEMBLY			
©1969 BY AMP INCORPORATED. ALL RIGHTS RESERVED. AMP PRODUCTS COVERED BY PATENTS AND/OR PATENTS PENDING.			
MATERIAL AND FINISH		CUSTOMER COPY REFERENCE ONLY	
DR. B. Shenfeld 12-11-69		AMP INCORPORATED HARRISBURG, PENNA.	
DATE 12-16-69		USED ON 69875	
DR. R. J. [Signature]		WIRE - RANGE - INSULATION TYPE CROSS CRIMP DG	
DATE 12-16-69		TOLERANCE EXCEPT AS NOTED = .015	
DR. R. J. [Signature]		SCALE 4-1	
NAME		LOC M C	
DIE ASSEMBLY MODA		REV A1	

DIMENSIONS IN INCHES. DO NOT SCALE PRINT.

REV	DATE	BY	CHKD	DESCRIPTION
1	12-16-69	R. J. [Signature]		REVISION RECORD
2	12-16-69	R. J. [Signature]		REVISION RECORD

AMP 15-2423 REV 7/67