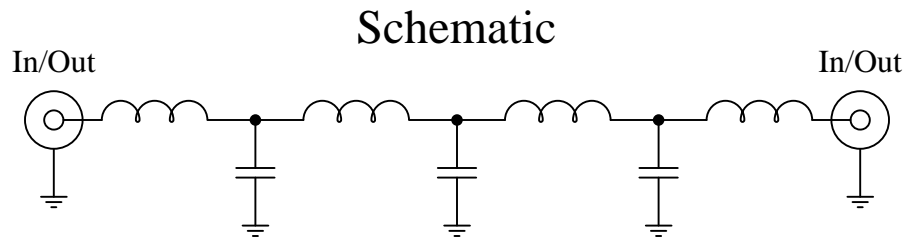


Part Number: CLPFL-1400

Low Pass Range  
DC to 1400MHz

**New**  
**Low Pass Filters**



### Features:

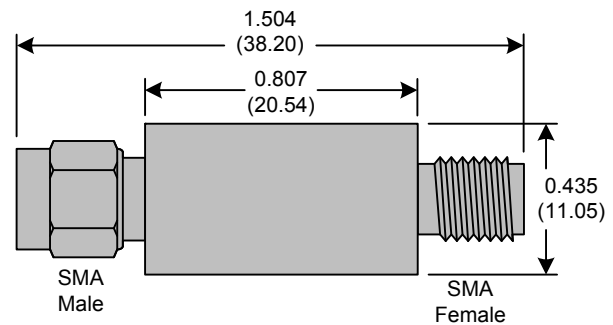
- 7<sup>th</sup> Order Butterworth Response
- 50Ω SMA Connectors

### Applications:

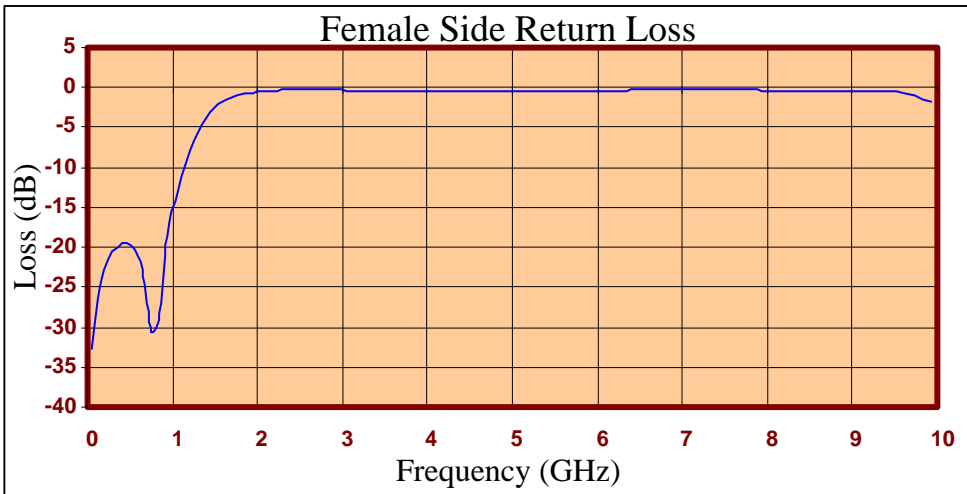
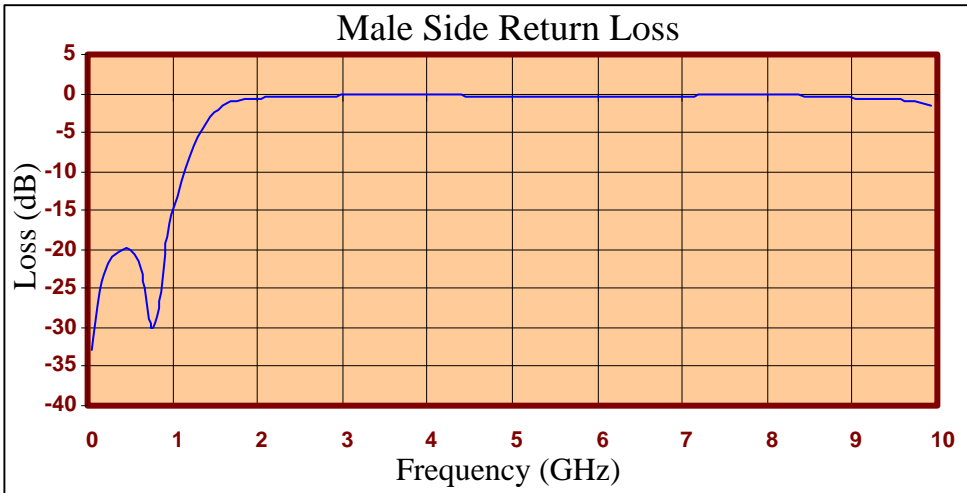
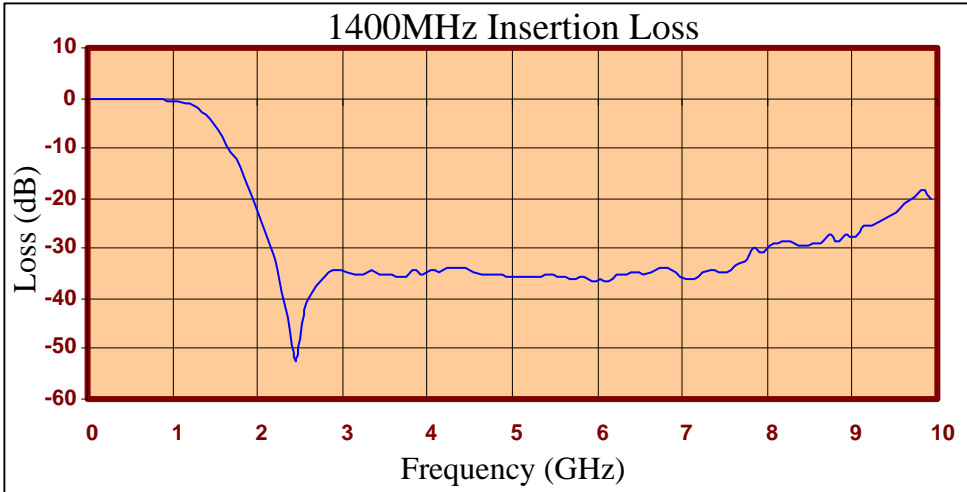
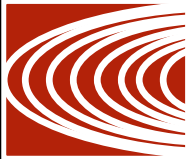
- Test Equipment
- Lab Use

### Maximum Ratings:

- +36dBm (4 Watts)
- Operating Temperature: -40°C to 85°C
- Storage Temperature: -55°C to 100°C



Crystek's new line of Low Pass Filters are designed in a rugged SMA housing. This filter line has excellent out-of-band rejection. Designed for Test Equipment and General Lab Use.





FREQ (MHz)	INSERTION LOSS (dB)	Male Return Loss (dB)	Female Return Loss (dB)
50.000	-0.05	-32.92	-32.82
249.500	-0.15	-21.78	-21.56
449.000	-0.21	-19.87	-19.48
648.500	-0.24	-23.26	-22.81
848.000	-0.33	-27.42	-29.04
947.750	-0.44	-18.49	-18.67
1047.500	-0.63	-13.30	-13.30
1247.000	-1.50	-6.81	-6.80
1446.500	-4.10	-3.06	-3.17
1546.250	-6.28	-1.98	-2.13
1646.000	-9.47	-1.32	-1.47
1845.500	-16.35	-0.75	-0.83
2045.000	-24.49	-0.59	-0.54
2244.500	-34.27	-0.48	-0.37
2444.000	-52.38	-0.40	-0.30
2643.500	-38.60	-0.34	-0.27
3042.500	-34.73	-0.26	-0.34
3345.750	-34.44	-0.20	-0.41
3641.000	-35.84	-0.12	-0.46
4040.000	-34.39	-0.13	-0.41
4339.250	-34.07	-0.26	-0.37
4638.500	-34.98	-0.34	-0.39
5037.500	-35.53	-0.38	-0.46
5336.750	-35.43	-0.37	-0.49
5636.000	-35.64	-0.38	-0.47
6035.000	-36.23	-0.38	-0.40
6334.250	-35.32	-0.36	-0.34
6633.500	-34.87	-0.35	-0.28
7032.500	-36.01	-0.29	-0.25
7331.750	-34.38	-0.25	-0.26
7631.000	-33.35	-0.20	-0.30
8030.000	-29.41	-0.19	-0.35
8329.250	-28.82	-0.23	-0.38
8628.500	-28.95	-0.39	-0.38
9027.500	-27.48	-0.59	-0.38
9326.750	-24.34	-0.72	-0.45
9626.000	-21.02	-0.86	-0.74
9925.250	-19.92	-1.43	-1.67

**Product Control:**

Crystek Part Number:	CLPFL-1400	Release Date:	10-Jan-11
Revision Level:	A	Responsible:	K. Piotrowicz

