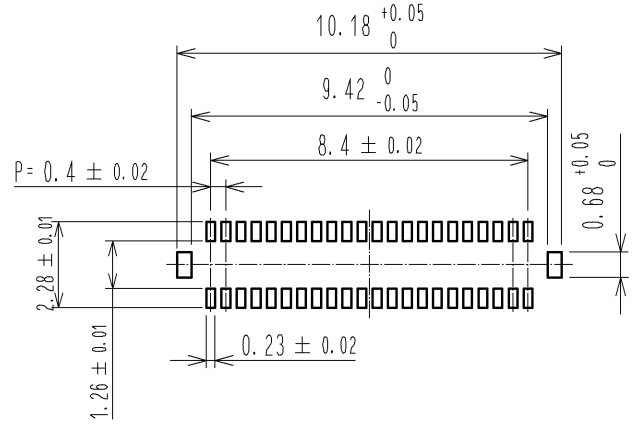
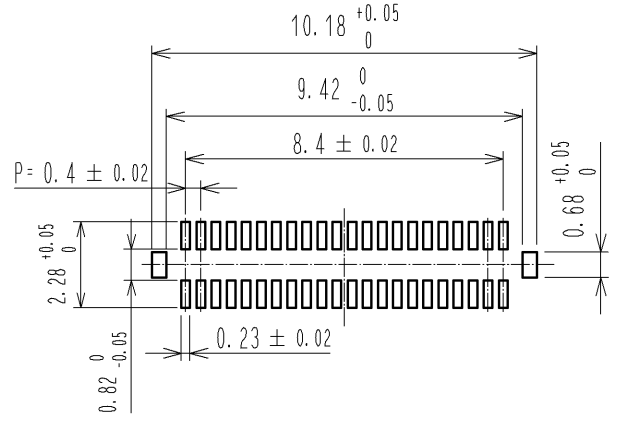


RECOMMENDED METAL MASK
OPENING PATTERN

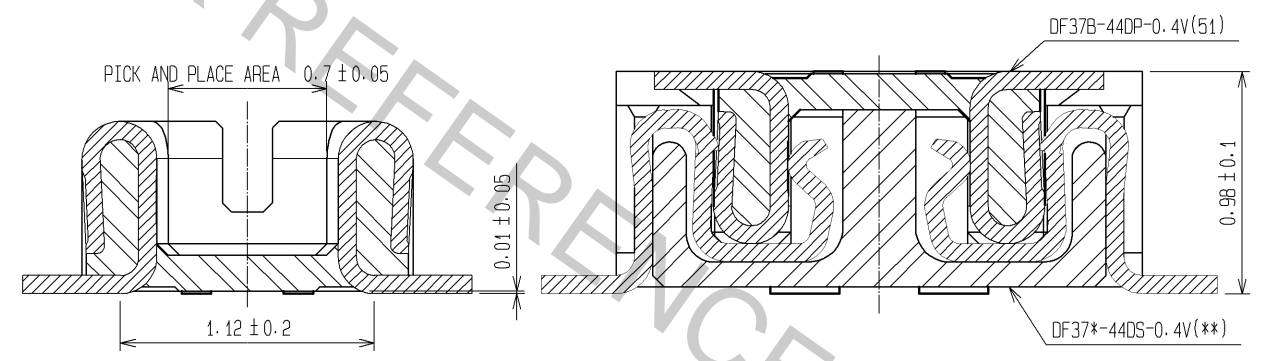


RECOMMENDED SOLDER PASTE THICKNESS: 120#m

RECOMMENDED PATTERN



ENGAGEMENT FIGURE



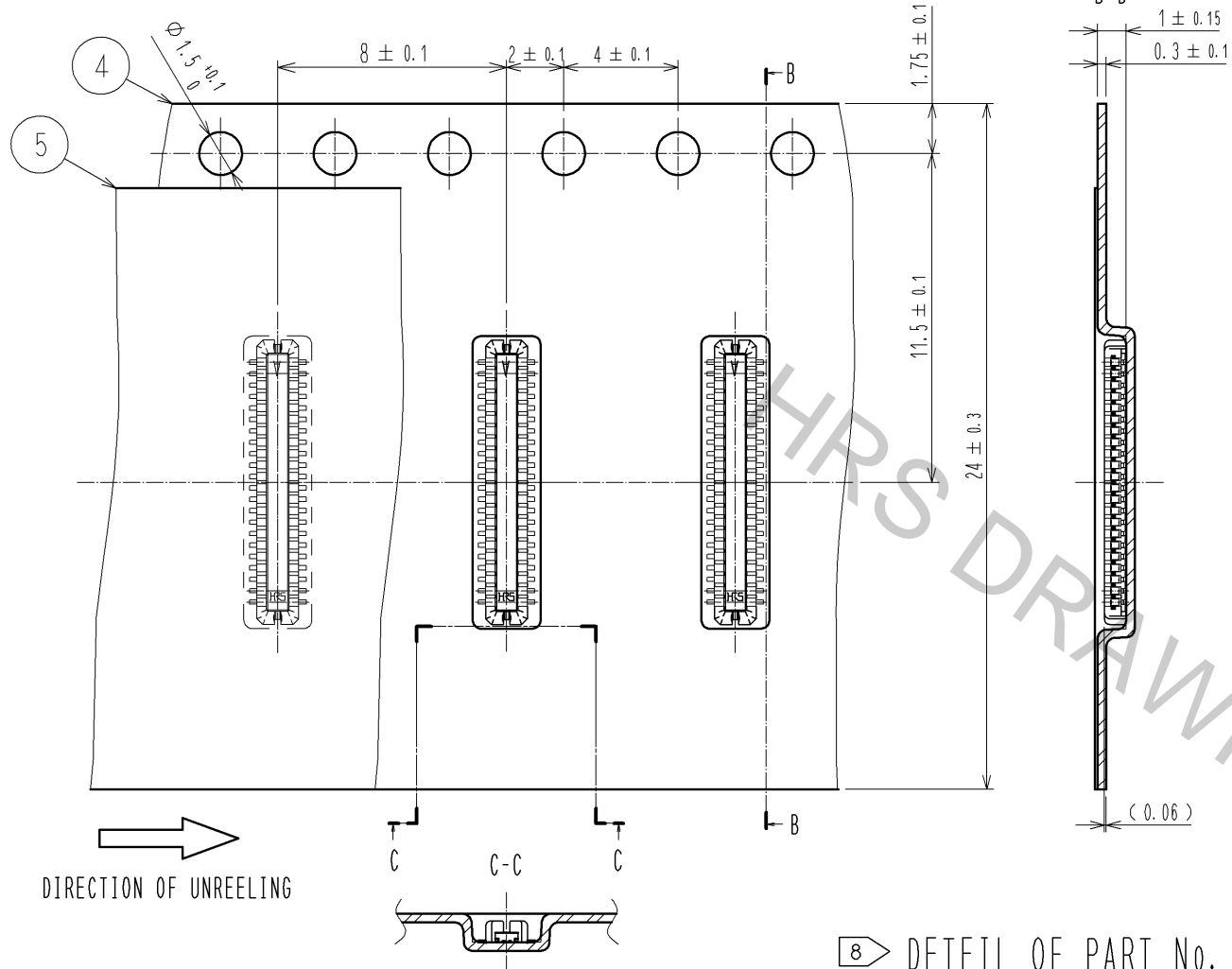
NOTE 1. ALL LEADS CO-PLANARITY SHALL BE 0.1 mm MAX.

- 2 CONTACT PLATING SPECIFICATIONS.
CONTACT AREA : GOLD 0.05 μm MIN
SMT LEAD : GOLD 0.05 μm MIN
UNDER PLATING : NICKEL 1 μm MIN
(SURFACE : SEALING)
- 3 METAL HOLD DOWN PLATING SPECIFICATIONS.
CONTACT AREA : GOLD 0.05 μm MIN
SMT LEAD : GOLD 0.05 μm MIN

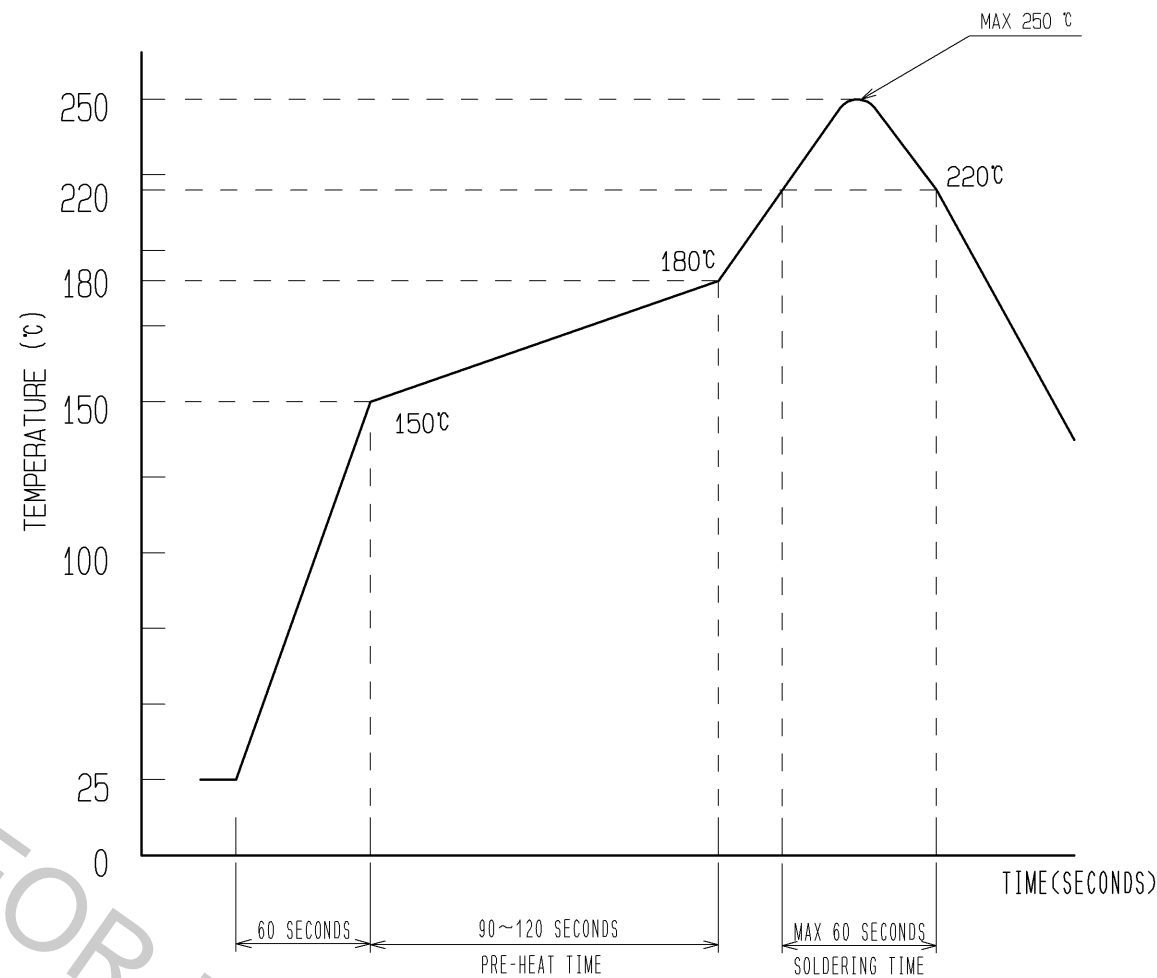
3	PHOSPHOR BRONZE	3	7	PS	CLEAR, REINFORCING COLLAR
2	PHOSPHOR BRONZE	2	6	PS	PLASTIC REEL (BLACK)
1	LCP	UL94V-0, BLACK	5	POLYESTER	CLEAR (TOP COVER TAPE)
			4	PS	CLEAR (EMBOSSED COVER TAPE)
NO.	MATERIAL	FINISH, REMARKS	NO.	MATERIAL	FINISH, REMARKS

UNITS mm		SCALE 10:1	COUNT 	DESCRIPTION OF REVISIONS	DESIGNED	CHECKED	DATE
APPROVED : KH. IKEDA 12.10.03				DRAWING NO. EDC3-320207-01			
CHECKED : TS. MIYAZAKI 12.10.03				PART NO. DF37B-44DP-0.4V(51)			
DESIGNED : RT. SHIMIZU 12.09.27				CODE NO. CL684-3408-0-51			
DRAWN : RT. SHIMIZU 12.09.27							

EMBOSSED CARRIER TAPE PACKAGING (FREE SIZE)



4 RECOMMENDED REFLOW TEMPERATURE PROFILE USING LEAD-FREE SOLDER PASTE.



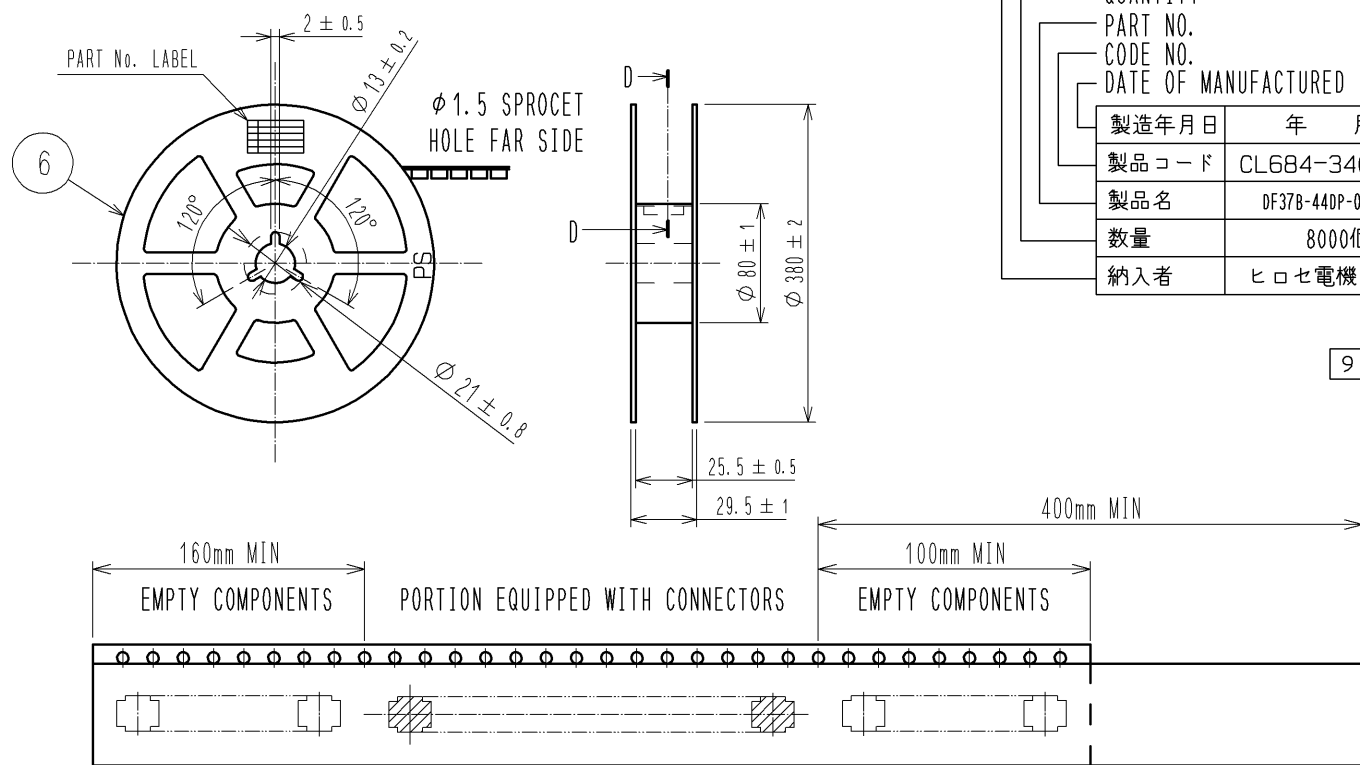
8 DETEIL OF PART No. LABEL

SUPPLIER	QUANTITY	PART NO.	CODE NO.	DATE OF MANUFACTURED
製造年月日	年 月 日	製品コード	CL684-3408-0-51	製品名
DF37B-44DP-0.4V(51)	数量	8000個	納入者	ヒロセ電機(株)

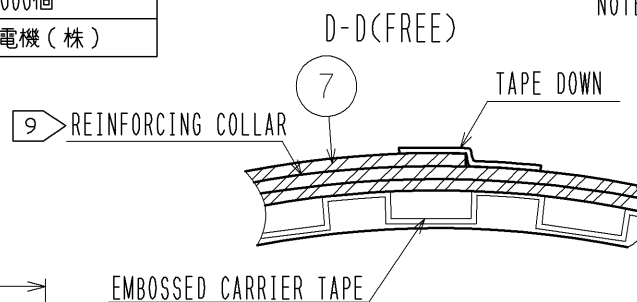
1) REFLOW TIME
 REFLOW METHOD: IR REFLOW
 NUMBER OF REFLOW CYCLES: 2 CYCLES MAX.
 DURATION ABOVE 220 °C. 60 SEC. MAX.
 (PEAK TEMPERATURE: 250°C MAX.)

2) PRE-HEAT TIME
 PRE-HEAT TEMPERATURE(MIN) :150 °C
 PRE-HEAT TEMPERATURE(MAX) :180 °C
 PRE-HEAT TIME : 90~120 sec.

STYLE AND DIMENSION OF REEL (FREE SIZE)



- NOTES
- 4 THIS TEMPERATURE PROFILE IS PER THE CONDITIONS SHOWN ABOVE. ADDITIONAL FACTORS, SUCH AS SOLDER PASTE TYPE, PCB SIZE AND OTHER MOUNTED COMPONENTS COULD AFFECT THE PROFILE. THEREFORE, A THOROUGH EVALUATION OF MOUNTING CONDITION IS REQUIRED PRIOR TO PRODUCTION. TEMPERATURE IS MEASURED AT CONTACT LEAD.
 - 5. PER REEL 8000 CONNECTORS.
 - 6. THE DIMENSIONS IN PARENTHESES ARE FOR REFERENCE.
 - 7 REFER TO JIS C 0806-3 OR IEC 60286-3 (PACKING OF COMPONENTS FOR AUTOMATIC HANDLING)
 - 8 DETAIL OF PART NO. LABEL IS WRITTEN IN JAPANESE.
 - 9 AFTER FINISHING THE REELING, COVER THE SURFACE WITH 2 METERS OF REINFORCING COLLAR AND THE DOWN AT THE END.



HRS	DRAWING NO.	EDC3-320207-01
	PART NO.	DF37B-44DP-0.4V(51)
	CODE NO.	CL684-3408-0-51
		$\triangle 2/2$