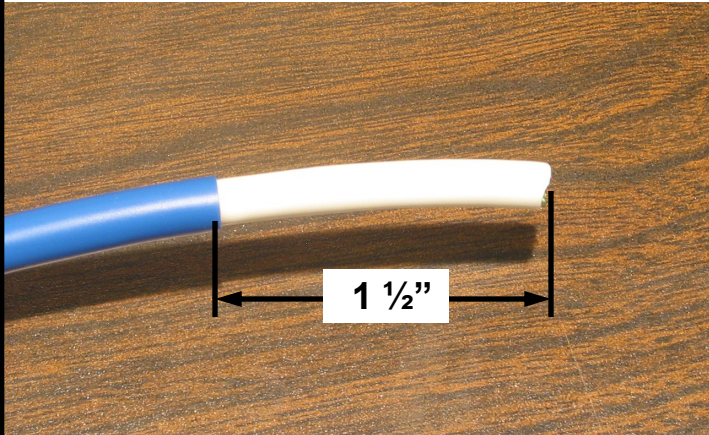


# Bel Stewart Connector

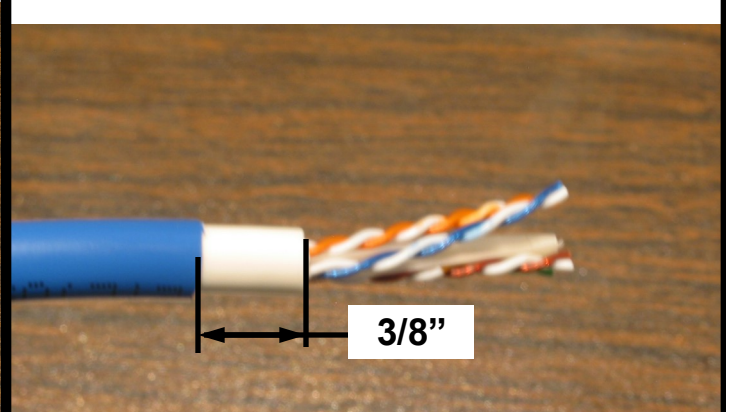
## 39100 Unshielded Category 6A Plug Assembly Instructions

**01**



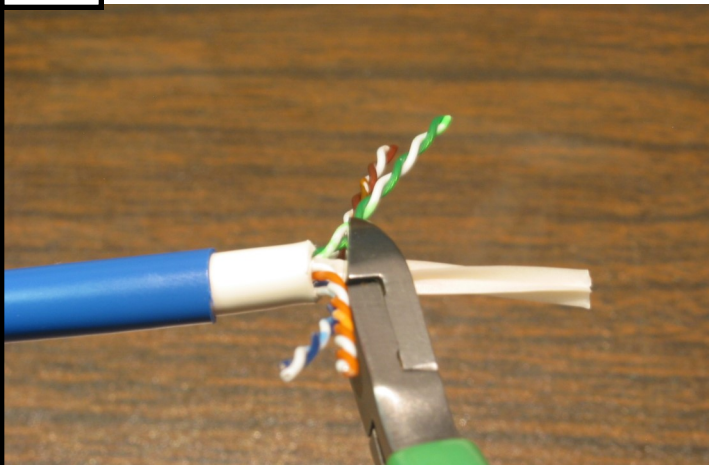
Cut cable to length.  
Strip outer jacket back 1 1/2 inches.

**02**



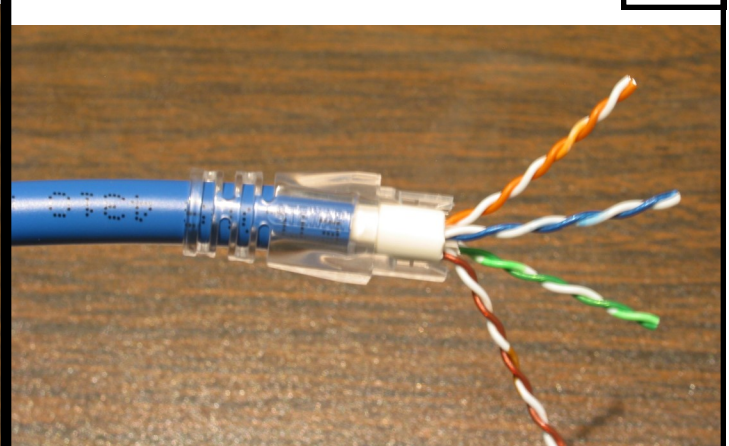
For double jacket cables, strip inner jacket 3/8  
inch from edge of outer jacket.

**03**



Carefully cut away any spline or any filler strips  
from the end of the cable. Cut as close as you  
can to the edge of the jacket without nicking the  
wire insulation.

**04**

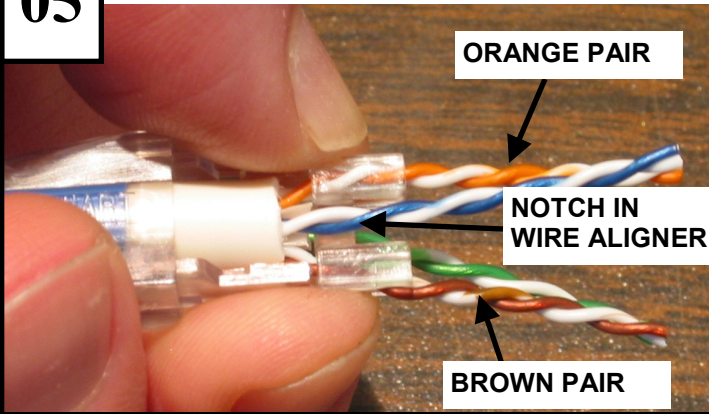


If using a boot, push it over the wires. It will  
stop on the edge of the outer jacket. Rotate  
the boot so the anti-snag is away from you.

# Bel Stewart Connector

## 39100 Unshielded Category 6A Plug Assembly Instructions

**05**

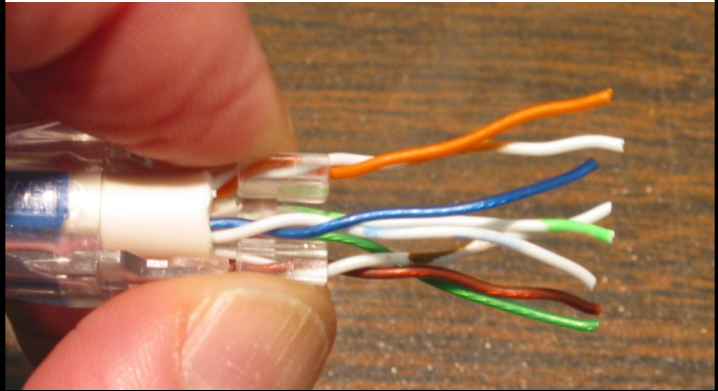


Keep the boot anti-sag toward the rear. Orient the **Orange** pair up and the **Brown** pair down.

Insert the wire aligner so the notch is facing right. The **Blue** and **Green** pairs should straddle the wire aligner in the shallow channels.

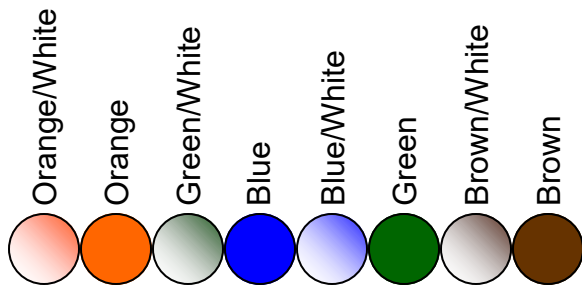
Either the Blue or Green pair may be in front depending on which the end is used.

**06**



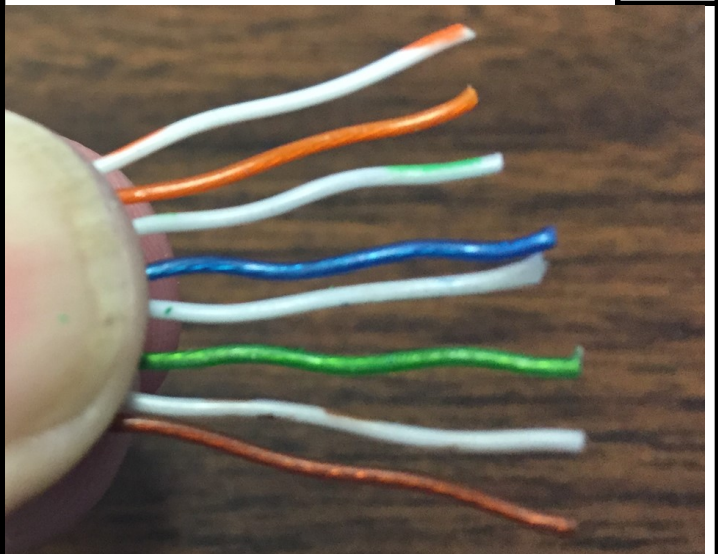
Untwist the wire pairs. Stop untwisting at the edge of the wire aligner.

**07**



Align wires to standard T568B as shown above.

**08**

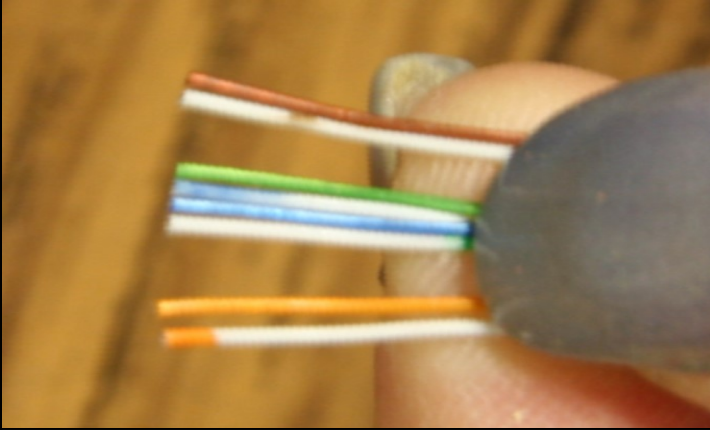


Straighten the wires and arrange them in the proper order.

# Bel Stewart Connector

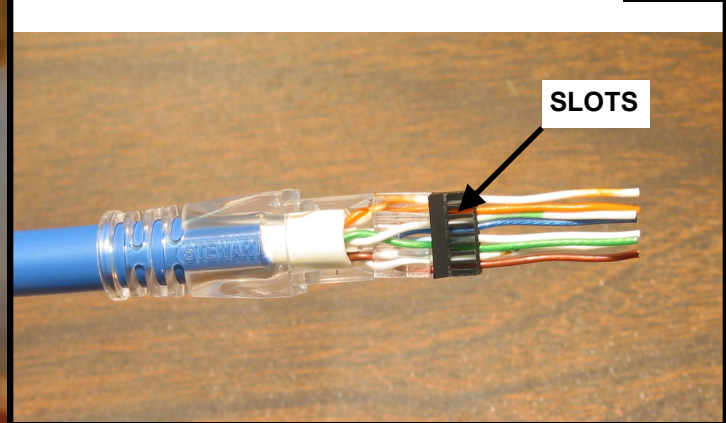
## 39100 Unshielded Category 6A Plug Assembly Instructions

09



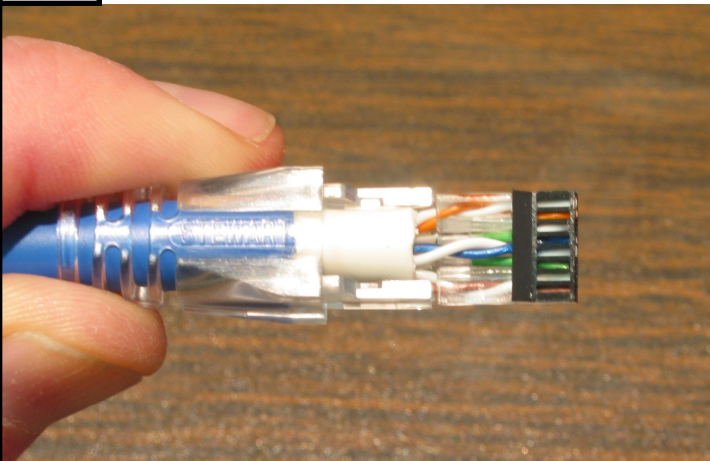
Trim a small amount off of the ends of the wires to that they will be even.

10



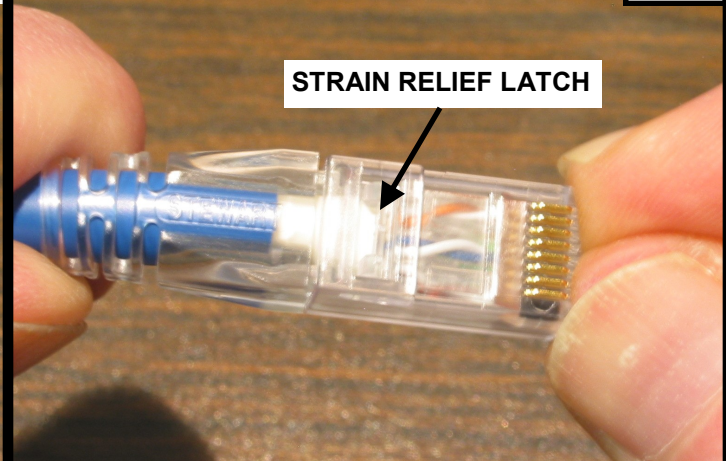
Place the load bar over the wires as shown. The slots should be facing towards you. The load bar should be tight against the wire aligner. If a boot is used, this should also be tight against the aligner.

11



Trim off the excess wires so they are even with the edge of the load bar.

12

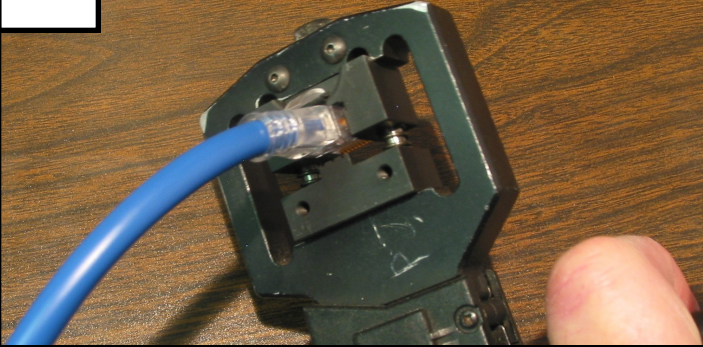


Push the plug body over the load bar, aligner and boot (if used). The jacket should extend under the strain relief latch and load bar should be tight against the front of the plug body.

# Bel Stewart Connector

## 39100 Unshielded Category 6A Plug Assembly Instructions

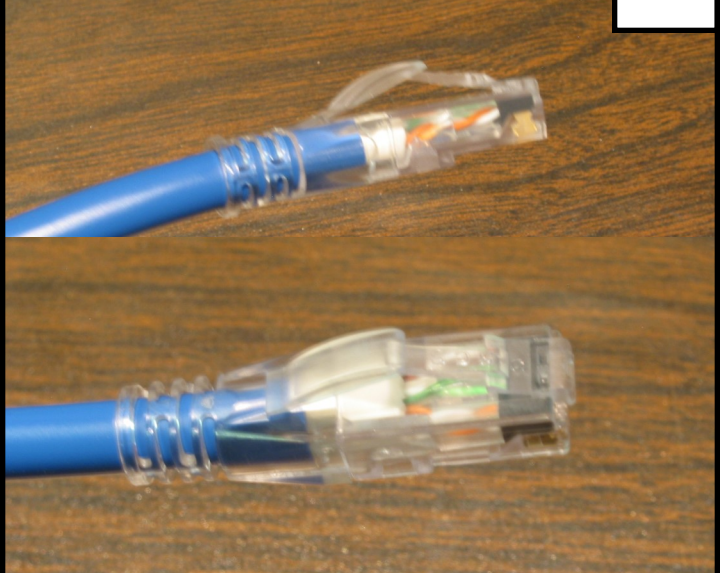
13



Insert the plug assembly into the crimp tool until it latches. Fully depress the handles to seat the contacts and set the strain relief latch. Crimp tool will open when the termination is complete and pressure is released.

Depress the plug latch to remove the terminated plug from the tool.

14



Inspect the terminated plug. Test the completed cable assembly to assure electrical performance meets your requirements.