

NOTES:

1. MATERIALS: HOUSING - LIQUID CRYSTAL POLYMER (LCP)  
GLASS-FILLED, UL94V-0  
TERMINALS - HIGH PERFORMANCE COPPER ALLOY
2. FINISH: 30μ INCH MIN GOLD IN CONTACT AREA, SELECTIVE MATTE TIN ON PCB TAILS, NICKEL OVERALL.
3. REFER TO MOLEX PCB ROUTING GUIDE AS-76060-990 FOR ANTI PAD AND ROUTING RECOMMENDATIONS.
4. CONNECTORS SUPPLIED WITH A 2-56 UNC-2A SCREW.
5. \*THESE DIMENSIONS REPRESENT THE AREA NEEDED TO ACCOMMODATE CONNECTOR INSERTION AND REPAIR ON THE PC BOARD. THIS IS REFERRED TO AS THE "CONNECTOR KEEP OUT ZONE" AND DOES NOT REPRESENT THE ACTUAL PERIMETER OF THE CONNECTOR. WHEN LAYING OUT A PC BOARD FOR CONNECTORS STACK TOGETHER, USE A 1.9mm PROGRESSION.\*
6. SEE SHEETS 2 & 3 FOR PART NUMBERS AND BOARD RELATIONSHIPS.
7. FOR GROUNDED GUIDE PINS USE  $\phi 3.56 \pm 0.08$  (PTH),  $\phi 3.66$  (DRILL) &  $\phi 6.5$  (PAD).
8. MINIMUM CIRCUIT BOARD THICKNESS: 1.0mm.
9. REFER TO MOLEX PRODUCT SPECIFICATION PS-170540-999  
FOR PERFORMANCE SPECIFICATIONS AND ADDITIONAL PCB INFORMATION.
10. THIS PART CONFORMS TO CLASS B REQUIREMENTS OF  
MOLEX COSMETIC SPEC PS-45499-002.
11. PARTS PACKAGED PER PK-70873-759.

SECTION Z-Z

|  |                                      |  |                      |                                   |                    |   |                               |   |                            |
|--|--------------------------------------|--|----------------------|-----------------------------------|--------------------|---|-------------------------------|---|----------------------------|
| ADD 8 COL P/NS<br>EC NO: UCP2017-0603<br>DRW:DMORGAN 2016/11/07<br>CHKD:TIBARRA 2016/11/07<br>APPR:TELO 2016/12/06 | QUALITY SYMBOLS<br>▽=0<br>▽=0<br>▽=0 | GENERAL TOLERANCES (UNLESS SPECIFIED)                      |                      | DIMENSION STYLE<br><b>MM ONLY</b> |                    | SCALE<br><b>4:1</b>   | DESIGN UNITS<br><b>METRIC</b> | THIRD ANGLE PROJECTION  |                            |
|  |                                      | 4 PLACES ± --- ± ---                                       | 3 PLACES ± --- ± --- | DRAWN BY<br>JB INGHAM             | DATE<br>2010/05/19 | TITLE<br><b>IMPACT 5-PAIR 85-OHM<br/>LEFT GUIDED BACKPLANE<br/>SALES ASSEMBLY DRAWING</b> |                               |   |                            |
|  |                                      | 2 PLACES ± 0.13 ± ---                                      | 1 PLACE ± 0.25 ± --- | CHECKED BY<br>JLAURX              | DATE<br>2010/05/19 | APPROVED BY<br>JLAURX   |                               |   |                            |
|  |                                      | 0 PLACE ± --- ± ---  | ANGULAR ± 2°         | APPROVED BY<br>JLAURX             | DATE<br>2013/05/21 | MATERIAL NO.<br><b>SEE TABLE</b>  |                               | DOCUMENT NO.<br><b>SD-170475-0002</b>   | SHEET NO.<br><b>1 OF 3</b> |
| D2   | REV                                  | DRAFT WHERE APPLICABLE<br>MUST REMAIN<br>WITHIN DIMENSIONS |                      | SIZE<br><b>C</b>                  |                    |   |                               | THIS DRAWING CONTAINS INFORMATION THAT IS PROPRIETARY TO MOLEX.<br>INCORPORATED AND SHOULD NOT BE USED WITHOUT WRITTEN PERMISSION |                            |

# PART NUMBER LOGIC

170475-\*\*\*\*

MODULE TYPE

- 3 = GUIDE LEFT, MATTE TIN
- 7 = GUIDE LEFT END WALL, MATTE TIN

# OF COLUMNS

- 1 = 10 COL
- 2 = 12 COL
- 6 = 16 COL
- 8 = 8 COL

PIN LENGTH (P)

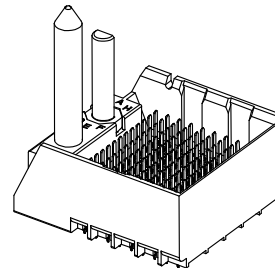
- 3 = 4.50 (SHORT COMPLIANT, 0.46±0.05 PTH)
- 4 = 4.90 (SHORT COMPLIANT, 0.46±0.05 PTH)
- 5 = 5.50 (SHORT COMPLIANT, 0.46±0.05 PTH)
- 6 = 4.50 (MICRO COMPLIANT, 0.39±0.05 PTH)
- 7 = 4.90 (MICRO COMPLIANT, 0.39±0.05 PTH)
- 8 = 5.50 (MICRO COMPLIANT, 0.39±0.05 PTH)

KEY ORIENTATION

- 0 = NO KEY
- 1 = A
- 2 = B
- 3 = C
- 4 = D
- 5 = E
- 6 = F
- 7 = G
- 8 = H

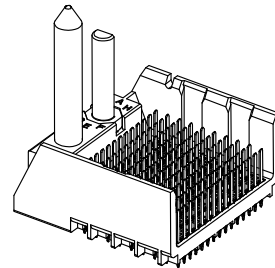
# PART NUMBER CHART

| MATERIAL NUMBER | # OF COLUMNS | # OF DIFF PAIR | DIM "A" | DIM "B" | GUIDE LEFT<br>END WALL<br>OPTION |
|-----------------|--------------|----------------|---------|---------|----------------------------------|
| 170475-78**     | 8            | 40             | 23.1    | 13.30   |                                  |
| 170475-71**     | 10           | 50             | 26.9    | 17.10   |                                  |
| 170475-72**     | 12           | 60             | 30.7    | 20.90   |                                  |
| 170475-76**     | 16           | 80             | 38.3    | 28.50   |                                  |



GUIDE LEFT  
END WALL OPTION

| MATERIAL NUMBER | # OF COLUMNS | # OF DIFF PAIR | DIM "A" | DIM "B" | GUIDE LEFT<br>OPEN WALL<br>OPTION |
|-----------------|--------------|----------------|---------|---------|-----------------------------------|
| 170475-38**     | 8            | 40             | 21.7    | 13.30   |                                   |
| 170475-31**     | 10           | 50             | 25.5    | 17.10   |                                   |
| 170475-32**     | 12           | 60             | 29.3    | 20.90   |                                   |
| 170475-36**     | 16           | 80             | 36.9    | 28.50   |                                   |

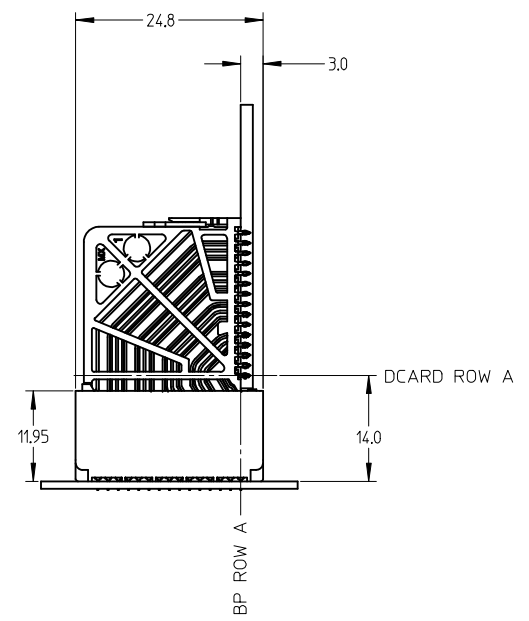
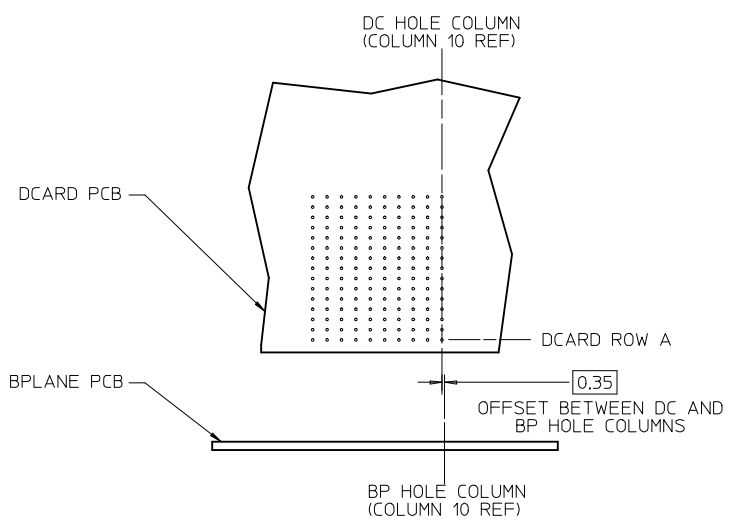
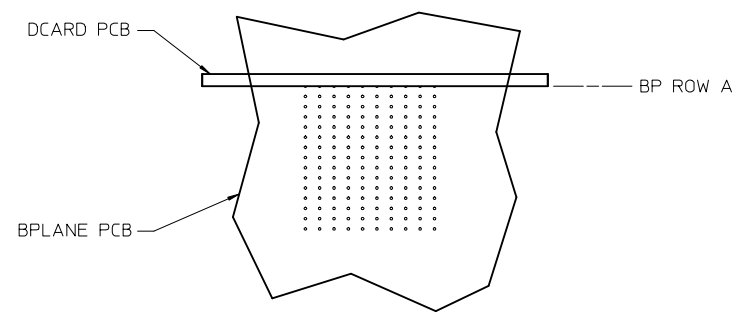


GUIDE LEFT  
OPEN WALL OPTION

|   |                                      |  |                      |                                   |                                |                     |                        |                        |  |
|---|--------------------------------------|--|----------------------|-----------------------------------|--------------------------------|---------------------|------------------------|------------------------|--|
| SEE SHEET 1<br>EC NO: UCP2017-0603<br>DRWNG: MORGAN 2016/11/07<br>CHKD: TIBARRA 2016/11/07<br>APPR: TELO 2016/12/06 | QUALITY SYMBOLS<br>▽=0<br>▽=0<br>▽=0 | GENERAL TOLERANCES (UNLESS SPECIFIED)                |                      | DIMENSION STYLE<br><b>MM ONLY</b> |                                | SCALE<br>1:1        | DESIGN UNITS<br>METRIC | THIRD ANGLE PROJECTION |  |
|   |                                      | 4 PLACES ± --- ± ---                                 | 3 PLACES ± --- ± --- | 2 PLACES ± 0.13 ± ---             | 1 PLACE ± 0.25 ± ---           | 0 PLACE ± --- ± --- | DRAWN BY<br>JB INGHAM  | DATE<br>2010/05/19     | TITLE<br>IMPACT 5-PAIR 85-OHM<br>LEFT GUIDED BACKPLANE<br>SALES ASSEMBLY DRAWING<br><br><b>molex</b> |
|   |                                      | ANGULAR ± 2 °  |                      |                                   |                                |                     | CHECKED BY<br>JLAURX   | DATE<br>2010/05/19     |  |
|   |                                      | DRAFT WHERE APPLICABLE MUST REMAIN WITHIN DIMENSIONS |                      |                                   |                                |                     | APPROVED BY<br>JLAURX  | DATE<br>2013/05/21     |  |
| D2  | REV                                  | SEE TABLE  |                      |                                   | MATERIAL NO.<br>SD-170475-0002 | DOCUMENT NO.        | SHEET NO.<br>2 OF 3    |                        |  |

THIS DRAWING CONTAINS INFORMATION THAT IS PROPRIETARY TO MOLEX INCORPORATED AND SHOULD NOT BE USED WITHOUT WRITTEN PERMISSION

IMPACT 5 PAIR  
BOARD RELATIONSHIPS



|  |                       |                                       |      |  |   |              |  |  |  |  |  |
|--|-----------------------|---------------------------------------|------|--|---|--------------|--|--|--|--|--|
| SEE SHEET 1<br>EC NO: UCP2017-0603<br>DRWNG:MORGAN 2016/11/07<br>CHKD:TIBARRA 2016/11/07<br>APPR:TELO 2016/12/06 | QUALITY SYMBOLS       | GENERAL TOLERANCES (UNLESS SPECIFIED) |      | DIMENSION STYLE                                      | SCALE   | DESIGN UNITS | THIRD ANGLE PROJECTION   |  |  |  |  |
|  | ▽=0                   | mm                                    | INCH | MM ONLY  | 3:1   | METRIC       |  |  |  |  |  |
|  | ▽=0                   | 4 PLACES ± --- ± ---                  |      |  | DRAWN BY  | DATE         | TITLE<br>IMPACT 5-PAIR 85-OHM<br>LEFT GUIDED BACKPLANE<br>SALES ASSEMBLY DRAWING<br><b>molex</b> |  |  |  |  |
|  | ▽=0                   | 3 PLACES ± --- ± ---                  |      |  | CHECKED BY  | DATE         |  |  |  |  |  |
| ▽=0  | 2 PLACES ± 0.13 ± --- |                                       |      | JLAURX   | 2010/05/19  |              |  |  |  |  |  |
|  |                       | 1 PLACE ± 0.25 ± ---                  |      |  | APPROVED BY   | DATE         | MATERIAL NO.<br>SEE TABLE  |  |  |  |  |
|  |                       | 0 PLACE ± --- ± ---                   |      |  | JLAURX  | 2013/05/21   |  |  |  |  |  |
|  |                       |                                       |      | ANGULAR ± 2 °  | DOCUMENT NO.  |              | SHEET NO.  |  |  |  |  |
|  |                       |                                       |      | DRAFT WHERE APPLICABLE MUST REMAIN WITHIN DIMENSIONS | SD-170475-0002  |              | 3 OF 3   |  |  |  |  |
|  |                       |                                       |      | SIZE C   | THIS DRAWING CONTAINS INFORMATION THAT IS PROPRIETARY TO MOLEX INCORPORATED AND SHOULD NOT BE USED WITHOUT WRITTEN PERMISSION |              |  |  |  |  |  |