

THIS DRAWING IS UNPUBLISHED.

RELEASED FOR PUBLICATION

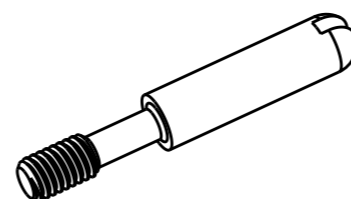
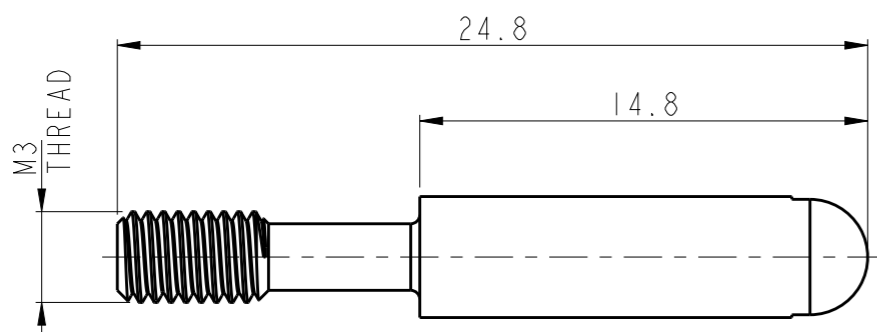
20

© COPYRIGHT 20 BY -

ALL RIGHTS RESERVED.

REVISIONS

P	LTR	DESCRIPTION	DATE	DWN	APVD
	A	INITIAL	09JAN2016	RL	CW



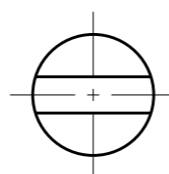
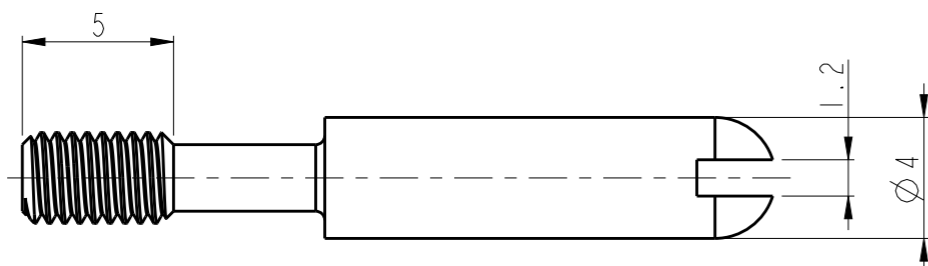
SCALE 2:1

NOTES:

- 1. TECHNICAL CHARACTERISTICS:
CODING PIN MATERIAL: SUS 303
RECOMMENDED TIGHTENING TORQUE 0.5Nm

注释:

- 1. 技术参数:
编码销材料: SUS 303
推荐拧紧力矩为0.5Nm



T0931000425-200	CODING-PIN-M3-LSTM 加长型不锈钢编码销
PART NUMBER 料号	PART DESCRIPTION 描述

THIS DRAWING IS A CONTROLLED DOCUMENT.

DWN	ROY LIU	09JAN2016
CHK	KYLE ZENG	09JAN2016
APVD	CHRIS WANG	09JAN2016

STE TE Connectivity

DIMENSIONS:	TOLERANCES UNLESS OTHERWISE SPECIFIED:
mm	
	0 PLC ±-
	1 PLC ±-
	2 PLC ±-
	3 PLC ±-
	4 PLC ±-
ANGLES ±-	
MATERIAL	FINISH
-	-
-	-

PRODUCT SPEC	-
APPLICATION SPEC	-
WEIGHT	-
CUSTOMER DRAWING	

NAME CODING-PIN-M3-LSTM			
SIZE	CAGE CODE	DRAWING NO	RESTRICTED TO
A3	00779	©-T0931000425200	-
SCALE 4:1		SHEET 1 OF 1	REV A