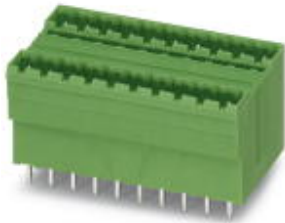


## Base strip - MDSTBV 2,5/18-G1-5,08 - 1762664

Please be informed that the data shown in this PDF Document is generated from our Online Catalog. Please find the complete data in the user's documentation. Our General Terms of Use for Downloads are valid (<http://phoenixcontact.com/download>)



The figure shows a 10-pos. version with 20 contacts

Header, Nominal current: 10 A, Rated voltage (III/2): 320 V, Number of positions: 18, Pitch: 5.08 mm, Color: green, Contact surface: Tin, Assembly: Soldering, In combination with MVSTB or FKCV plug components, both an MVSTBW (or FKCVW) and an MVSTBR plug (or FKCVR) must be used. Combination with TMSTBP plug components is not possible!



### Key commercial data

|                      |          |
|----------------------|----------|
| Packing unit         | 1 pc     |
| Custom tariff number | 85366990 |
| Country of origin    | Poland   |

### Technical data

#### Dimensions

|                |          |
|----------------|----------|
| Length         | 28.5 mm  |
| Pitch          | 5.08 mm  |
| Dimension a    | 86.36 mm |
| Pin dimensions | 1 x 1 mm |
| Hole diameter  | 1.4 mm   |

#### General

|                                  |                  |
|----------------------------------|------------------|
| Range of articles                | MDSTBV 2,5/..-G1 |
| Insulating material group        | I                |
| Rated surge voltage (III/3)      | 4 kV             |
| Rated surge voltage (III/2)      | 4 kV             |
| Rated surge voltage (II/2)       | 4 kV             |
| Rated voltage (III/3)            | 250 V            |
| Rated voltage (III/2)            | 320 V            |
| Rated voltage (II/2)             | 630 V            |
| Connection in acc. with standard | EN-VDE           |

## Base strip - MDSTBV 2,5/18-G1-5,08 - 1762664

### Technical data

#### General

|   |       |
|---|-------|
| Nominal current $I_N$                   | 10 A  |
| Maximum load current                    | 10 A  |
| Insulating material                     | PA    |
| Inflammability class according to UL 94 | V0    |
| Color                                   | green |
| Number of positions                     | 18    |

### Classifications

#### eCl@ss

|            |          |
|------------|----------|
| eCl@ss 4.0 | 272607xx |
| eCl@ss 4.1 | 27260701 |
| eCl@ss 5.0 | 27260701 |
| eCl@ss 5.1 | 27260701 |
| eCl@ss 6.0 | 27260704 |
| eCl@ss 7.0 | 27440402 |
| eCl@ss 8.0 | 27440402 |

#### ETIM

|          |          |
|----------|----------|
| ETIM 3.0 | EC001121 |
| ETIM 4.0 | EC002637 |
| ETIM 5.0 | EC002637 |

#### UNSPSC

|               |          |
|---------------|----------|
| UNSPSC 6.01   | 30211810 |
| UNSPSC 7.0901 | 39121409 |
| UNSPSC 11     | 39121409 |
| UNSPSC 12.01  | 39121409 |
| UNSPSC 13.2   | 39121409 |

### Approvals

#### Approvals

---

#### Approvals

CSA / UL Recognized / VDE Gutachten mit Fertigungsüberwachung / cUL Recognized / GOST / IECIEE CB Scheme / GOST / CCA / cULus Recognized

---

# Base strip - MDSTBV 2,5/18-G1-5,08 - 1762664

## Approvals

Ex Approvals

Approvals submitted

### Approval details

|                    |       |       |
|--------------------|-------|-------|
| CSA                |       |       |
|                    | B     | D     |
| Nominal current IN | 10 A  | 10 A  |
| Nominal voltage UN | 300 V | 300 V |

|                    |       |       |
|--------------------|-------|-------|
| UL Recognized      |       |       |
|                    | B     | D     |
| Nominal current IN | 12 A  | 10 A  |
| Nominal voltage UN | 300 V | 300 V |

|   |       |  |
|---|-------|--|
| VDE Gutachten mit Fertigungsüberwachung |       |  |
|   |       |  |
| Nominal current IN                      | 10 A  |  |
| Nominal voltage UN                      | 250 V |  |

|                    |       |       |
|--------------------|-------|-------|
| cUL Recognized     |       |       |
|                    | B     | D     |
| Nominal current IN | 12 A  | 10 A  |
| Nominal voltage UN | 300 V | 300 V |

|      |  |  |
|------|--|--|
| GOST |  |  |
|------|--|--|

# Base strip - MDSTBV 2,5/18-G1-5,08 - 1762664

## Approvals

|                                |       |
|--------------------------------|-------|
| IECEE CB Scheme                |       |
| Nominal current I <sub>N</sub> | 10 A  |
| Nominal voltage U <sub>N</sub> | 250 V |

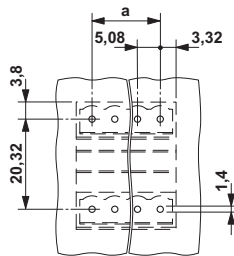
|      |  |
|------|--|
| GOST |  |
|------|--|

|                                |       |
|--------------------------------|-------|
| CCA                            |       |
| Nominal current I <sub>N</sub> | 10 A  |
| Nominal voltage U <sub>N</sub> | 250 V |

|                  |  |
|------------------|--|
| cULus Recognized |  |
|------------------|--|

## Drawings

Drilling diagram



Dimensioned drawing

