

THIS DRAWING IS UNPUBLISHED.

RELEASED FOR PUBLICATION

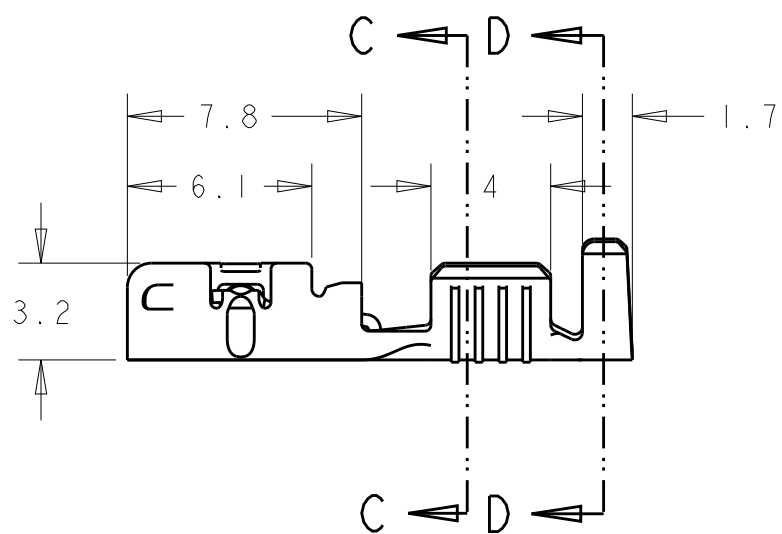
20

© COPYRIGHT 20 BY -

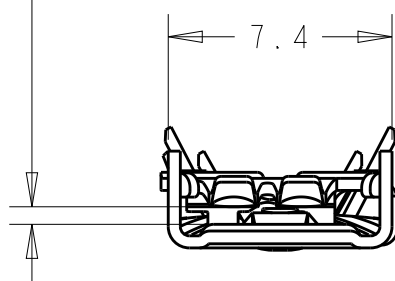
ALL RIGHTS RESERVED.

REVISIONS

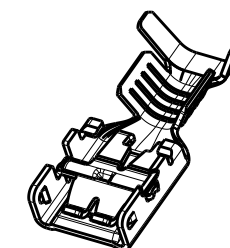
P	LTR	DESCRIPTION	DATE	DWN	APVD
	F1	REVISED PER ECR-15-008953	16JUN2015	NK	DC



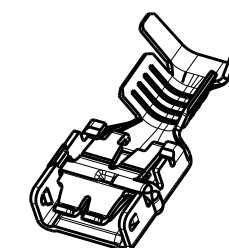
Para lengüeta de 0.8 mm
For 0.8mm tab thickness



PACKAGING DETAILS:
QUANTITY PER REEL: 8000 PCS (END FEED)

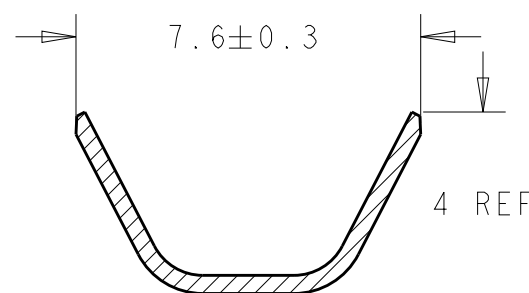
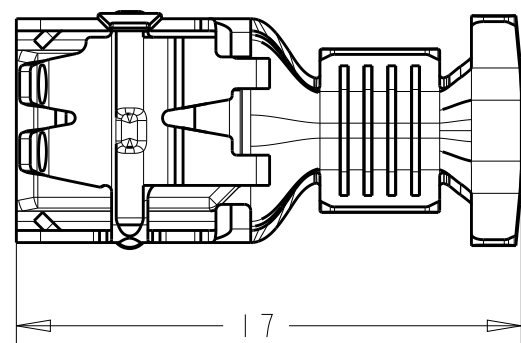


Left-sided product

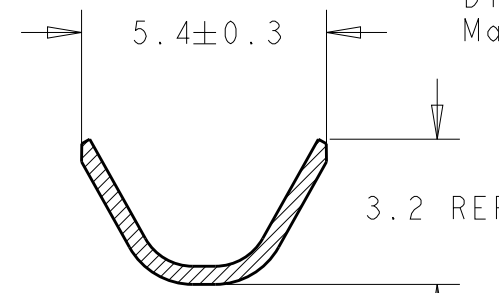


Right-sided product

Rango de hilo de >1,0 a 2,5 mm²
Wire range from >1.0 to 2.5 mm²
Diametro de aislante max 3,6 mm
Max. Insulation Diameter 3.6 mm

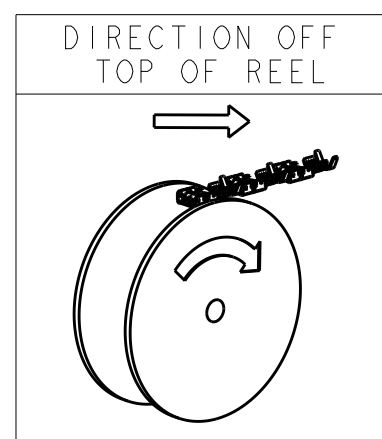


SECTION D-D
SCALE 6:1



SECTION C-C
SCALE 6:1

336076-5	Acero Steel	Preniquelado Pre-Ni
336076-3	Latón Brass	Preestañado Pre-Tin
336076-1	Latón Brass	-
Guion Dash	Material	Acabado Finish



THIS DRAWING IS A CONTROLLED DOCUMENT.

DWN J. Sal 22 Dec 04

CHK J. L 22 Dec 04

APVD -

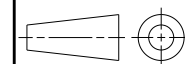
PRODUCT SPEC
108-22128 Brass
108-22150 Pre-Ni Steel

APPLICATION SPEC
114-22017

WEIGHT -

Customer Drawing

DIMENSIONS:
mm



TOLERANCES UNLESS OTHERWISE SPECIFIED:

- 0 PLC ±0.5
- 1 PLC ±0.5
- 2 PLC ±
- 3 PLC ±
- 4 PLC ±
- ANGLES ±

MATERIAL
Table

FINISH
Table



NAME
E-SPRING CONTACT 6,35 Recept
6.35 Receptacle E-SPRING CONTACT

SIZE CAGE CODE DRAWING NO RESTRICTED TO

A300779 C-336076

SCALE 4:1 SHEET 1 OF 1 REV F1