

PART NUMBER	REV	TERMINATOR	FEED TYPE	DESCRIPTION
1239060-1	A	BENCH & LEADMAKER	MECH POST FEED	HDI APPLICATOR
7-1239060-1	A	BENCH & LEADMAKER	MECH POST FEED	-1 AND SPARE PARTS
7-1239060-7	A	-	-	SPARE PARTS KIT

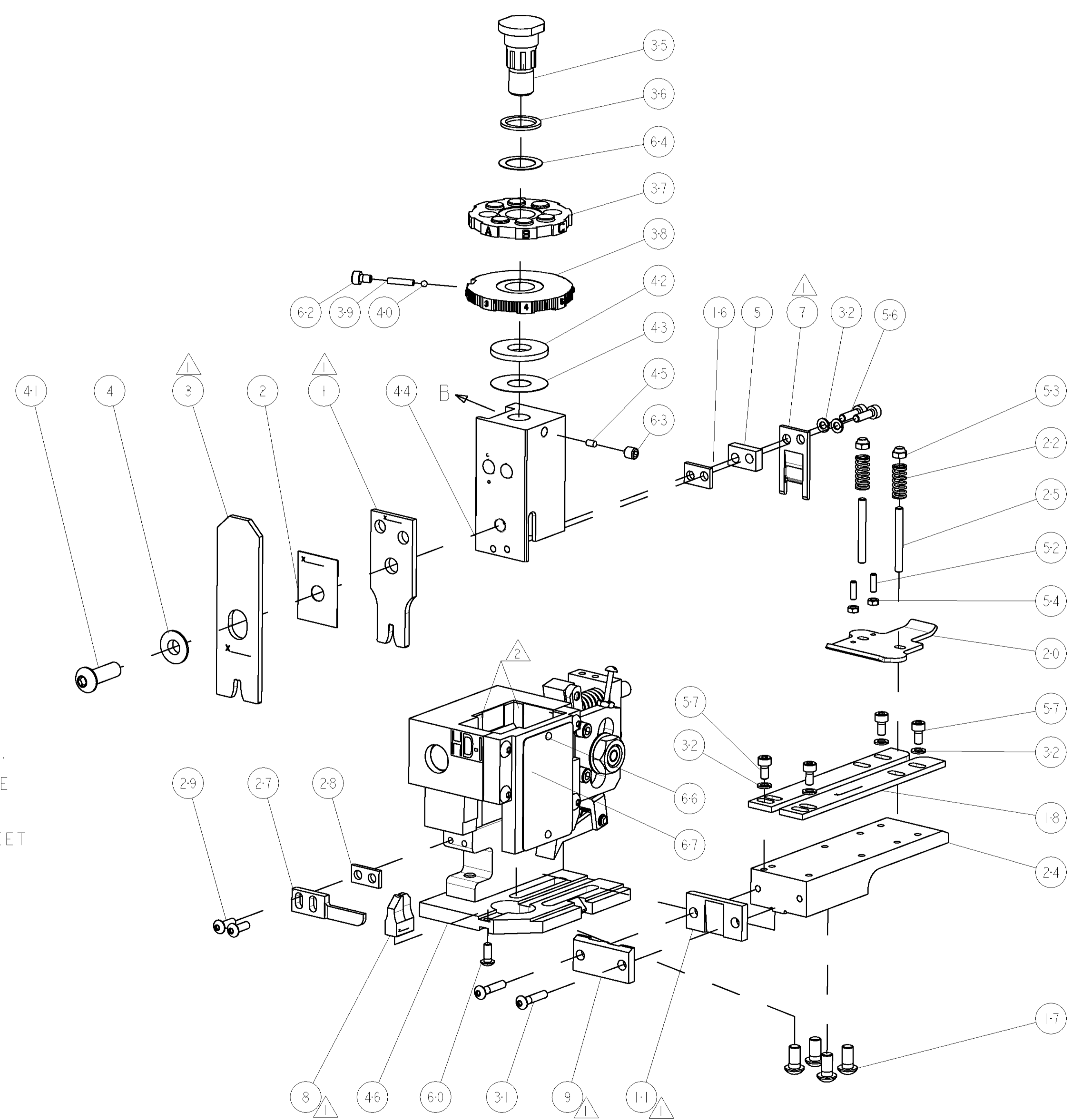
SET UP GAGE		REVISONS	
LOC	DIST	REV	DATE
A	66	A	27APR2009

CRIMP DATA	TE TERMINAL	TE CRIMP SPECS
TERMINAL NAME: .180 DIA. SHUR PLUG		
CRIMP	SIZE	TYPE
WIRE	2.79 [.110 IN]	F
INSUL	4.57 [.180 IN]	F
RANGE 18-14 AWG		
APPL INSTRUCTIONS 408-8323		
WIRE STRIP LENGTH	APPL INSTRUCTIONS	
3.96-4.78 [.156-.188 IN]	408-8323	
TERMINAL APPL SPEC	114-2042	FEED 20.32 [.800 IN]

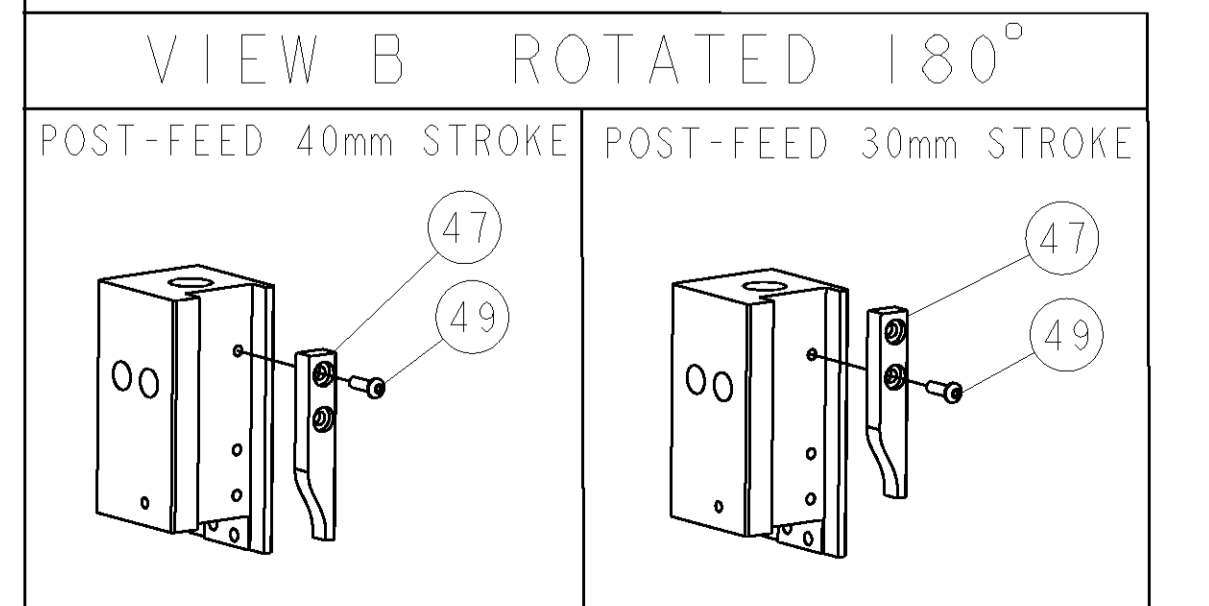
TERMINALS APPLIED			
TERMINAL			
60660	-	-	-
62715	-	-	-
-	-	-	-
-	-	-	-

WIRE SIZE	CRIMP HEIGHT	PIN PN & LENGTH [IN]
14 AWG	1.98 ±0.05 [.078 ±.002 IN]	6-354778-8 [.2835 ]
16 AWG	1.75 ±0.05 [.069 ±.002 IN]	8-354778-7 [.2930 ]
18 AWG	1.60 ±0.05 [.063 ±.002 IN]	354779-2 [.3000 ]
-	-	-
-	-	-
-	-	-
-	-	-
-	-	-
-	-	-
-	-	-



- 1 RECOMMENDED SPARE PARTS
- 2 GREASE RAM, CAM, CAM FOLLOWER AND FEED ROD LIGHTLY.
- 3 CERTAIN TERMINALS REQUIRE LUBRICATION. REFER TO THE APPLICATOR INSTRUCTION SHEET FOR MORE INFORMATION.
- 4. LUBRICATE DAILY PER THE APPLICATOR INSTRUCTION SHEET SUPPLIED WITH THE APPLICATOR.



-	1	1	1338705-2	DOCUMENTATION PACKAGE	71
-	1	1	461264-1	PLATE, IDENTIFICATION	67
-	2	2	21017-2	SCREW, DRIVE	66
-	1	1	986950-1	WASHER, FLAT PRECISION	64
-	1	1	3-18031-0	SCR, SET, CUP POINT M6 X 6.0	63
-	1	1	18023-9	SCR, SKT HD CAP M4 X 6.0	62
-	1	1	18024-7	SCR, BTN SKT HD CAP (M4 X 10.0)	60
-	4	4	1-18023-0	SCR, SKT HD CAP M4 X 8.0	57
-	2	2	9-18023-6	SCR, SKT HD CAP M4 X 14.0	56
-	2	2	18029-1	NUT, HEX, REG M3	54
-	2	2	986965-1	NUT, LOCK, HEX, TORQUE (M4)	53
-	2	2	2-18032-2	SCR, SET, FLT POINT M3 X 10.0	52
-	1	1	18024-3	SCR, BTN SKT HD CAP (M3 X 10.0)	49
-	1	1	1338676-1	CAM, UNIVERSAL POST-FEED	47
-	1	1	1338662-1	SUB ASSY, APPLICATOR FRAME	46
-	1	1	690191-1	PLUG, NYLON	45
-	1	1	1320998-1	RAM	44
-	1	1	690125-1	SHIM SUB-ASSY	43
-	1	1	690124-1	WASHER, RAM (.115)	42
-	1	1	2-18024-6	SCR, BTN SKT HD CAP (M8 X 25.0)	41
-	1	1	23241-1	BALL, STEEL	40
-	1	1	2-22278-7	SPRING, COMPRESSION	39
-	1	1	1320922-1	DISC, ADJUST, INSULATION CRIMP	38
-	1	1	354777-1	WIRE DISC, ASSEMBLY	37
-	1	1	22480-5	SPRING, COMPRESSION	36
-	1	1	690212-1	POST, RAM	35
-	6	6	18025-2	WASHER, SPRG LOCK, REG M4	32
-	2	2	1-18024-0	SCR, BTN SKT HD CAP (M4 X 20.0)	31
-	2	2	18024-8	SCR, BTN SKT HD CAP (M4 X 12.0)	29
-	1	1	1-690451-1	SPACER, STRIPPER	28
-	1	1	240639-1	STRIPPER (MACHINING)	27
-	2	2	1320906-1	STUD, THREADED	25
-	1	1	1-1320995-2	PLATE, STRIP GUIDE	24
-	2	2	4-22281-1	SPRING, DRAG	22
-	1	1	1338665-1	DRAG	20
-	2	2	454204-4	GUIDE, LOWER STRIP	18
-	4	4	1-18024-8	SCR, BTN SKT HD CAP (M6 X 12.0)	17
-	1	1	1338708-1	SPACER, SLUG BLADE	16
-	1	1	240644-5	PLATE, REAR SHEAR	11
-	-	-	-	-	10
-	1	1	1-690496-1	PLATE, FRONT SHEAR	9
-	1	2	5-1633383-3	ANVIL, COMBINATION	8
-	1	1	690474-5	BLADE, SLUG	7
-	-	-	-	-	6
-	1	1	3-240641-5	SPACER	5
-	1	1	238009-1	BLOCK, FL CRIMPER SPACER	4
-	1	2	1-1633471-5	CRIMPER, INSULATION F	3
-	1	1	455888-4	SPACER, CRIMPER	2
-	1	2	456408-3	CRIMPER, WIRE PREMIUM	1
-	77	71	-1	PART NO	ITEM NO

DIMENSIONS:		TOLERANCES UNLESS OTHERWISE SPECIFIED:	
INCHES		9 PLC	±.001
		1 PLC	±.001
		3 PLC	±.001
		4 PLC	±.001
		ANGLES	±.0001

DATE	01APR2009	DESIGNED BY	W. ZHANG
CHKD	01APR2009	APPROVED BY	S. ZOU
APVD	01APR2009	NAME	W. ZHANG
PRODUCT SPEC		END FEED HDI APPLICATOR	
APPLICATION SPEC		-	
MATERIAL	FINISH	WEIGHT	SCALE
-	-	-	3:5