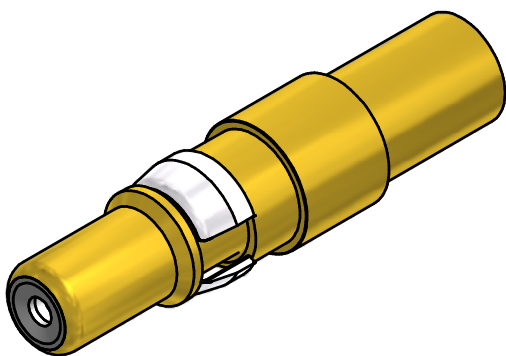
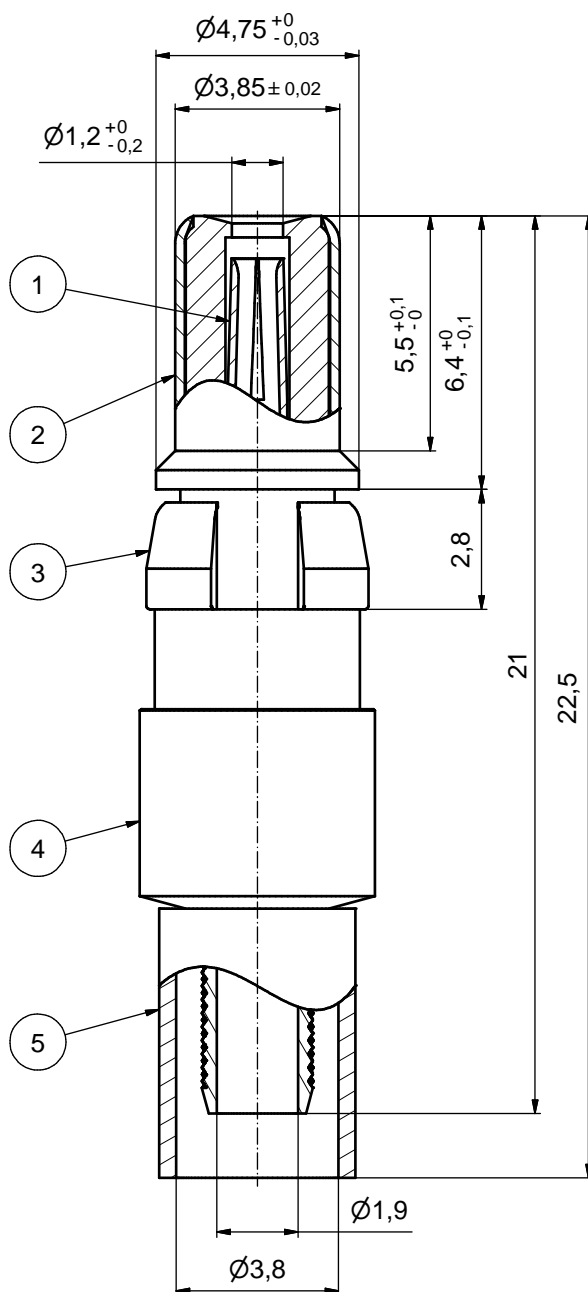
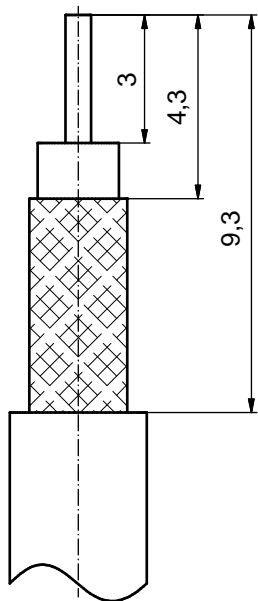


STRIPPING DIMENSIONS



**ASSEMBLY TOOLING:**

1. CENTER CONTACT:  
 USE CRIMP TOOL: 360X10329X  
 WITH TOOL INSERT: 360X11049X  
 SELECTOR SETTING: 5 (FOR AWG26 CENTER CONDUCTOR OF CABLE)
2. CRIMP FERRULE:  
 USE CRIMP TOOL: 360X10519X  
 WITH TOOL INSERT: 360X11039X  
 INSERT CAVITY B: HEX 3.83/.151

| Part no.   | Finish Pos.1                                | Finish Pos.2                                | Finish Pos.3  | Finish Pos. 4/5        |
|------------|---|---|---------------|------------------------|
| 131J21029X | min. 50µin HARD GOLD over min. 50µin NICKEL | min. 30µin HARD GOLD over min. 50µin NICKEL | NICKEL PLATED | GOLD FLASH over NICKEL |
| 131A21029X | GOLD FLASH over NICKEL                      | GOLD FLASH over NICKEL                      | NICKEL PLATED | GOLD FLASH over NICKEL |

Directive 2002/95/EC RoHS compliant

|  |             |          |            |   |  |
|--|-------------|----------|------------|---|--|
| THIS DRAWING MAY NOT BE COPIED OR REPRODUCED IN ANY WAY, AND MAY NOT BE PASSED ON TO A THIRD PARTY WITHOUT WRITTEN PERMISSION. OWNERSHIP AND COPYRIGHT OF CONEC GmbH<br><br>DO NOT ALTER CAD DRAWING BY HAND | tolerance   |          | dim. in mm | scale: 8:1  |  |
|  |             |          |            | material: COPPER ALLOY (Pos.1 - 5)  |  |
|  | drawn       | 06.10.10 | Schmidt    | title: COAXIAL CONTACT PLUG 50 OHM  |  |
|  | appd.       | 06.10.10 | Koch       | inner + outer conductor for crimp termination for cable 316U double braided |  |
|  | norm        |          |            | dwg no: Inventor 10   |  |
| d-old  |             |          | 13K2A032A  |   |  |
| a  | Origin      |          | DIN-A3     |   |  |
| rev.   | description | date     | name       | sh: 1   |  |
| <b>CONEC</b>   |             |          |            | part no: see table  |  |