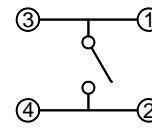
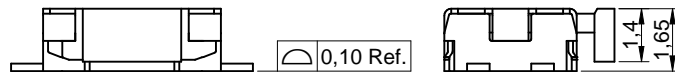
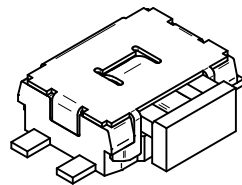
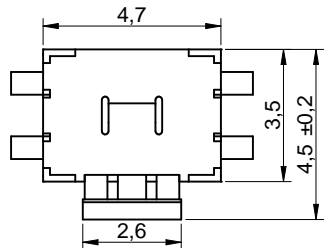


P.C.B. MOUNTING PLAN



SCHEMATIC



Scale - 5:1

**TECHNICAL CHARACTERISTICS**

**SPECIFICATION**

- >Rating: 50mA, 12VDC
- >Contact Resistance: Initial: 100mOHM max. After Life Test: 1OHM max.
- >Insulation Resistance: min. 100MOHM at 500VDC
- >Dielectric Strength: 250VAC for 1 minute
- >Bounce: 10ms max.

**MATERIAL**

- >Cover: Stainless Steel
- >Stem: PA46, UL HB
- >Frame: PA46, UL HB, color White
- >Contact: Stainless Steel with silver
- >Terminal: Copper alloy with silver plating
- >Tape: Polyimide tape

**SOLDERING INFORMATION**

- >Terminal in SMD version
- >Reflow soldering according to JEDEC J-STD 020 Hot Air
- >Hand soldering under 350°C for 3 sec. max

**ENVIRONMENTAL**

- >Storage condition: -40°C ~ +85°C
- >Operation condition: -40°C ~ +85°C
- >Compliance: Lead Free, ROHS, Reach

**PACKAGING INFORMATION**

>Tape & Reel

PN	Force	Color of Stem	Life cycle	Stroke
434 351 045 816	160g ± 50gf	White	200.000	0,25 mm ± 0,1
434 331 045 822	220g ± 50gf	Black	100.000	0,30 mm +0,1 / -0,2

This electronic component is designed and developed with the intention for use in general electronics equipments.

Before incorporating the components into any equipments in the field such as aerospace, aviation, nuclear control, submarine, transportation, (automotive control, train control, ship control), transportation signal, disaster prevention, medical, public information network etc. where higher safety and reliability are especially required or if there is possibility of direct damage or injury to human body, Würth Elektronik must be asked for a written approval.

In addition, even electronic component in general electronic equipments, when used in electrical circuits that require high safety, reliability functions or performance, the sufficient reliability evaluation-check for the safety must be performed before by the user before usage.

				<b>GENERAL TOLERANCE</b> .x = +/- 0,2 .xx = +/- 0,15		Basic material	
				Date 10-07-14		Name Jelisarow	
				Checked 10-07-14		DESCRIPTION WS-TASU 4,7x3,5 mm side push tact switch SMD version	
e	remove Contact cladding	14-11-03	DaF				
d	revised MatchCode	14-07-24	AL				
c	Bounce 10ms max.	14-04-11	DaF				
b	description	12-06-06	WJ				
a	warning text	11-10-28	WJ				
REV	FILE	DATE	BY	EDV NO	4343x10458xx.dft	Scale	5:1
						Position	
						Drawing.- No.	4343x10458xx
						System	:Solid Edge V20
						SIZE	A4