

HIGH DENSITY DOUBLE ROW LED FLEX RIBBON

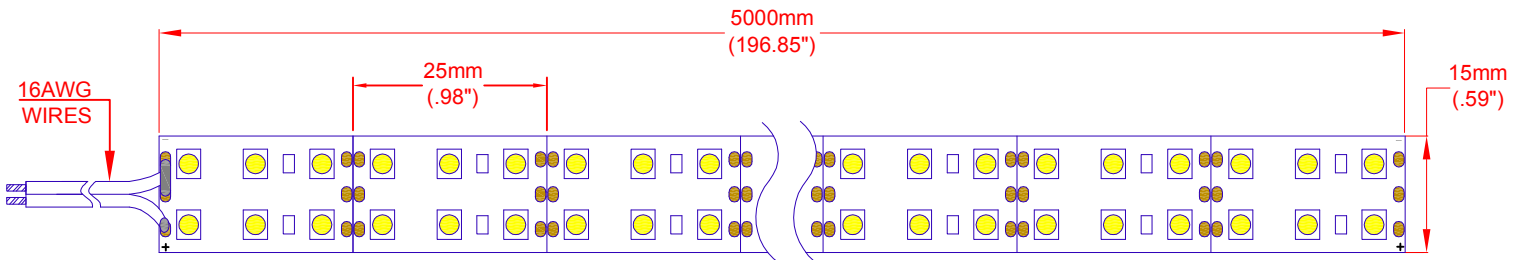
Features

VOLTAGE: 12V DC
 CURRENT: 4.3 Amps
 LED VIEWING ANGLE (2 θ 1/2): 120°

STANDARD PACKAGING:
 5 METER REEL (1200 LED'S)

OPTIONAL PACKAGING:
 INDIVIDUAL 500mm Sections (120 LED's)
 Order as ZFS-155000-CW/SEC

NOTE: Individual sections ARE NOT supplied with insulated wire connection.



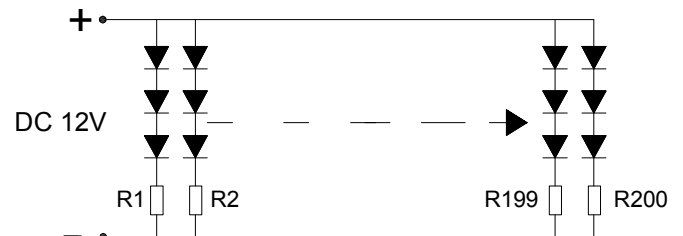
Accessories

- ZPS-1235 12V, 35 Watt Power Supply
- ZPS-1260 12V, 60 Watt Power Supply
- ZDM-01 PWM LED Dimmer

Note: ZPS-1235 and ZPS-1260 require use of wire nuts for connections.

Absolute Maximum Rating at Ta = 25°C

Parameter	Symbol	Rating	Units
Forward Current	IF	4.3	A
Power Dissipation	PD	57.25	W
Electrostatic Discharge	ESD	800	V
Operating Temperature	Topr	-20~+50	°C
Storage Temperature	Tstg	-30~+60	°C



Electro-Optical Characteristics (Ta = 25°C)

JKL Part Number	Color	Number of LED's	Input Voltage (V DC)	Power (W)	Current (A)	Radiance Angle	CCT (K)	Lumen Flux (lm)
ZFS-155000-CW	Cool White	1200	12	57.25	4.3	120°	6500°K	6925

Note

Please refer to JKL Application Sheet JKL-AS-ZFS-LED FLEX for Installation and Power Recommendations.



ATTENTION

OBSERVE PRECAUTION FOR HANDLING ELECTROSTATIC DISCHARGE SENSITIVE DEVICES

<p>THIRD ANGLE PROJECTION</p>	METRIC DIMENSIONS ARE IN mm (INCHES)	JKL COMPONENTS CORPORATION			
	TOLERANCE UNLESS OTHERWISE SPECIFIED 1 PL +/- REF. 2 PL +/- REF. ANGLE +/-	TITLE 12V HIGH DENSITY DOUBLE ROW LED FLEX RIBBON			
DRAWN BY L. WENGSTROM	APPV'D BY L.R.	DATE 3/21/16	SIZE A	FSCM NO. 55335	DRAWING NO. ZFS-155000-CW
- CAD DRAWING - MANUAL REVISIONS NOT PERMITTED			SCALE NONE	RELEASED DATE 3/21/16	REVISION DATE
REV. NO.	DESCRIPTION/ECO NUMBER	APPV'D DATE	SHEET 1 OF 1		

RELEASED	3/21/16
REV. NO.	DESCRIPTION/ECO NUMBER
APPV'D DATE	