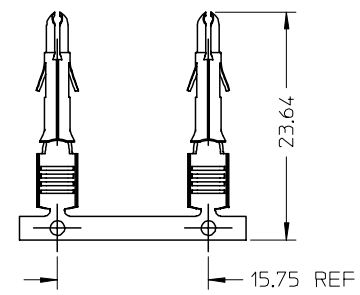
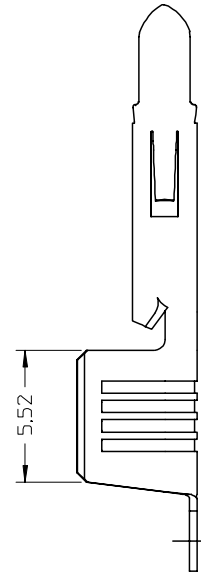
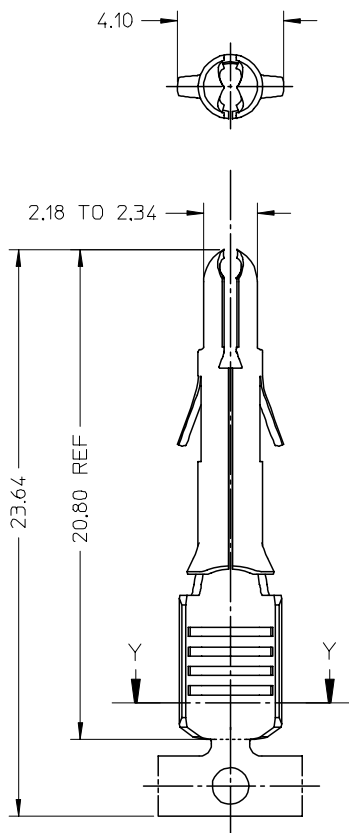
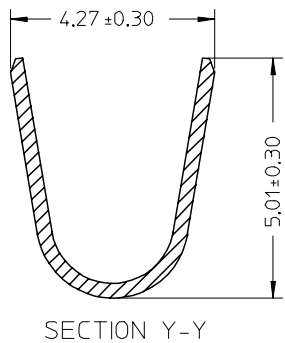


36663

MATERIAL No.	FINISH	WIRE SIZE	INSULATION DIA	PACKAGING
36663-0001	SEE NOTE 2	10-12AWG	5.08 MAX	REEL
36663-0002	SEE NOTE 2	10-12AWG	5.08 MAX	LOOSE

- NOTES:
1. MATERIAL : BRASS
  2. FINISH : HOT TIN DIP, THICKNESS 0.51 MICROMETER MIN
  3. PIN TERMINALS FOR USE WITH THE .084/(2.13) SERIES HOUSINGS.  
 PLUG (42021-\*\*)   
 CAP (42022-\*\*)   
 PIN TERMINAL TO MATE WITH SOCKET TERMINALS OF .084/(2.13) DIA SERIES
  4. CRIMP RANGE SEE CHART
  5. PRODUCT SPECIFICATION : PS-36663-001 APPLIES



TERMINALS IN CHAIN FORM  
SCALE 1:1

EC NO: 12005-0004 DRWN: SSUDHIR 2004/07/07 CHKD: DGDATHA 2004/07/07 APPR: DGDATHA 2004/07/08	DESCRIPTION 1 REV	QUALITY SYMBOLS	GENERAL TOLERANCES (UNLESS SPECIFIED) mm INCH 4 PLACES ± --- ± --- 3 PLACES ± --- ± --- 2 PLACES ± 0.25 ± --- 1 PLACE ± 0.38 ± --- ANGULAR ± 2 ° DRAFT WHERE APPLICABLE MUST REMAIN WITHIN DIMENSIONS	SCALE 5:1	DESIGN UNITS METRIC	THIRD ANGLE PROJECTION	REVISE ON CAD ONLY
		DIMENSION STYLE MM ONLY		TITLE			
		DRAWN BY SSUDHIR DATE 2004/07/01 CHECKED BY DGDATHA DATE 2004/07/01 APPROVED BY DGDATHA DATE 2004/07/01		STAMP PART BRASS TERMINAL SPLIT PIN MLX 10-12AWG 5.08 INS DIA			
		MATERIAL NO. SEE CHART DOCUMENT NO. SD-36663-001 SHEET NO. 1 OF 1		MOLEX INCORPORATED			