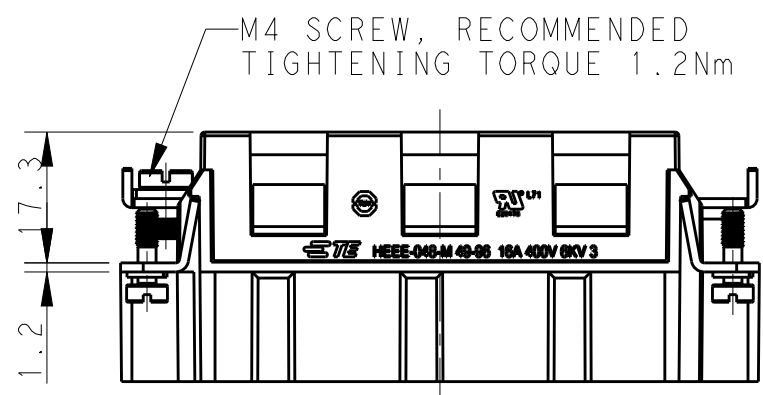
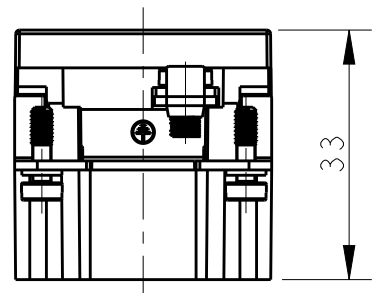
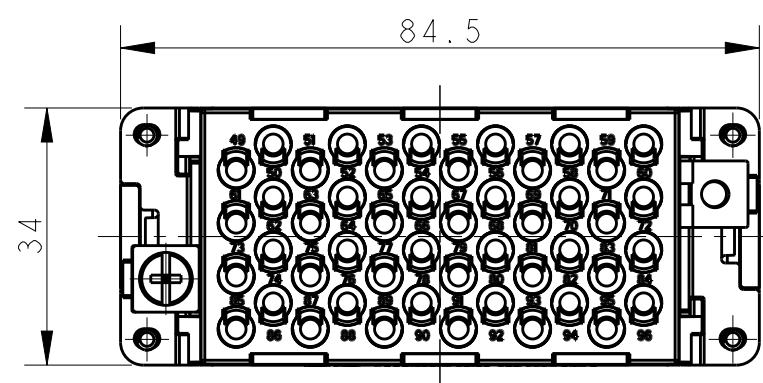
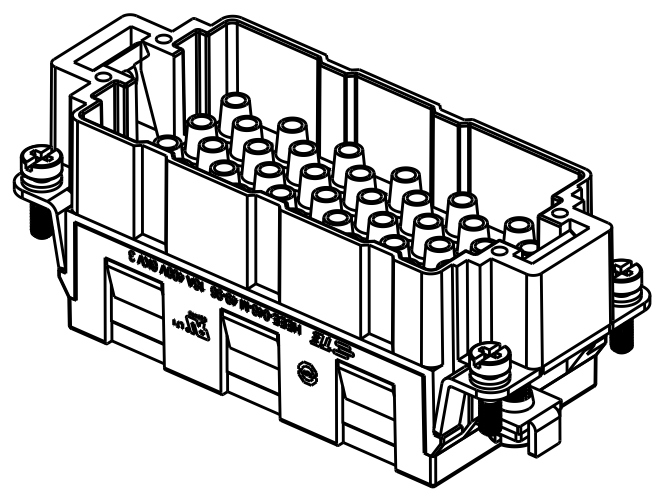


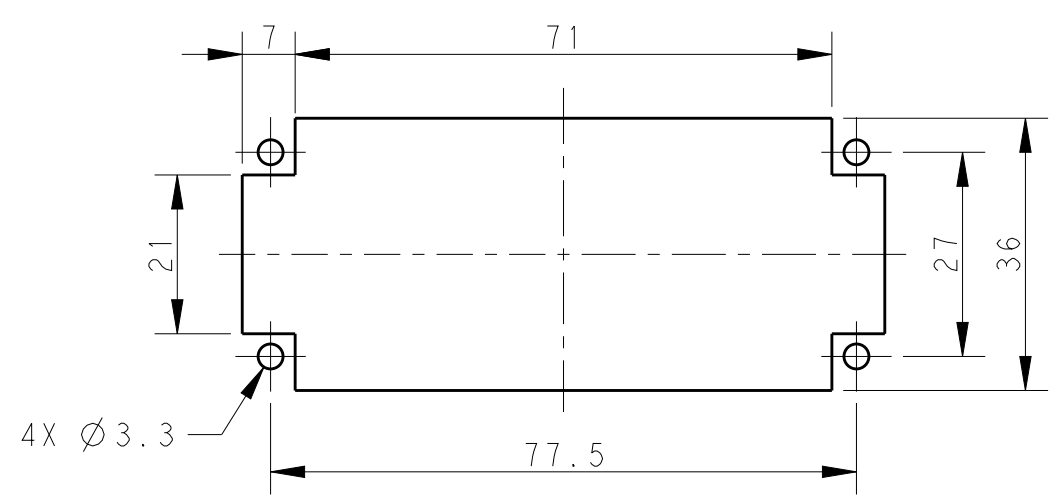
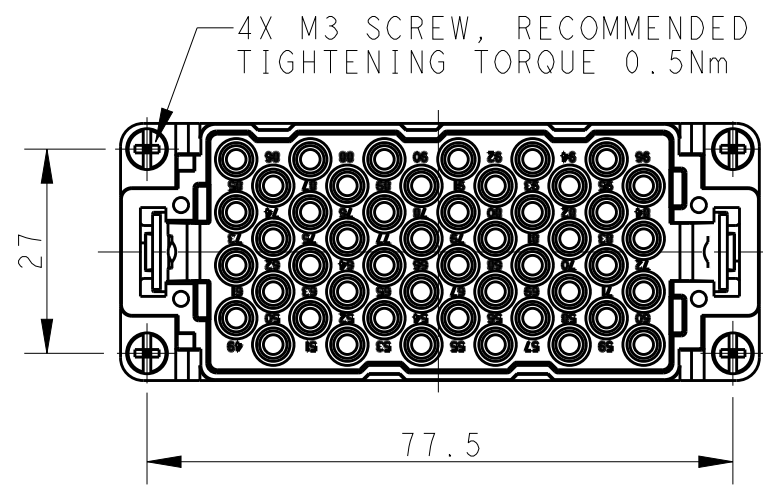
THIS DRAWING IS UNPUBLISHED. RELEASED FOR PUBLICATION 20  
 © COPYRIGHT 20 BY - ALL RIGHTS RESERVED.

REVISIONS					
P	LTR	DESCRIPTION	DATE	DWN	APVD
	A	INITIAL	29JAN2016	YC	CW




NOTES:  
 1. TECHNICAL CHARACTERISTICS:  
 INSULATION MATERIAL: PC  
 RATED VOLTAGE: 400V  
 RATED CURRENT: 16A  
 INSULATION RESISTANCE:  $\geq 400M\Omega$   
 RATED IMPULSE VOLTAGE: 6KV  
 POLLUTION DEGREE: 3  
 FLAMMABILITY: UL94V-0  
 MATING CYCLES: 500 CYCLES  
 OPERATION TEMPERATURE:  $-40^{\circ}C \sim +125^{\circ}C$   
 WIRE RANGE:  $0.14mm^2 \sim 4mm^2$  (AWG26-AWG12)  
 CONTACT TYPE: CRIMP CONTACT  
 2. CONTACTS NEED TO BE ORDERED SEPARATELY.  
 (ORDER No. REFER TO DRAWING: T20300X10XX000)

注释:  
 1. 技术参数:  
 绝缘材料: PC  
 额定电压: 400V  
 额定电流: 16A  
 绝缘电阻:  $\geq 400M\Omega$   
 脉冲电压: 6KV  
 污染等级: 3  
 阻燃等级: UL94V-0  
 插拔次数: 500次  
 工作温度:  $-40^{\circ}C \sim +125^{\circ}C$   
 接线范围:  $0.14mm^2 \sim 4mm^2$  (AWG26-AWG12)  
 接线类型: 冷压接  
 2. 端子需要单独订购。  
 (订货号参考图面: T20300X10XX000)



PANEL CUT FOR INSERTS FOR USE WITHOUT HOODS/ HOUSINGS

T2050962101-000	HEEE-048-M 49-96 HEEE-048公插 49-96
PART NUMBER 料号	PART DESCRIPTION 描述

THIS DRAWING IS A CONTROLLED DOCUMENT.		DWN 29JAN2016 YORK CHEN		 TE Connectivity	
DIMENSIONS: mm		CHK 29JAN2016 KYLE ZENG			
TOLERANCES UNLESS OTHERWISE SPECIFIED:		APVD 29JAN2016 CHRIS WANG		NAME HEEE-048-M 49-96	
0 PLC $\pm$ -		PRODUCT SPEC 108-137068		SIZE	
1 PLC $\pm$ -		APPLICATION SPEC 114-137068		CAGE CODE	
2 PLC $\pm$ -		WEIGHT		DRAWING NO	
3 PLC $\pm$ -		Customer Drawing		A300779	
4 PLC $\pm$ -		SCALE 1:1		SHEET 1 OF 1	
ANGLES $\pm$ -		RESTRICTED TO		REV A	
FINISH		-		-	
MATERIAL		-		-	