

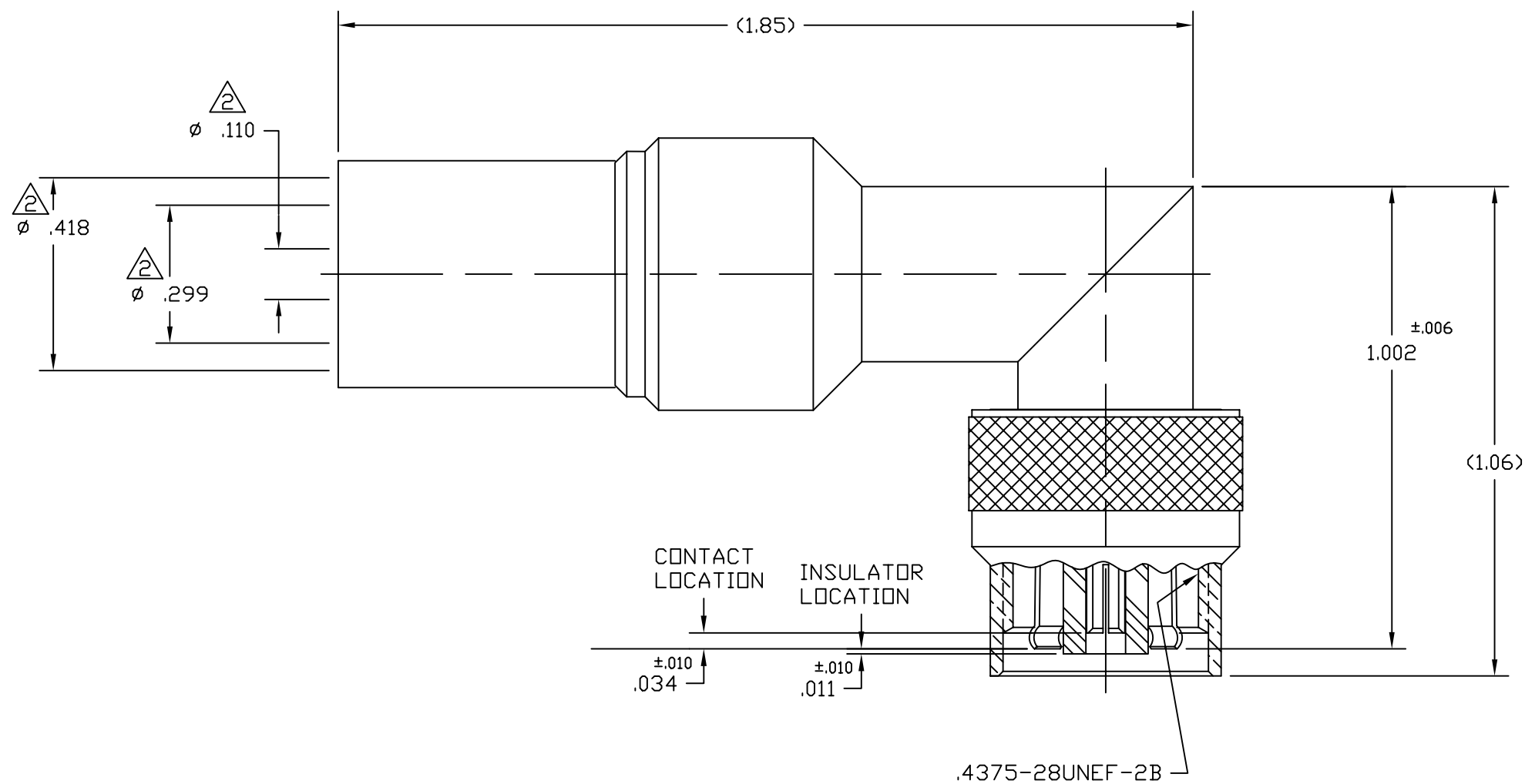


NOTES:

1. PLATING MUST CONFORM TO AMPHENOL SPEC. 349-50560.
2.  CABLE ENTRY DIMENSIONS.
3. DIMENSIONS ENCLOSED IN PARENTHESIS ARE REFERENCE.
4. SEE AMPHENOL SPEC. 349-50588 FOR CABLE STRIPPING & ASSEMBLY INSTRUCTIONS.
5. DO NOT SCALE THIS DRAWING.
6. REMOVE ALL BURRS, BREAK SHARP EDGES AND CORNERS .005 MAXIMUM, UNLESS OTHERWISE SPECIFIED.
7. UNLESS OTHERWISE SPECIFIED, ALL DIMENSIONS ARE AFTER PLATING.

| | | | | | |
|--|-----|-------------------------------|----------|-------|--------|
| 31-5680 | | REVISIONS | | | |
| DRAWING NO. | REV | DESCRIPTION | DATE | ECO | APPR |
| THIRD ANGLE PROJ.  | A | OFFICIAL ENG. RELEASE TO MFG. | | | |
| | C | ADDED SHEET 2 | 4/30/96 | 40753 | CPM/DR |
| | D | SEE SHEET 1 FOR REVISIONS | 10/11/96 | 41596 | CPM/ |
| | E | SEE SHEET 1 FOR REVISIONS | 2/14/05 | 45393 | CPM/ |
| | F | SEE SHEET 1 FOR REVISIONS | 6/2/06 | 46104 | CPM/ |



CUSTOMER OUTLINE DRAWING
ALL OTHER SHEETS ARE FOR INTERNAL USE ONLY

| | | | | | |
|---|---------------------------|--|------------------|---|--|
| UNLESS OTHERWISE SPECIFIED, DIMENSIONS ARE IN INCHES AND TOLERANCES ARE: 2 PLACE DECIMAL 3 PLACE DECIMAL ANGLES ±.015 (0,381 mm) ±.005 (0,127 mm) ± 1' | MATERIAL | DRAWN C. McGRATH | DATE 6/8/95 | TITLE TNC RIGHT ANGLE PLUG REVERSE INTERFACE FOR BELDEN 9913 | Amphenol Amphenol Corporation RF/Microwave Operations Danbury, Conn. U.S.A. 06810 |
| | REFERENCE EAR 964132-1 | ENGINEER D. ROYCE | DATE 4/30/96 | | |
| NOTICE - These drawings, specifications, or other data (1) are, and remain the property of Amphenol Corp. (2) must be returned upon request; and (3) are confidential and not to be disclosed to any person other than those to whom they are given by Amphenol Corp. The furnishing of these drawings, specifications, or other data by Amphenol Corp., or to any other person to anyone for any purpose is not to be regarded by implication or otherwise in any manner licensing, granting rights or permitting such holder or any other person to manufacture, use or sell any product, process or design, patented or otherwise, that may in any way be related to or disclosed by said drawings, specifications, or other data. | | APPROVED D. ROYCE | DATE 4/30/96 | SCALE: 3:1 | SHEET 2 OF 2 |
| | | CAD FILE H:\DEPT611\TNC\031\ASSY\5680SHT2 | CODE ID 74868 | DWG SIZE B | DRAWING NO. 31-5680 |