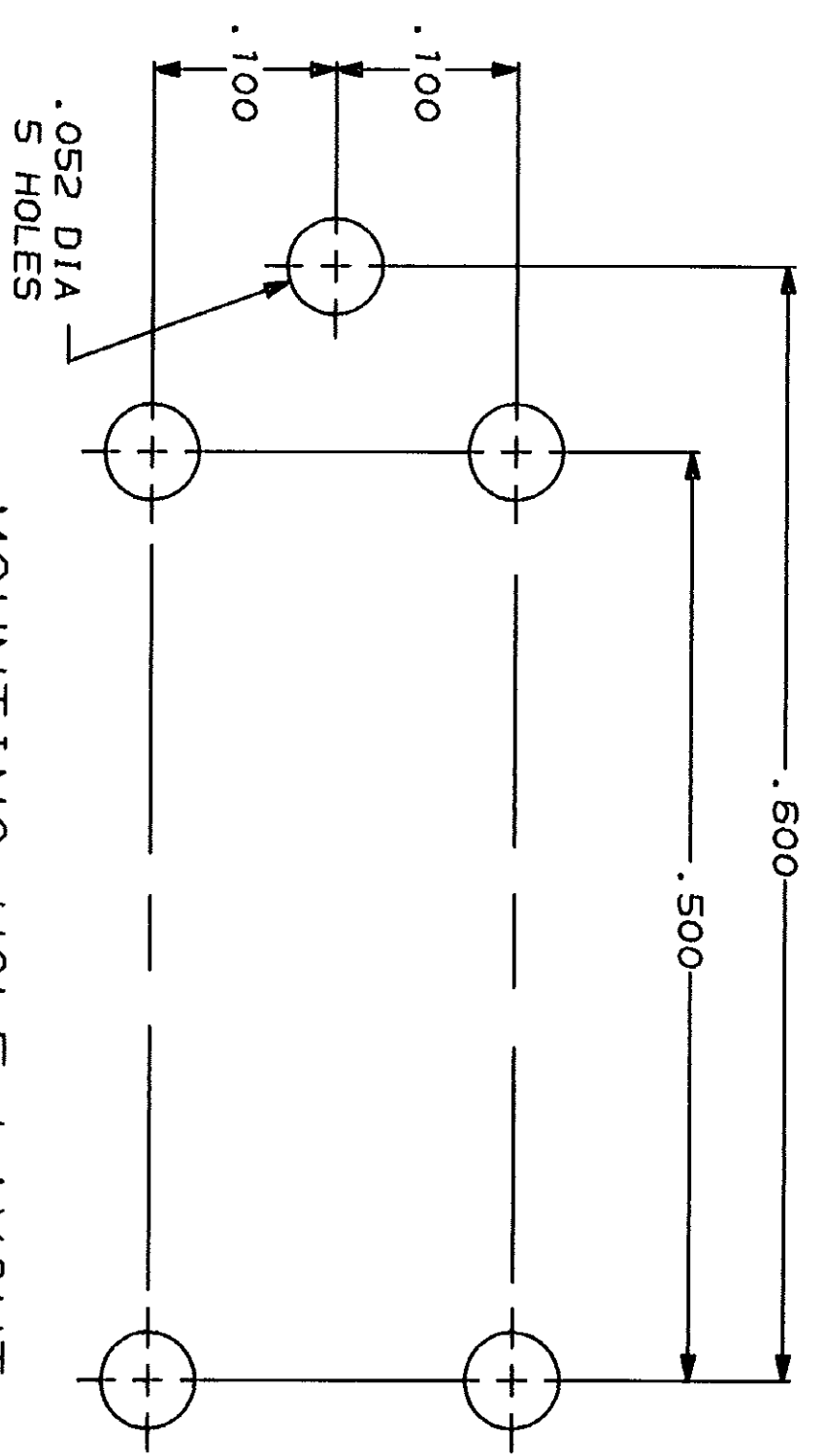
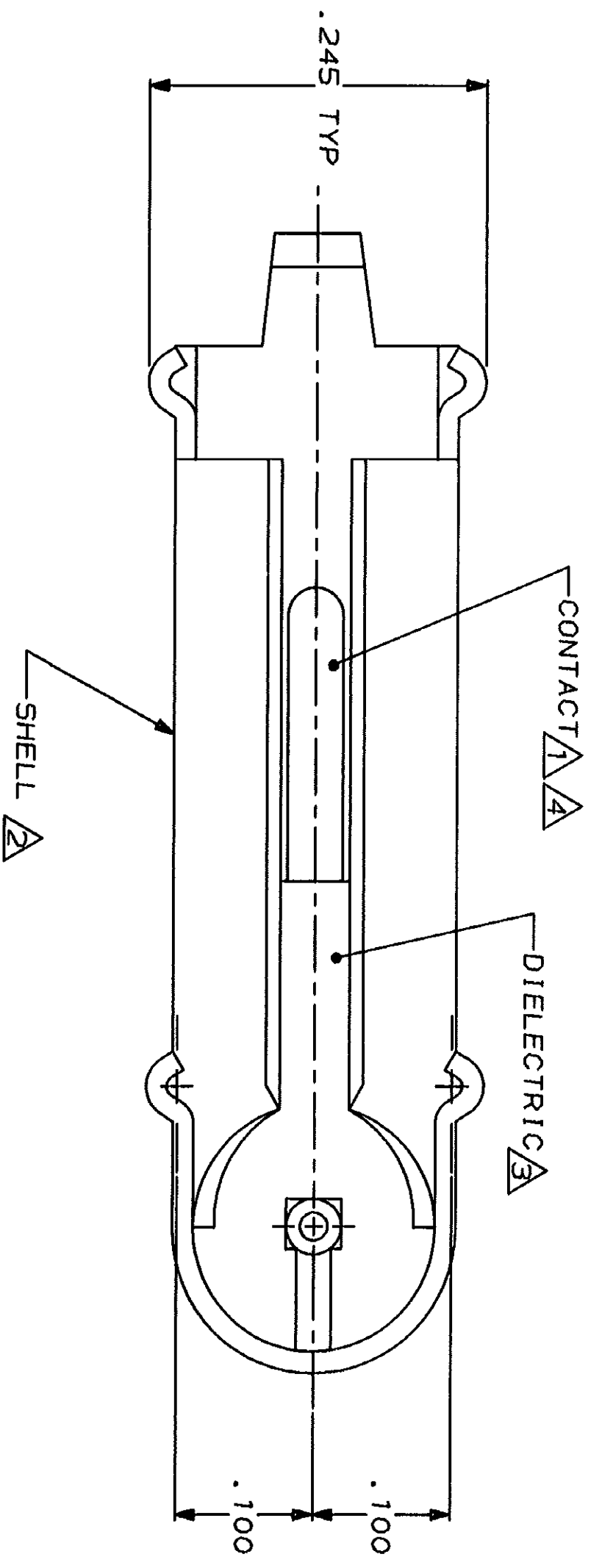
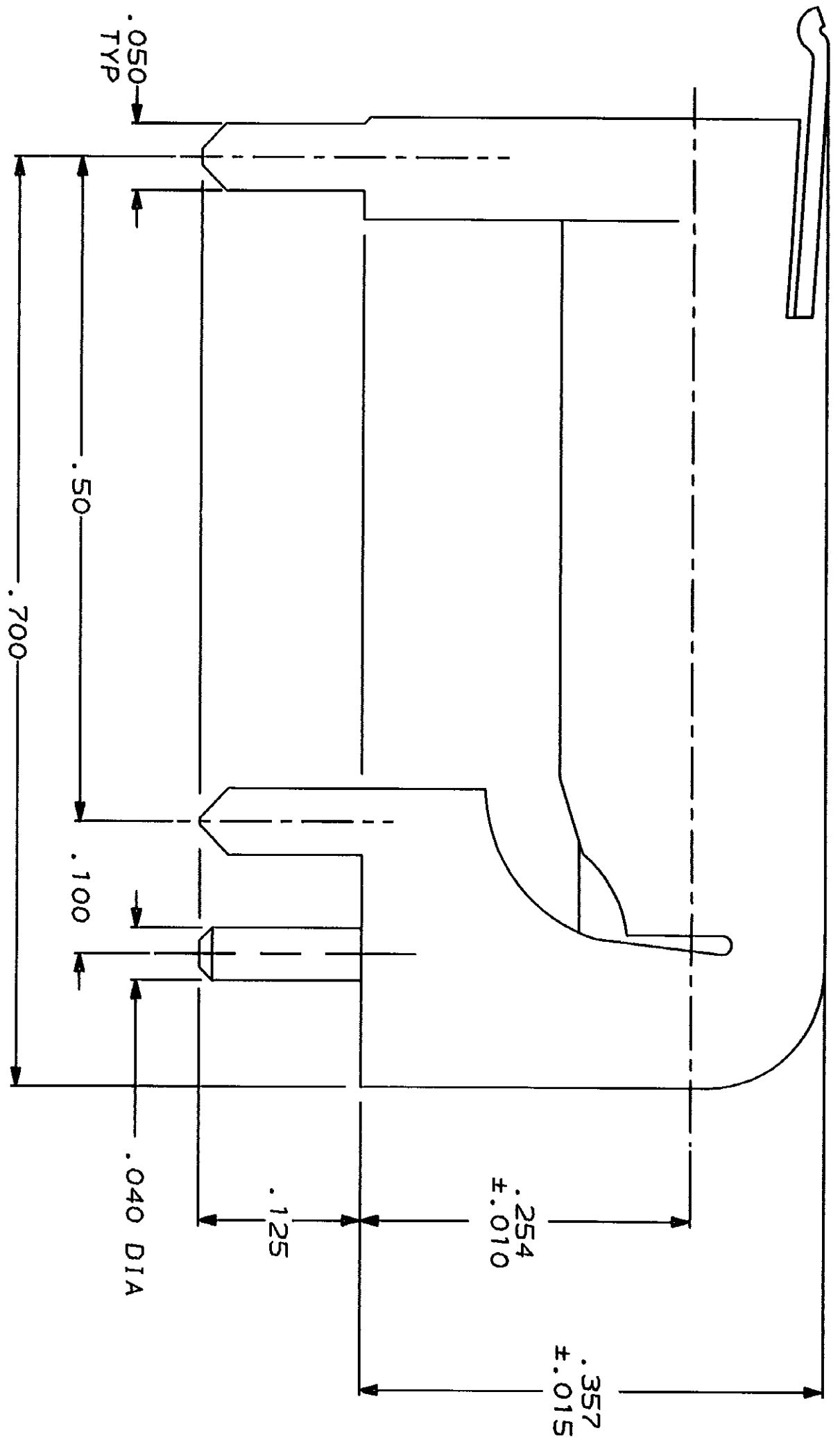


LOC	DIST	REV	DATE	APPD
AJ	16	P		
		F		
		Y		
		Z		

REV	DATE	APPD
1	02/23/89	JPD

- 1 BRASS PER QQ-B-626
- 2 BRASS PER MIL-C-50
- 3 POLYPROPYLENE, GENERAL PURPOSE.
- 4 GOLD PLATE PER MIL-G-45204, .000030 MIN THK.
- 5 TIN-LEAD PLATE PER ASTM-B-545
- 6. FOR USE WITH .062 MAX PRINTED CIRCUIT BOARD.
- 7. SEE I.S. 1204.



OBSOLETE	5	50084-4
	4	50084-1
SHELL FINISH		PART NUMBER

DR	J.L. GROFT	6-30-89
CHK	S.J. MAGARO	9-28-89
APPD	M. SNEED	1-16-90
APPD	M. SNEED	1-16-90
PRODUCT SPEC	108-12081	
FINISH	4 2 3	
APPLICATION SPEC		
WEIGHT		

DO NOT SCALE PRINT. UNLESS SPECIFIED DIMENSIONS IN INCHES TOLERANCES ON: 2 PLC DEC ± .01 3 PLC DEC ± .008 ANGLES # MATERIAL	AMP INCORPORATED Harrisburg, Pa. 17105	SOCKET, PCB, SPRING LATCH, MINIATURE
SIZE	FSCM NO	DRAWING NO
C	00779	50084
SCALE	10:1	SHEET
		1 OF 1