

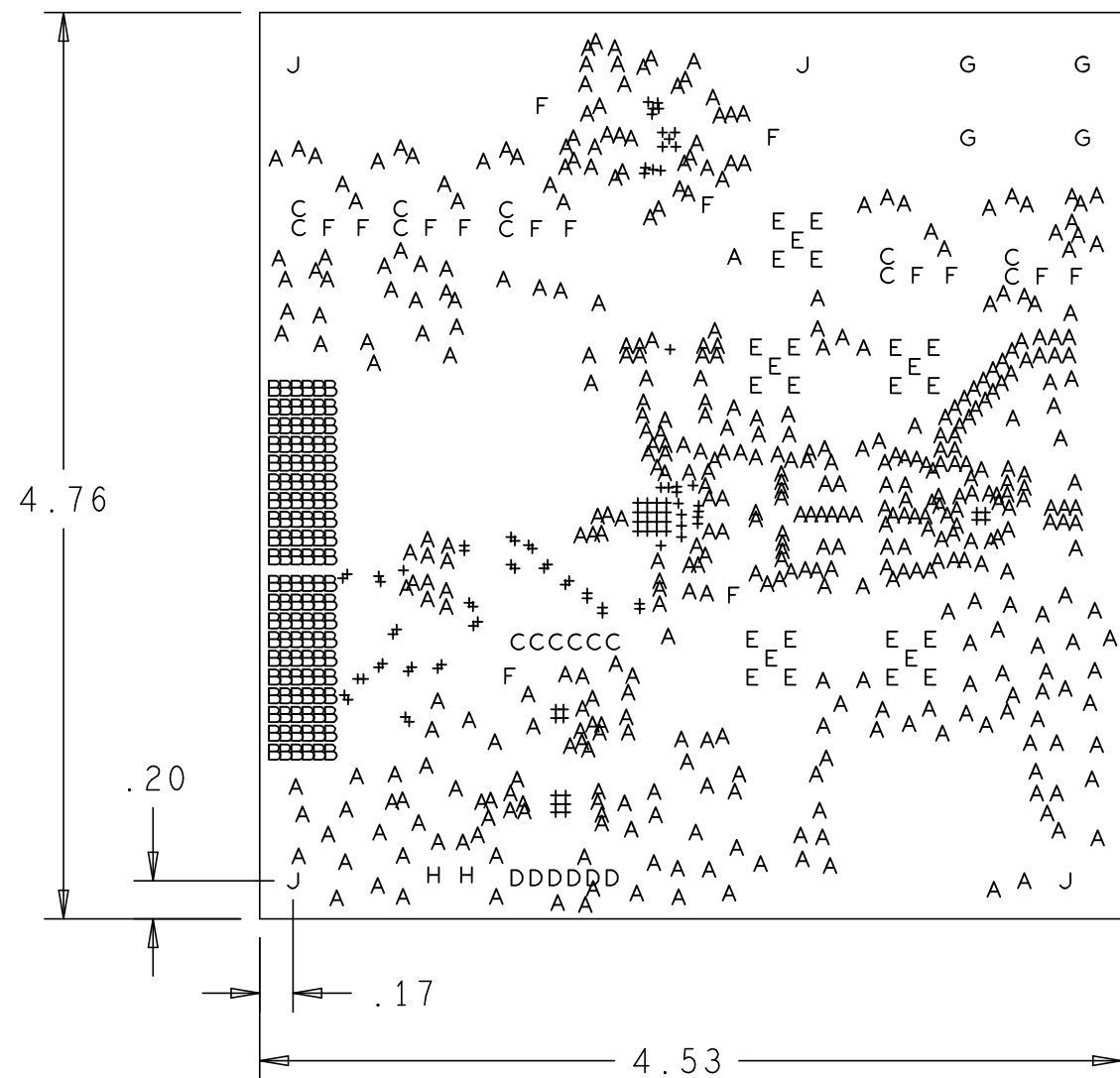
| REVISIONS | | | |
|-----------|---------------------------|---------|----------|
| REV | DESCRIPTION | DATE | APPROVED |
| B | REVISED J17 J18 PLACEMENT | 08NOV10 | J.C. |

NOTES:

- MATERIALS; FR-4, IN ACCORDANCE WITH IPC-L-130 (LATEST REV.). GLASS FABRIC BASE, EPOXY RESIN, FIRE RESISTANT.
- BONDING AGENT; PREIMPREGNATED B STAGE EPOXY GLASS CLOTH IN ACCORDANCE WITH IPC-L-109 (LATEST REV.).
- CLADDING; EXTERNAL LAYERS 1/2 OZ. COPPER, OVERPLATE TO 1 1/2 OZ. INTERNAL PLANE LAYERS 1 OZ. COPPER.
- SOLDER MASK; SHALL BE BLUE LIQUID PHOTOIMAGABLE (LPI) APPLIED ON BOTH SIDES OVER BARE COPPER AND SHALL MEET IPC-SM-840 (LATEST REV.) CLASS 3.
- SILK SCREEN; SHALL BE PERMANENT NON-CONDUCTIVE EPOXY INK, COLOR WHITE.
- U.L. RATING; 94VO MINIMUM.

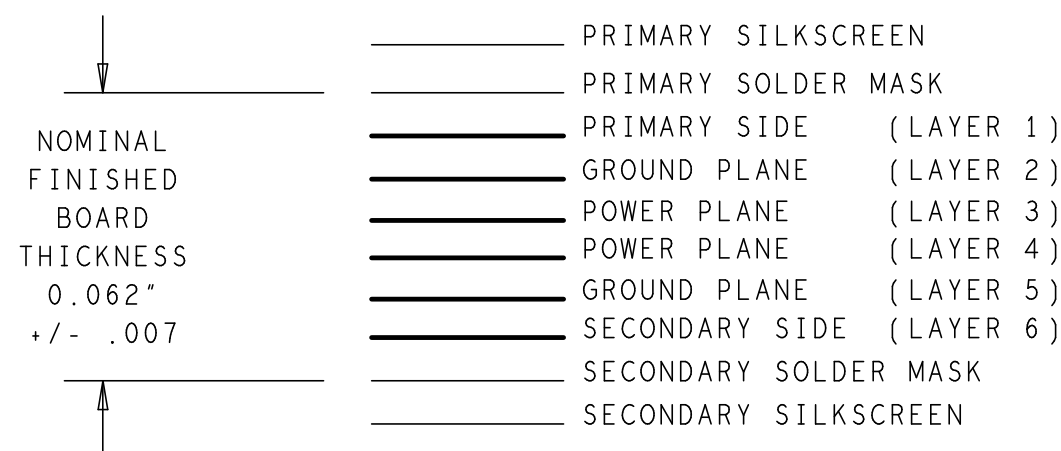
FABRICATION:

1. REFER TO IPC-6010 SERIES (LATEST REV.), CLASS 2 FOR FABRICATION UNLESS OTHERWISE SPECIFIED.
2. UNDIMENSIONED HOLES TO BE LOCATED WITHIN +/- .005 OF THEIR TRUE POSITION WITH RESPECT TO ARTWORK.
3. PLATED HOLE WALL THICKNESS SHALL NOT BE LESS THAN .001 INCH MINIMUM AVERAGE, WITH NO READING LESS THAN .0008 BY CROSS SECTION.
4. HOLE DIAMETERS APPLY AFTER PLATING.
5. FINISHED CONDUCTOR WIDTHS SHALL NOT BE REDUCED FROM THE NOMINAL, INDICATED ON THE MASTER PATTERN, BY MORE THAN THE CONDUCTOR THICKNESS.
6. MINIMUM DESIGN LINE WIDTH IS .005 INCH.
7. MINIMUM DESIGN SPACING IS .005 INCH.
8. BOARD/PANEL MUST MEET IPC-A-600 (LATEST REV.) CLASS 2 FOR FLATNESS.
9. MFR. TO LEGIBLY ETCH OR STAMP/SCREEN WITH PERMANENT NON-CONDUCTIVE INK ON SECONDARY SIDE IN A CLEAR AREA UNLESS OTHERWISE INDICATED;
 - A. U.L. CODE
 - B. DATE CODE (STAMP)
 - C. FLAMMABILITY RATING
 - D. MFR. LOGO
 - E. SUCCESSFUL ELECTRICAL BOARD TEST.
10. NON-FUNCTIONAL PADS MAY BE REMOVED FROM INNER SIGNAL LAYERS AT MFR. DISCRETION.
11. IF PAD SIZES PROVIDED ARE NOT LARGE ENOUGH TO MAINTAIN ANNULAR RING REQUIREMENT, MFR. MAY TEAR DROP PADS TO MAINTAIN ANNULAR RING AT PAD TO CIRCUIT INTERFACE ONLY AND MUST INSURE ELECTRICAL INTEGRITY. REPAIRS PER IPC-R-700 ARE ALLOWED.
12. MODIFICATIONS TO THE ARTWORK, OTHER THAN THOSE DESCRIBED ON THE FABRICATION DRAWING, ARE NOT ALLOWED WITHOUT WRITTEN AUTHORIZATION.
13. FINISH: SURFACES SHALL HAVE ENIG FINISH PLATED WITH 2-6 MICROINCHES OF IMMERSION GOLD OVER 100-200 MICROINCHES OF ELECTROLESS NICKEL.



PRIMARY SIDE

6 LAYER STACKUP



CHARACTERISTIC IMPEDANCE = 50 OHMS +/- 10%
 ARTWORK LINE WIDTH FOR IMPEDANCE CONTROLLED LINES = 0.008" FOR LAYER 1 AND 6.

DIFFERENTIAL IMPEDANCE = 100 OHMS +/- 10%
 ARTWORK LINE WIDTH FOR IMPEDANCE CONTROLLED LINES = 0.005" FOR LAYER 1 AND 6

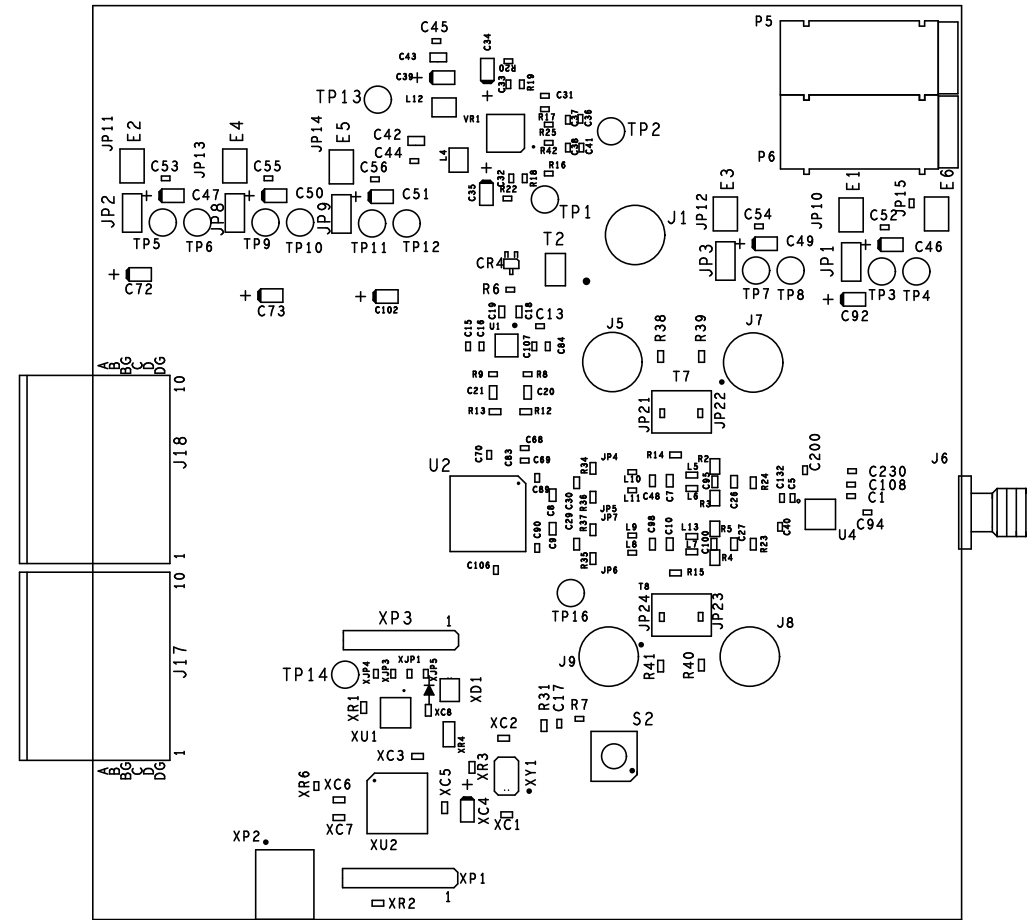
HOLE TOLERANCE

UNLESS SPECIFIED
 PLATED: +/- .003
 NON PLATED: +/- .001

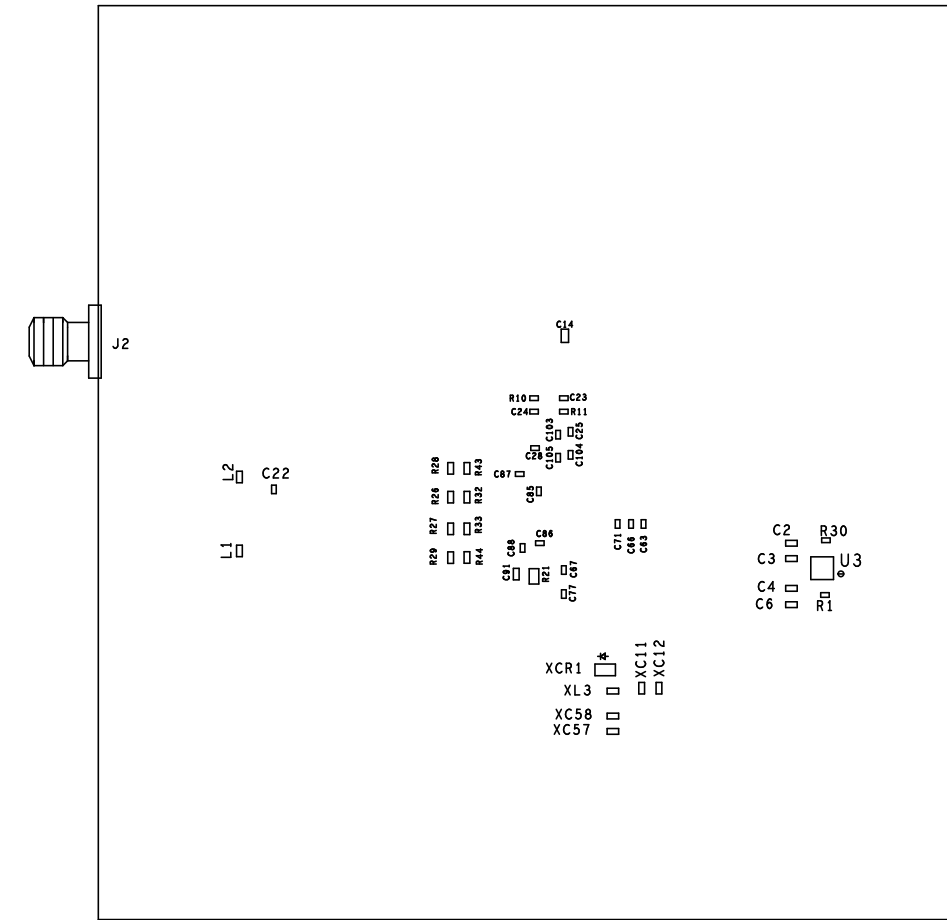
| FINISHED HOLES IN MILS | | | | |
|------------------------|-------|------------|-----|-----------------|
| ALL UNITS ARE IN MILS | | | | |
| FIGURE | SIZE | PLATED | QTY | TOLERANCE/NOTES |
| + | 10.0 | PLATED | 100 | |
| A | 16.0 | PLATED | 449 | |
| B | 25.0 | PLATED | 120 | |
| C | 40.0 | PLATED | 16 | |
| D | 45.0 | PLATED | 6 | |
| E | 60.0 | PLATED | 25 | |
| F | 63.0 | PLATED | 15 | |
| G | 75.0 | PLATED | 4 | |
| H | 40.0 | NON-PLATED | 2 | |
| J | 155.0 | NON-PLATED | 4 | |

| | | | | | |
|---|-----------------|---------|---------------------------|---|----------------|
| UNLESS OTHERWISE SPECIFIED DIMENSIONS ARE IN INCHES TOLERANCES DECIMALS FRACTIONS ANGLES .XX +/- .010 --1/32 +/- .2 .XXX +/- .005 | NCDRILL | | | HSC DIVISION 804 WOBURN STREET WILMINGTON, MA 01887 | |
| | APPROVAL | DATE | | TITLE | |
| MATERIAL | DRAWN BY P.M.A. | 24FEB10 | AD9783 - DPG2 - EBZ BOARD | | |
| FINISH | DESIGNED | | SIZE | FSCM NO | DRAWING NUMBER |
| | CHECKED | | C | | HSC 10004 |
| DO NOT SCALE DWG | APPROVED | | SCALE | 1/1 | SHEET 1 OF 1 |
| | MFG ENGINEER | | | | REV B |


| REVISIONS | | | |
|-----------|---------------------------|---------|----------|
| REV | DESCRIPTION | DATE | APPROVED |
| B | REVISED J17 J18 PLACEMENT | 08NOV10 | J.C. |



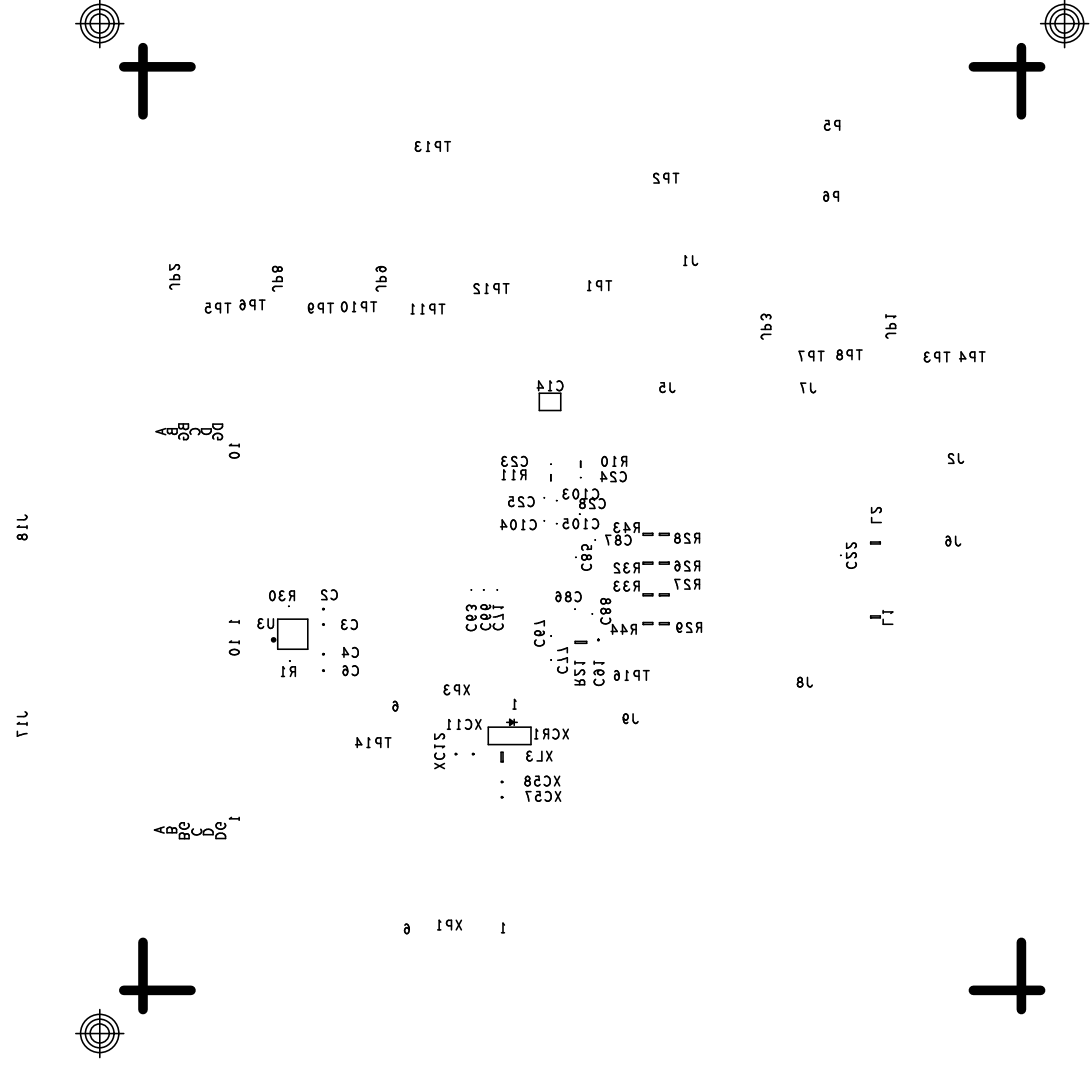
PRIMARY SIDE



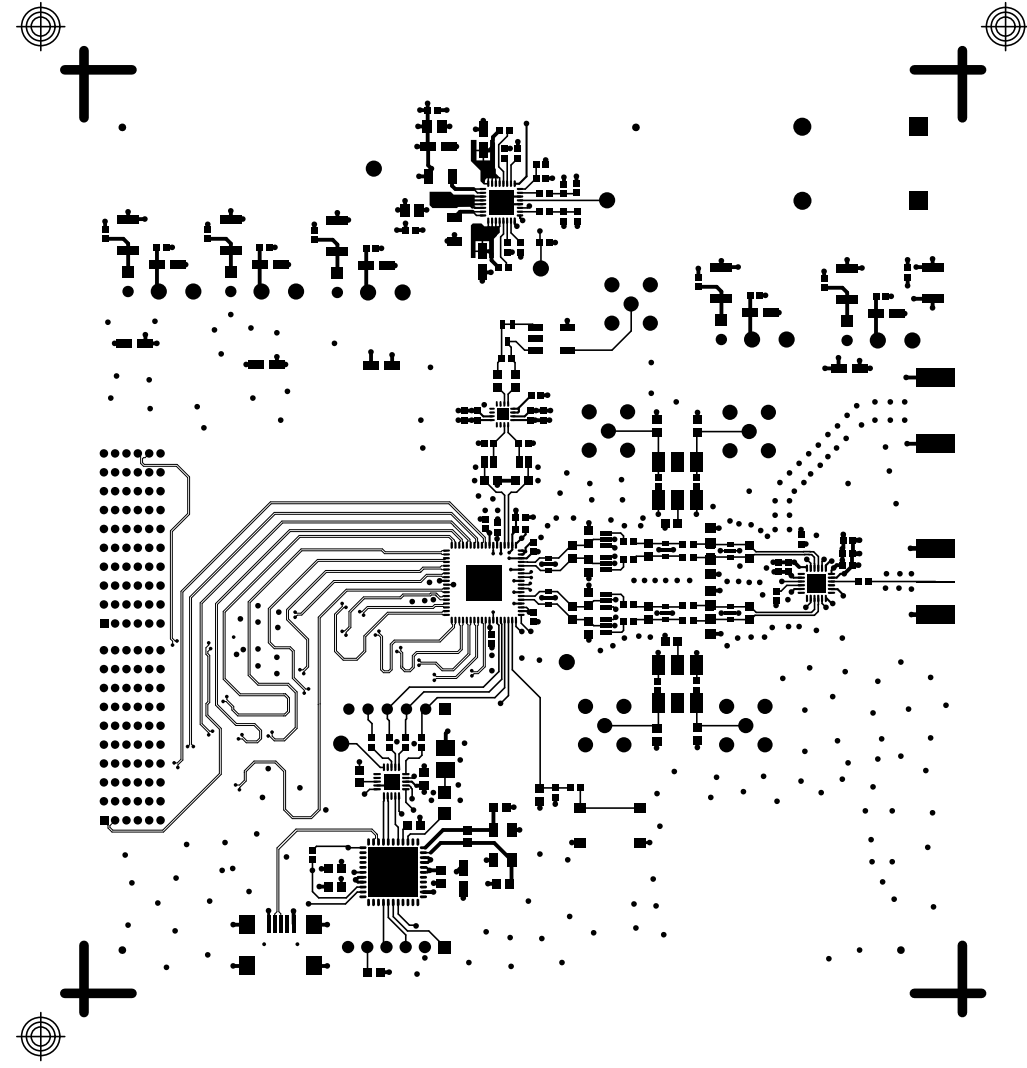
SECONDARY SIDE

| | | | | |
|---|-----------------|---------|---|--------------|
| UNLESS OTHERWISE SPECIFIED DIMENSIONS ARE IN INCHES TOLERANCES DECIMALS FRACTIONS ANGLES .XX +/- .010 +/- 1/32 +/- 2 .XXX +/- .005 | ASSEMBLY | |  ANALOG DEVICES HSC DIVISION 804 WOBURN STREET WILMINGTON, MA 01887 | |
| | APPROVAL | DATE | TITLE | |
| MATERIAL | DRAWN BY P.M.A. | 24FEB10 | AD9783 - DPG2 - EBZ BOARD | |
| FINISH | DESIGNED | | SIZE | FSCM NO |
| | CHECKED | | C | |
| | APPROVED | | DRAWING NUMBER | REV |
| | MFG ENGINEER | | HSC 10004 | B |
| DO NOT SCALE DWG | | | SCALE 1/1 | SHEET 1 OF 1 |

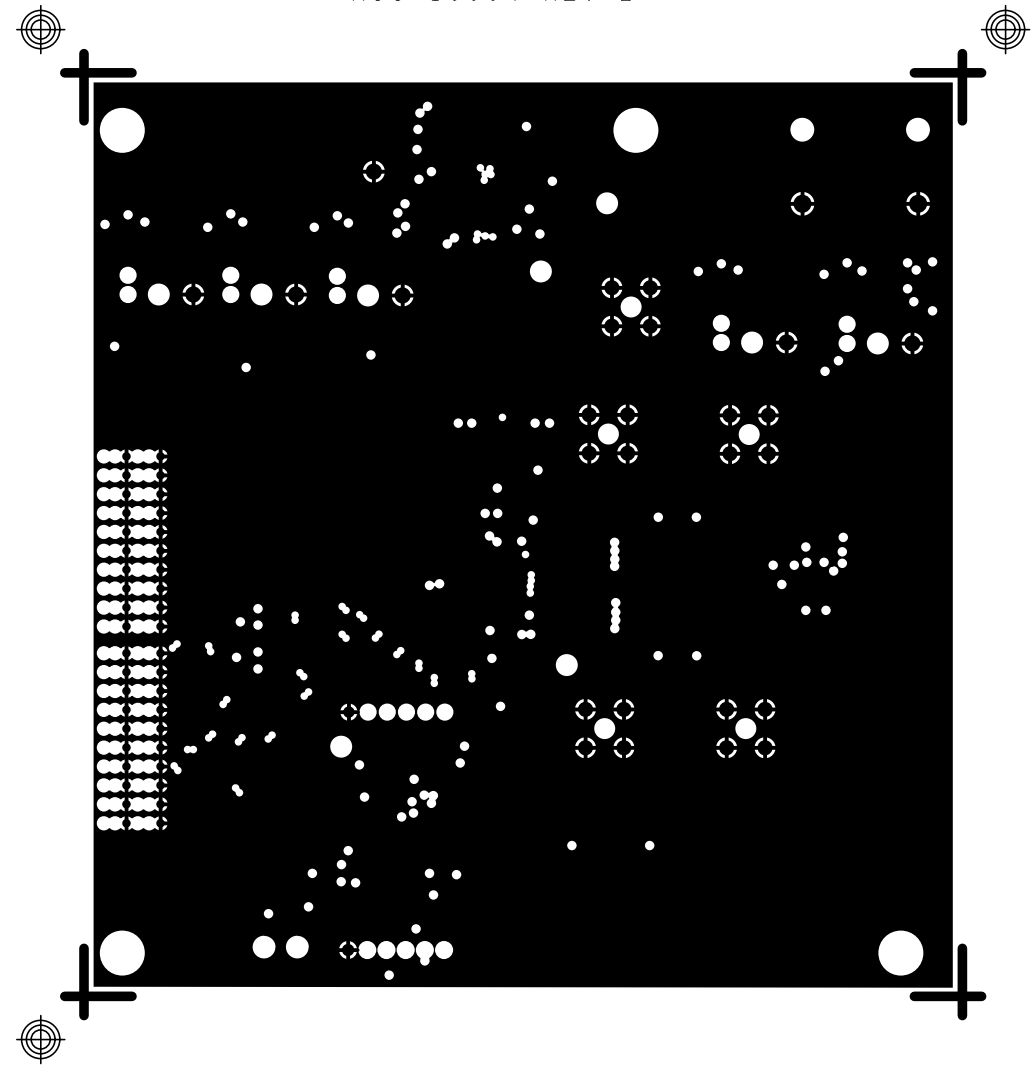
SILKSCREEN SECONDARY
AD9783-DPG2-EBZ
HSC 10004 REV B



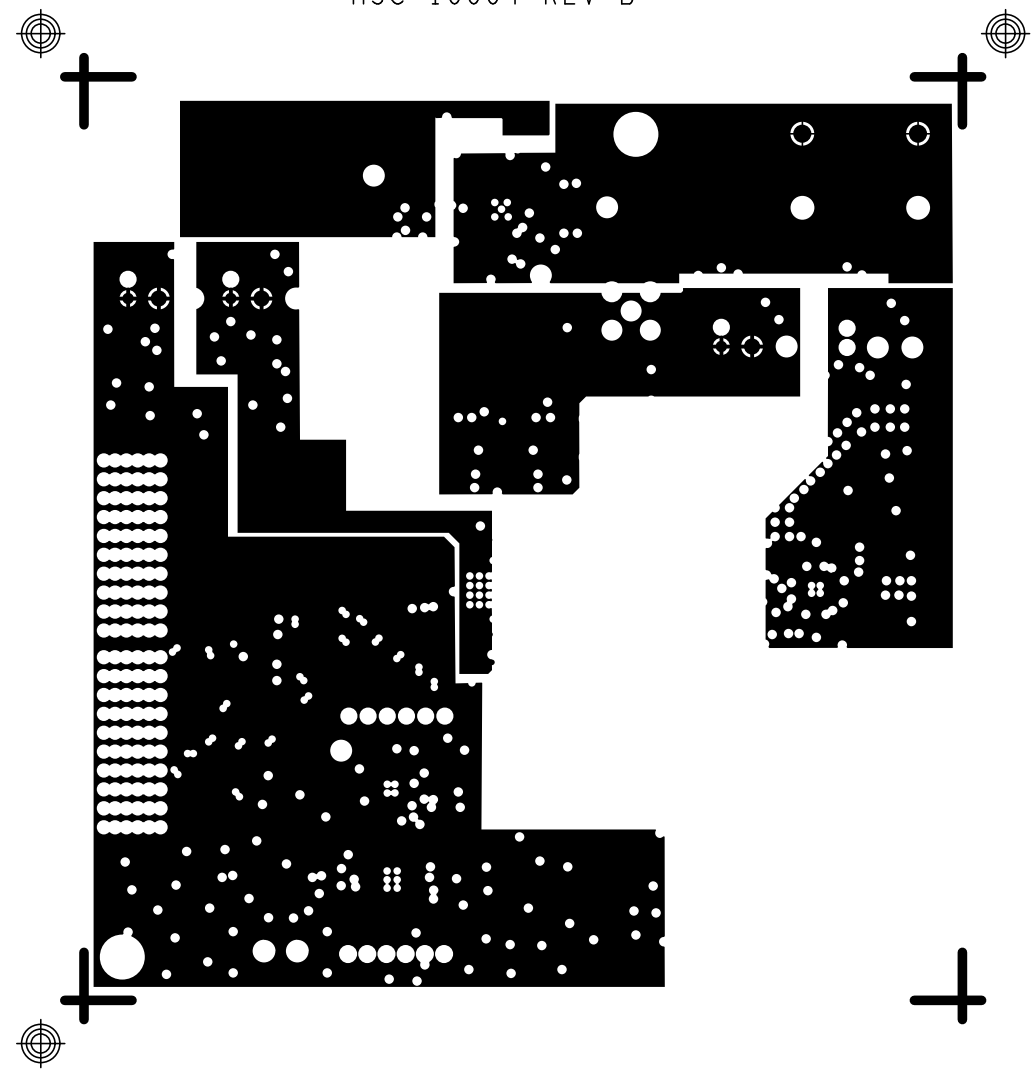
L1 PRIMARY
AD9783-DPG2-EBZ
HSC 10004 REV B



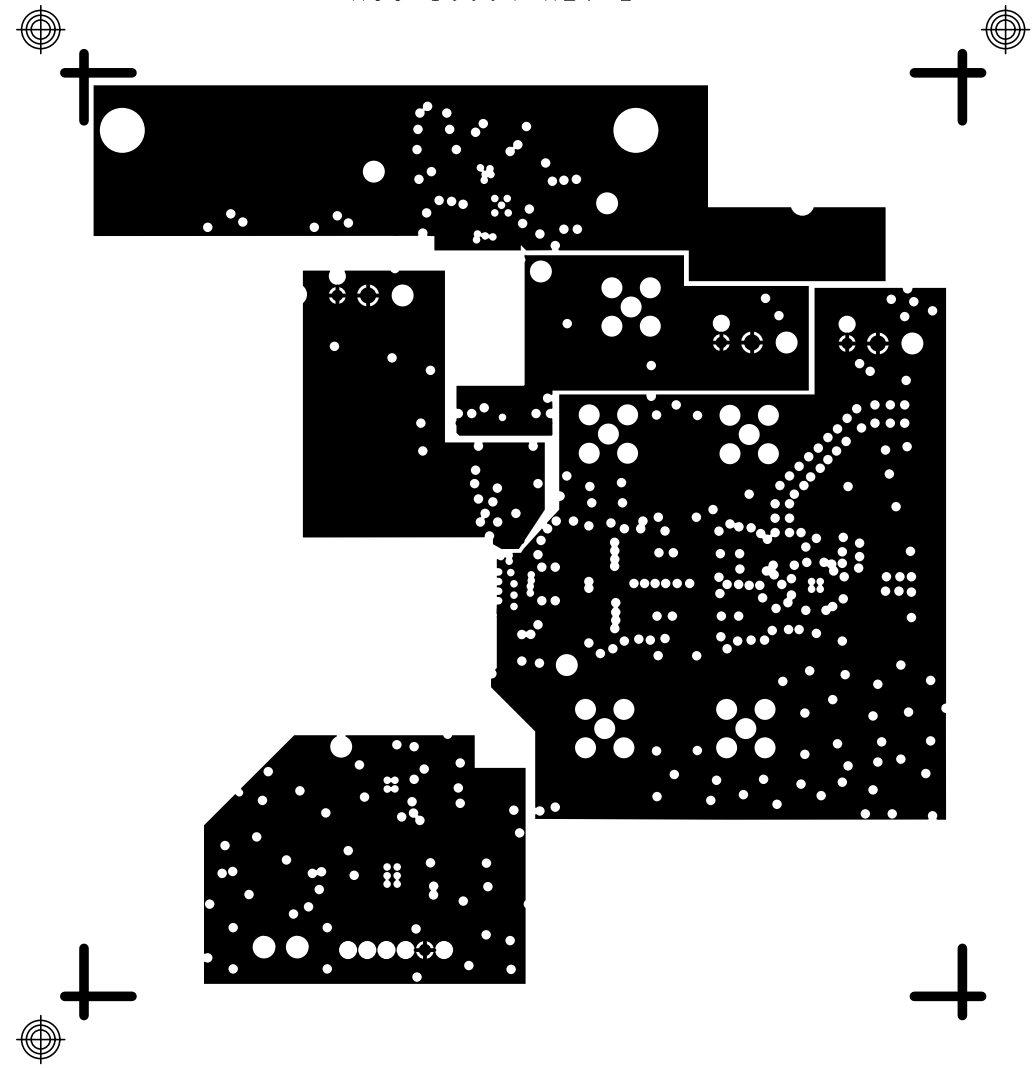
L2 GND
AD9783-DPG2-EBZ
HSC 10004 REV B



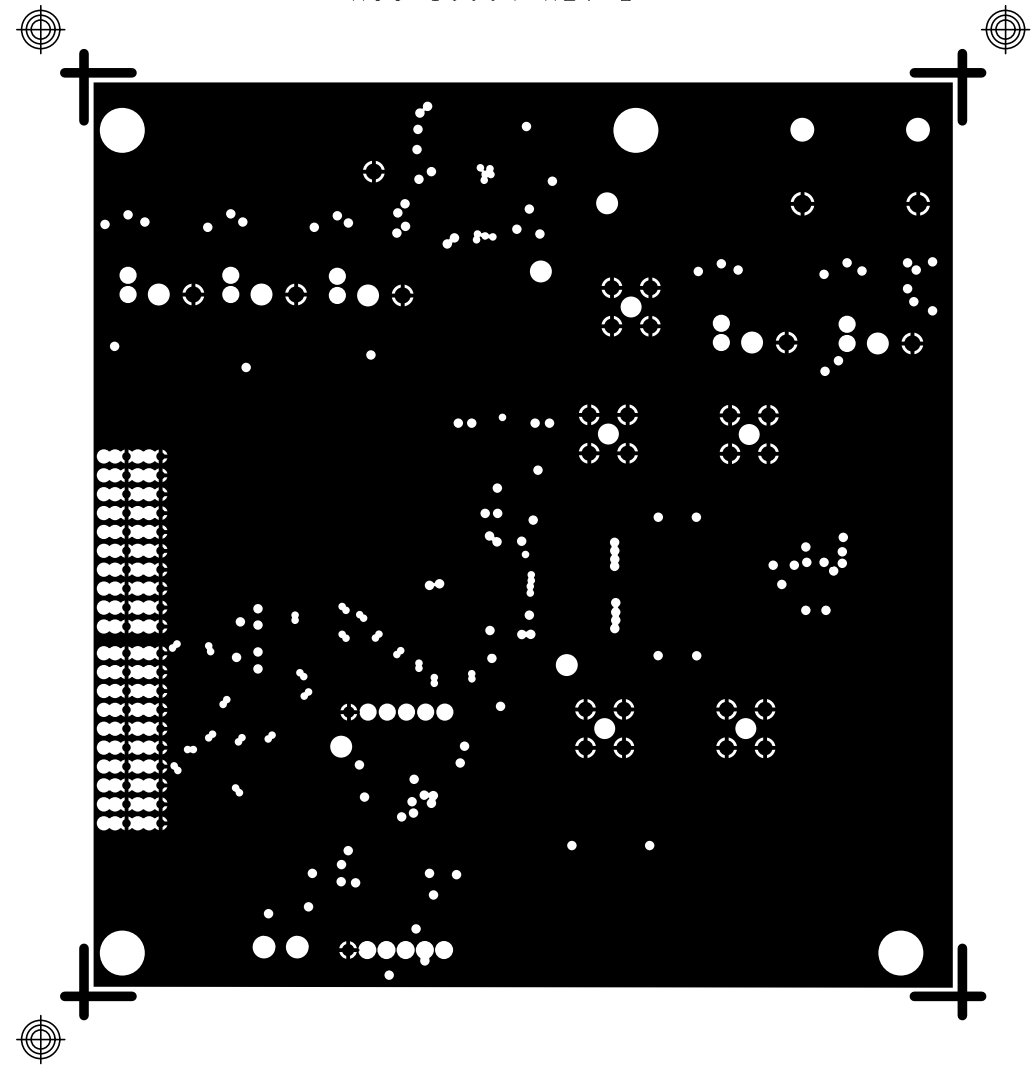
L3 PWR
AD9783-DPG2-EBZ
HSC 10004 REV B



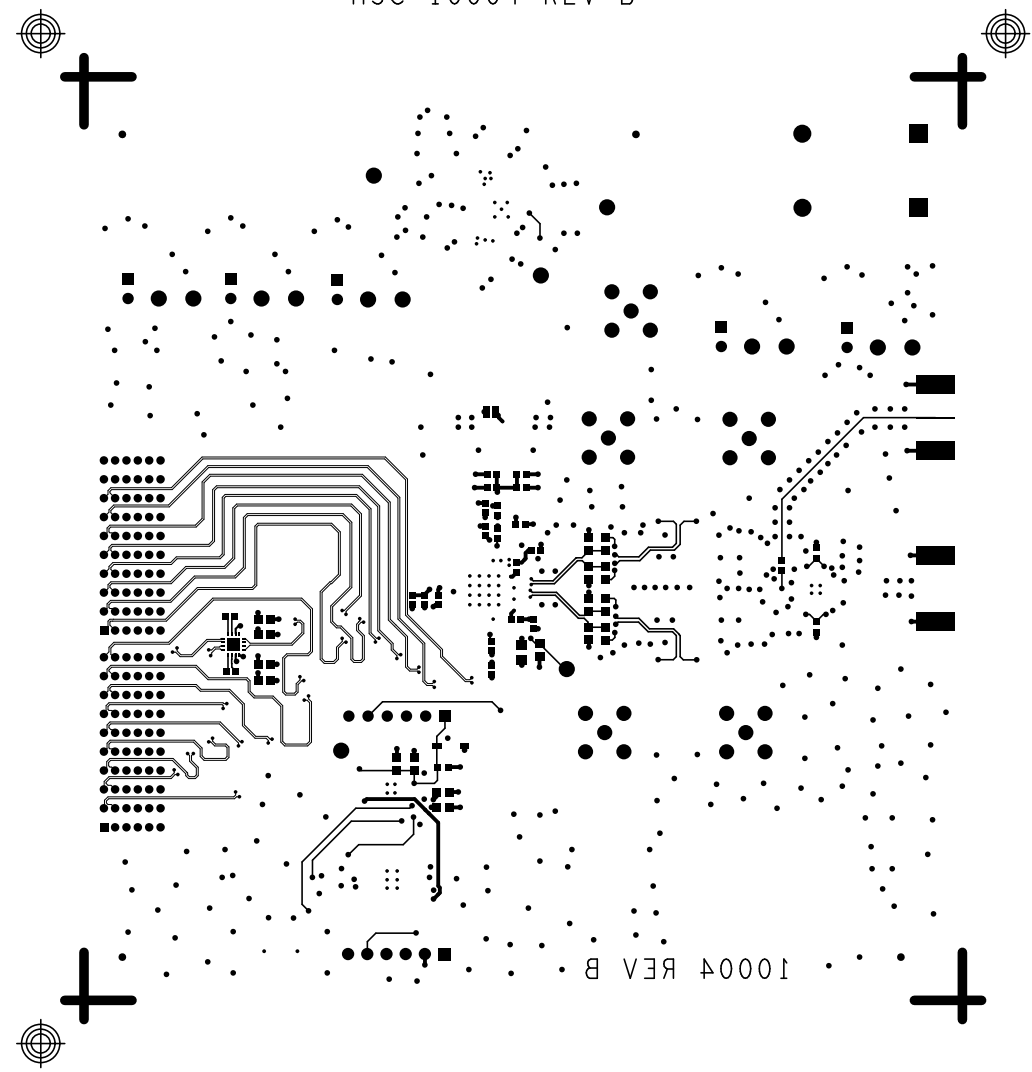
L4 PWR
AD9783-DPG2-EBZ
HSC 10004 REV B



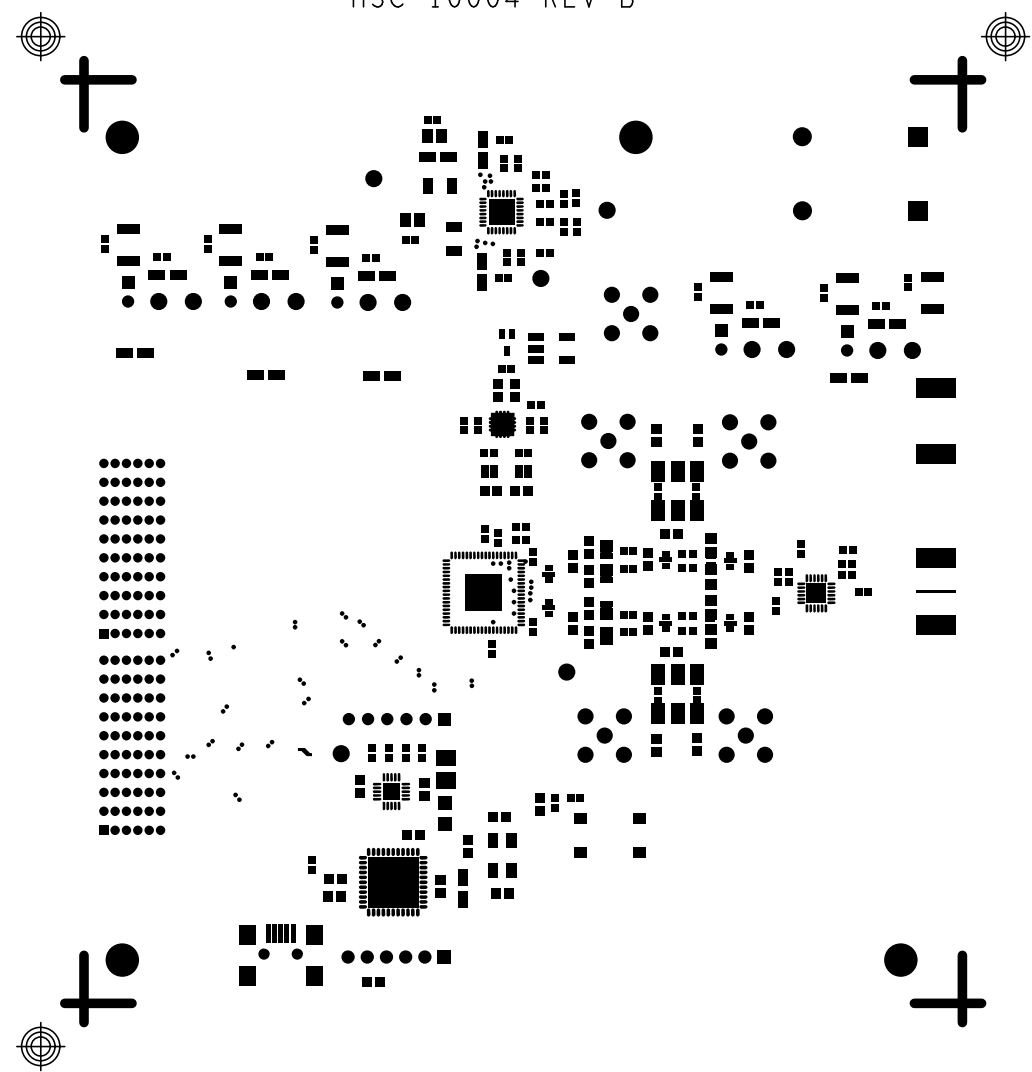
L5 GND
AD9783-DPG2-EBZ
HSC 10004 REV B



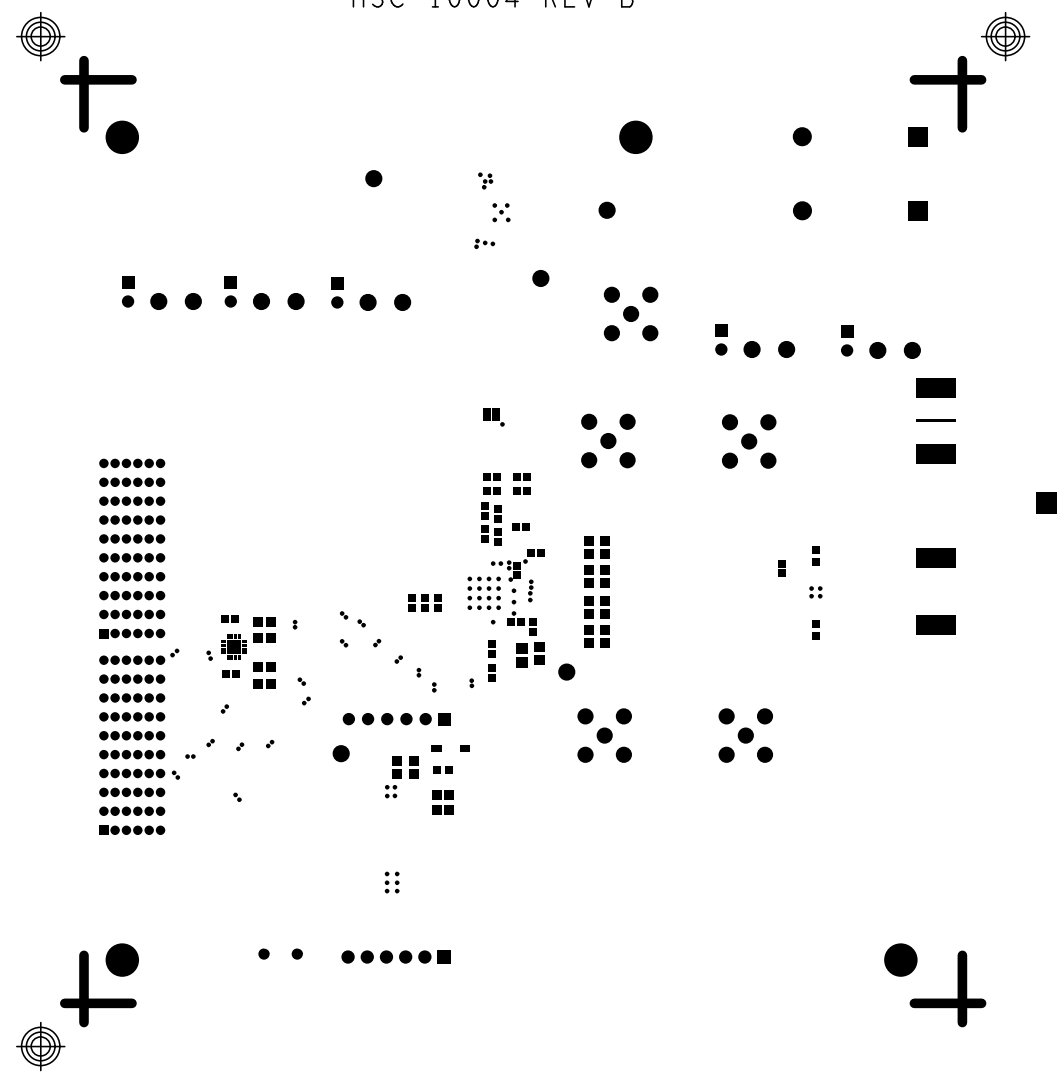
L6 SECONDARY
AD9783-DPG2-EBZ
HSC 10004 REV B



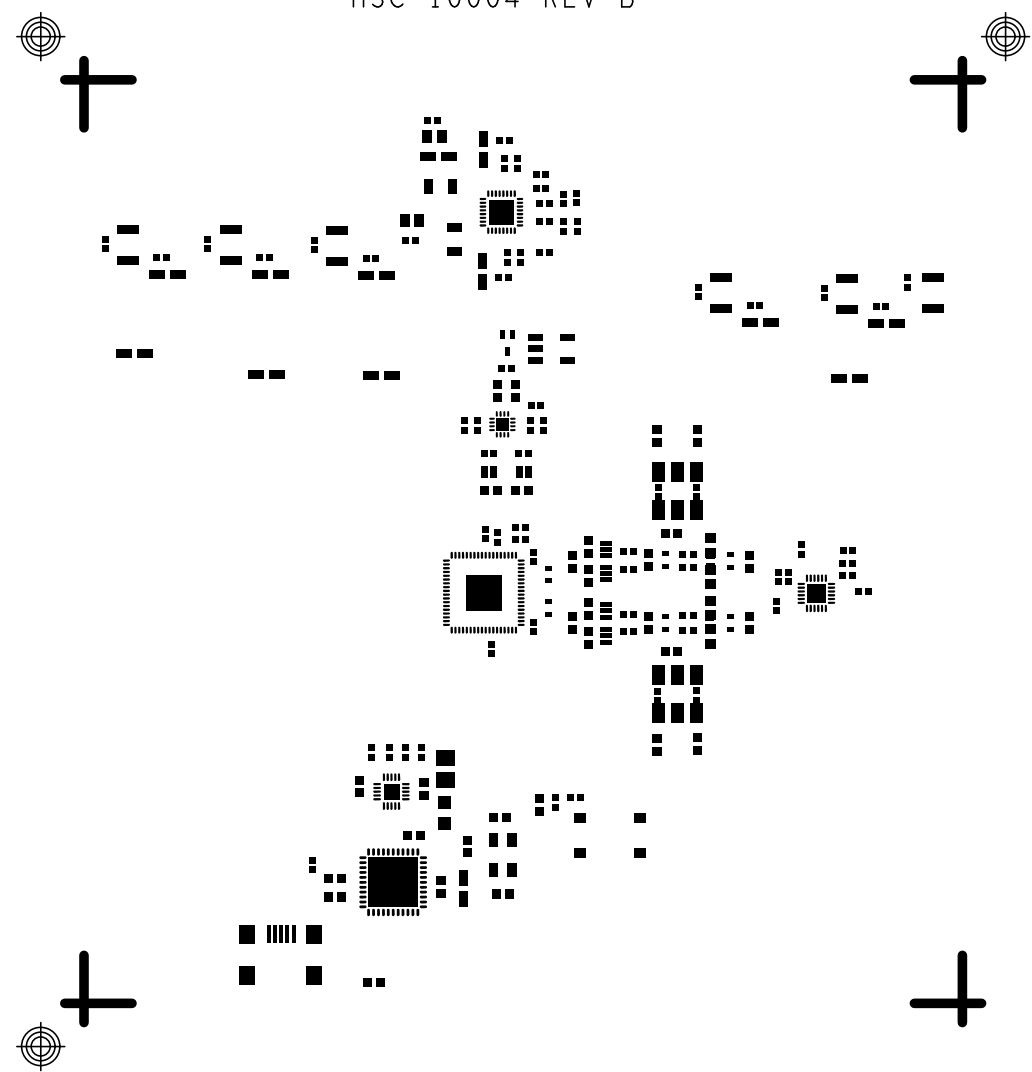
SOLDERMASK PRIMARY
AD9783-DPG2-EBZ
HSC 10004 REV B



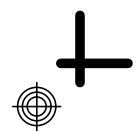
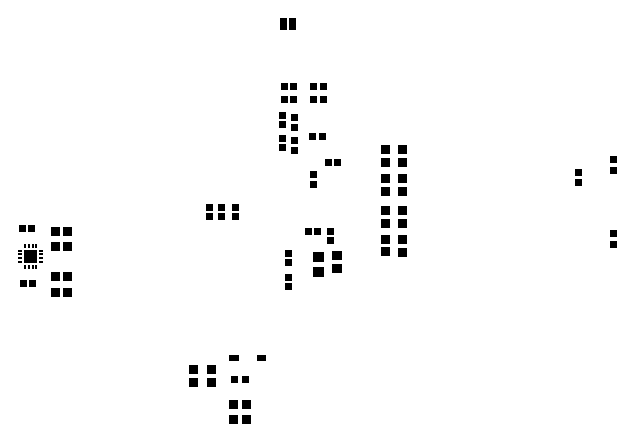
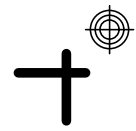
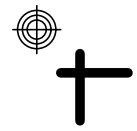
SOLDERMASK SECONDARY
AD9783-DPG2-EBZ
HSC 10004 REV B



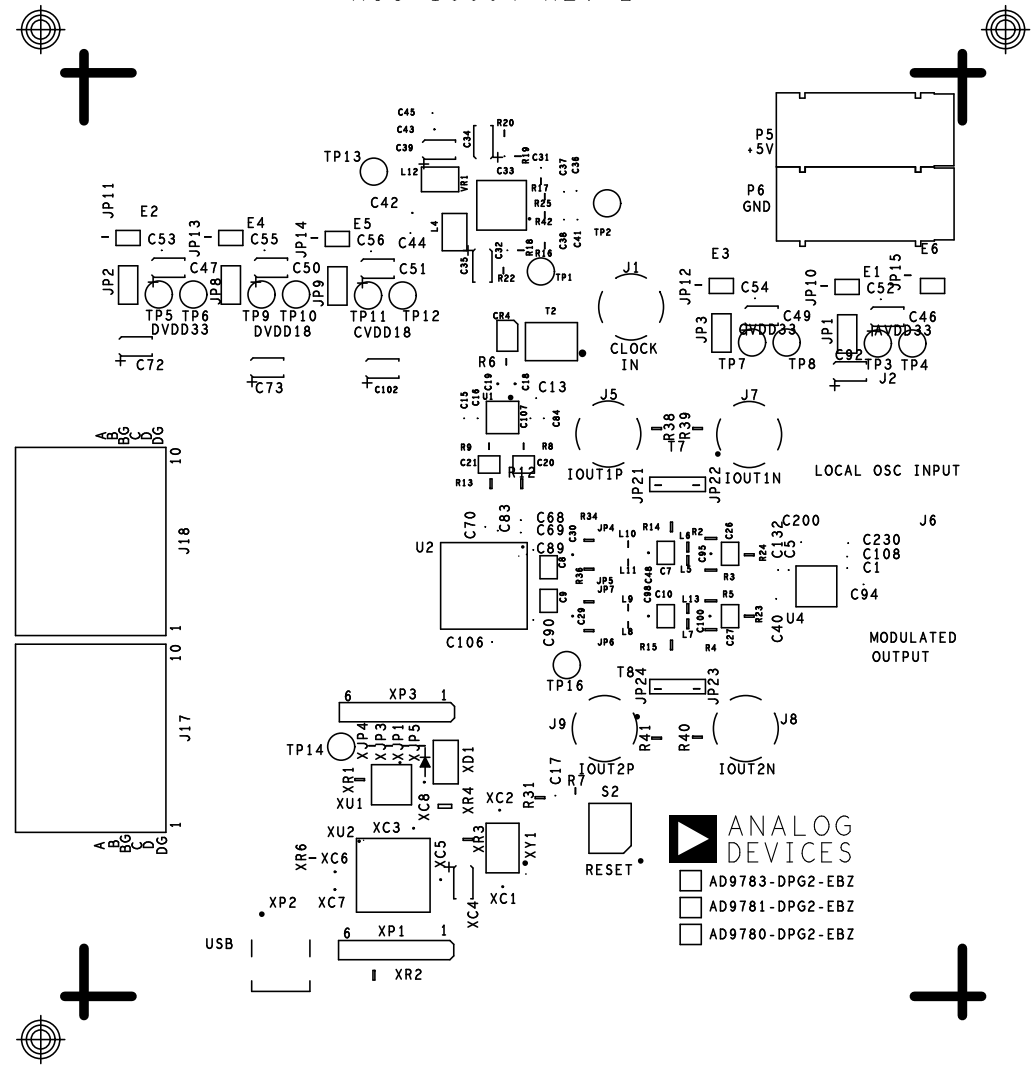
PASTEMASK PRIMARY
AD9783-DPG2-EBZ
HSC 10004 REV B



PASTEMASK SECONDARY
AD9783-DPG2-EBZ
HSC 10004 REV B



SILKSCREEN PRIMARY
 AD9783-DPG2-EBZ
 HSC 10004 REV B



ANALOG
 DEVICES

- AD9783-DPG2-EBZ
- AD9781-DPG2-EBZ
- AD9780-DPG2-EBZ