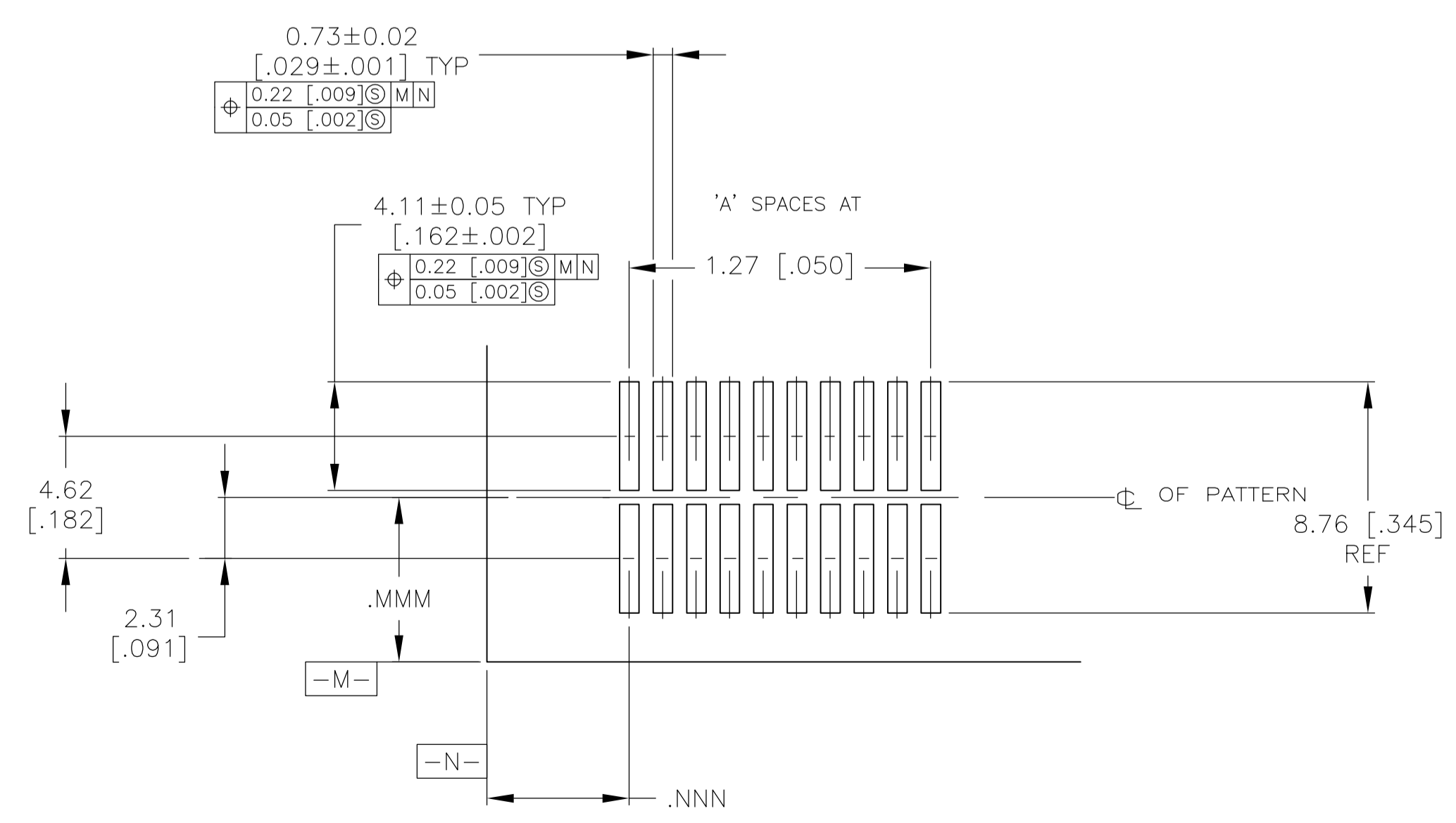
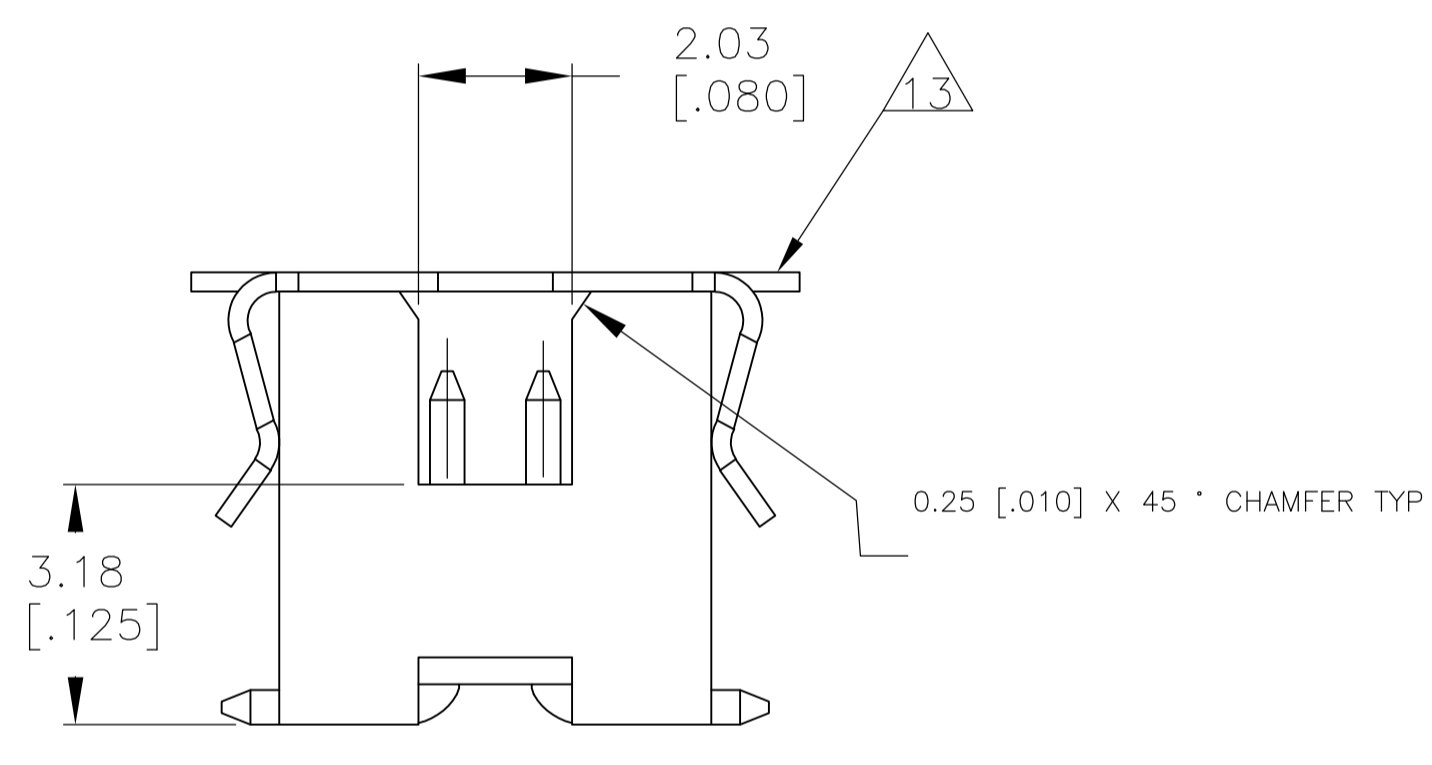
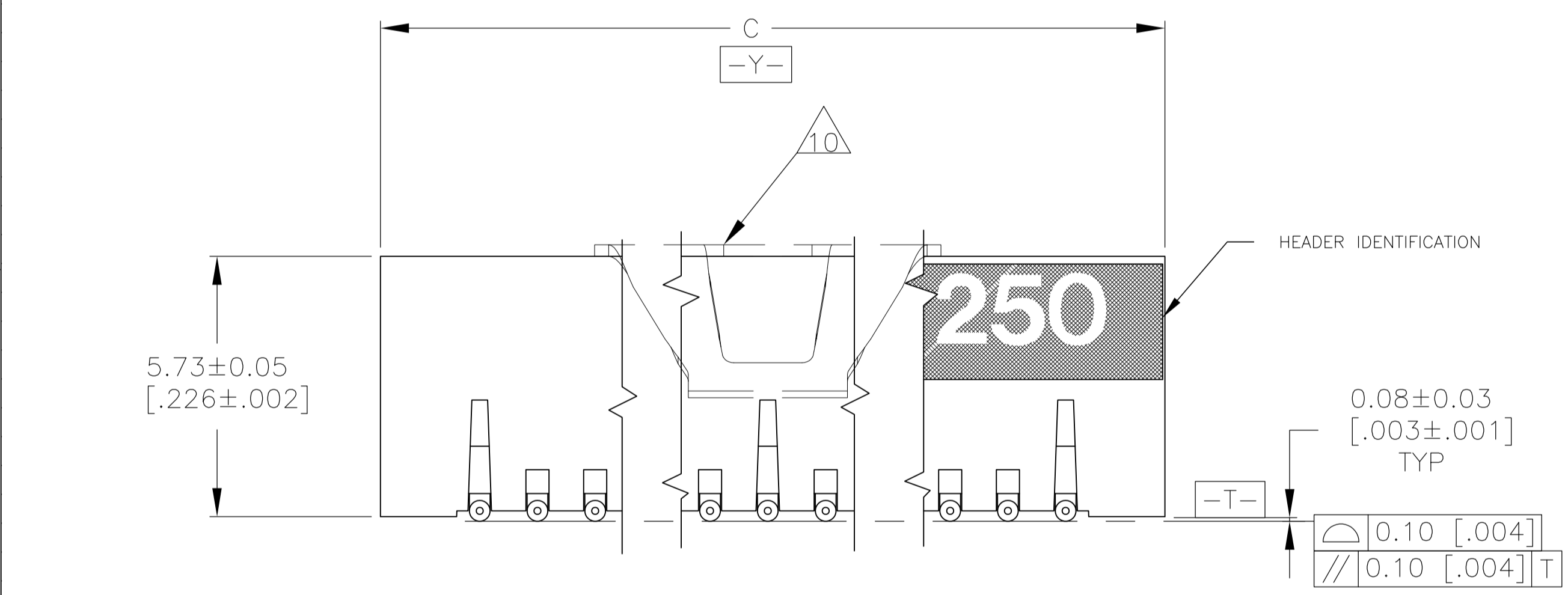
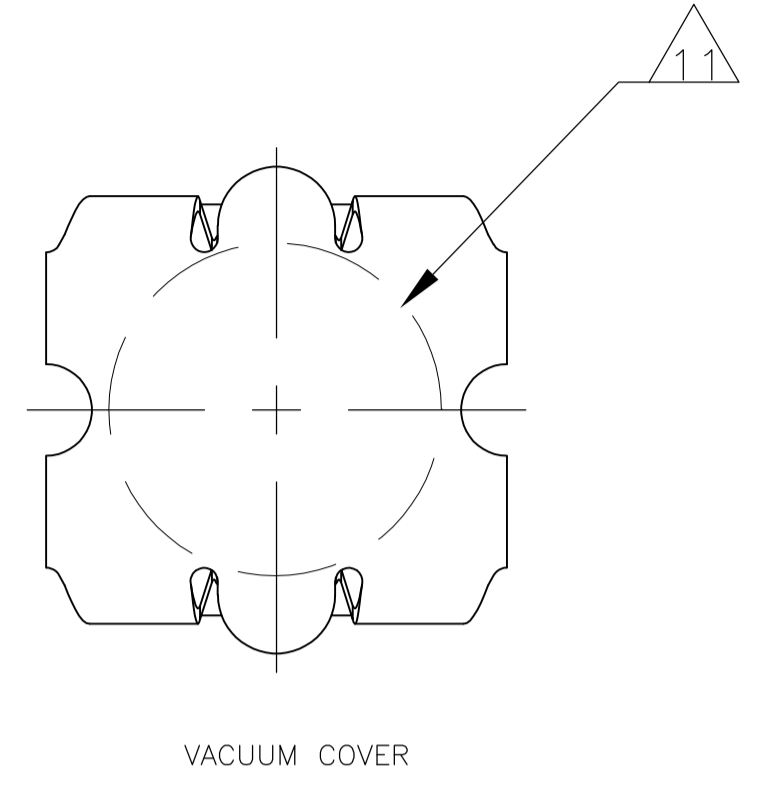
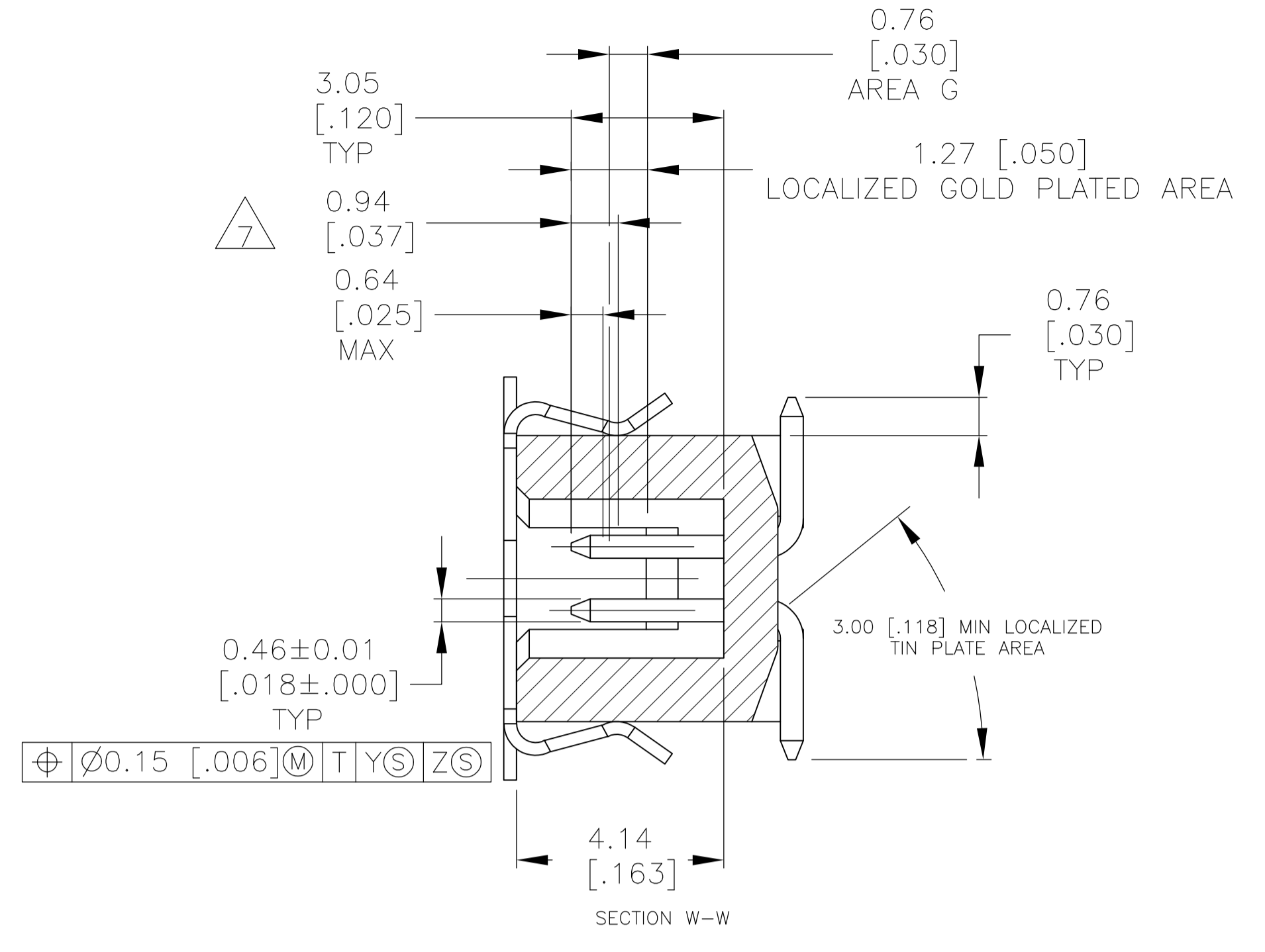
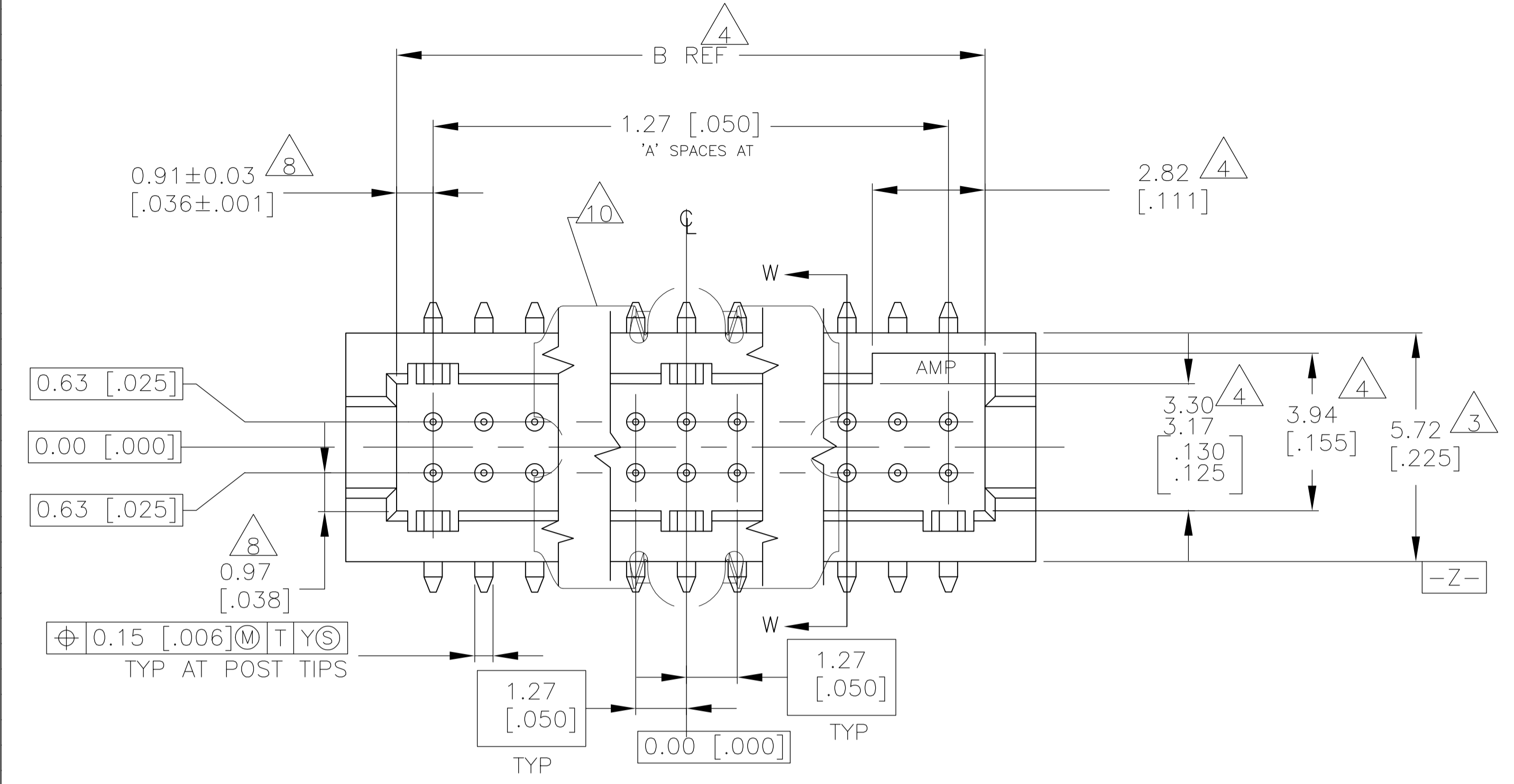


LOC		DIST		REVISIONS			
AD	00	REV	DATE	BY	CHK	APP	REV
D	EC	063C	0725	04	30NOV04	BSV	DLS
D1	REVISED	PER	ECO-09-020932		03SEP09	KK	AEG



RECOMMENDED BOARD LAYOUT
SCALE - 5:1

- 1. 0.00076[.000030] GOLD AT POINT OF MEASUREMENT, 0.00051[.000020] MIN AT THE END POINTS OF AREA G, (LOCALIZED PLATE AREA), 0.0038[.000150] TIN-LEAD ON LOCALIZED TIN-LEAD PLATED AREA, ALL OVER 0.0013[.000050] NICKEL
- 2. USE 1.32 ±0.02 [.0520] DRILLED HOLE (#55 DRILL). FINISH TO BE TIN-LEAD OVER 0.02[.001] MIN COPPER.
- 3. DIMENSION APPLIES AT BASE OF THE SHROUD.
- 4. THE NOTED DIMENSIONS APPLY AT THE MATING FACE OF THE HOUSING.
- 5. 0.0038[.00150] TIN-LEAD ON HOLD DOWN, ALL OVER 0.0013[.000050] NICKEL.
- 6. IF PLANNING TO USE MORE THAN ONE MATING PAIR OF CONNECTORS TO INTERCONNECT 2 BOARDS, PLEASE REFER TO PARA. 3.3 IN THE APPLICATION SPEC 114-7010
- 7. POINT OF MEASUREMENT
- 8. DIMENSIONS NOTED APPLY FROM THE BASIC DIMENSION LINE (NOT THE CIRCUIT CAVITY CENTER LINE) TO THE SURFACE INDICATED.
- 9. PACKAGED IN TAPE AND REEL PER EIA-481 SPECIFICATIONS, SEE CHART FOR TAPE WIDTHS.
- 10. VACUUM COVER SHOWN IN PHANTOM LINE.
- 11. 5.5 [.216] MIN DIAMETER TARGET AREA FOR VACUUM PICK-UP.
- 12. HOUSING: LCP, COLOR-BLACK
POST: PHOSPHOR BRONZE.
VACUUM COVER: ALUMINUM.
- 13. VACUUM COVER DESIGNED FOR 4.0 [.160] DIA NOZZLE.
VACUUM COVER TO BE REMOVED AFTER SOLDERING.
- 14. 0.00076[.000030] GOLD AT POINT OF MEASUREMENT, 0.00051[.000020] MIN AT END POINTS OF AREA G, LOCALIZED PLATE AREA, 0.00381[.000150] TIN ON LOCALIZED TIN PLATED AREA, ALL OVER 0.00127[.000050] NICKEL
- 15. OBSOLETE PARTS: OBSOLETE CIS STREAMLINING PER D.RENAUD/D.SINISI

REV	DESCRIPTION	DATE	BY	CHK	APP	REV	
15	OBSOLETE	24mm	15.79 [.622]	13.25 [.522]	9	20	5-147121-2-
		24mm	9.44 [.372]	6.90 [.272]	4	10	5-147121-1
		24mm	15.79 [.622]	13.25 [.522]	9	20	147121-2
15	SUPERSEDED	24mm	9.44 [.372]	6.90 [.272]	4	10	-147121-1+

THIS DRAWING IS A CONTROLLED DOCUMENT.

DIMENSIONS: mm [INCHES]	TOLERANCES UNLESS OTHERWISE SPECIFIED: 0 PLC ± - 1 PLC ± - 2 PLC ± 0.13[.005] 3 PLC ± - 4 PLC ± - ANGLES ± 0-30°	DIN T SMITH 134PR99 CHK D SIMPSON 134PR99 APP D SIMPSON 134PR99	tyco Electronics Tyco Electronics Corporation Harrisburg, Pa 17105-3608
MATERIAL	FINISH	PRODUCT SPEC APPLICATION SPEC	HEADER ASSEMBLY, SURFACE MOUNT AMP/ODU 50/50 GRID (6.35 [.250] MATED HEIGHT)
WEIGHT	SIZE A1	SCALE 10:1	RESTRICTED TO
CUSTOMER DRAWING	DRAWING NO 00779	DRAWING NO 147121	SHEET 1 OF 1 REV D1