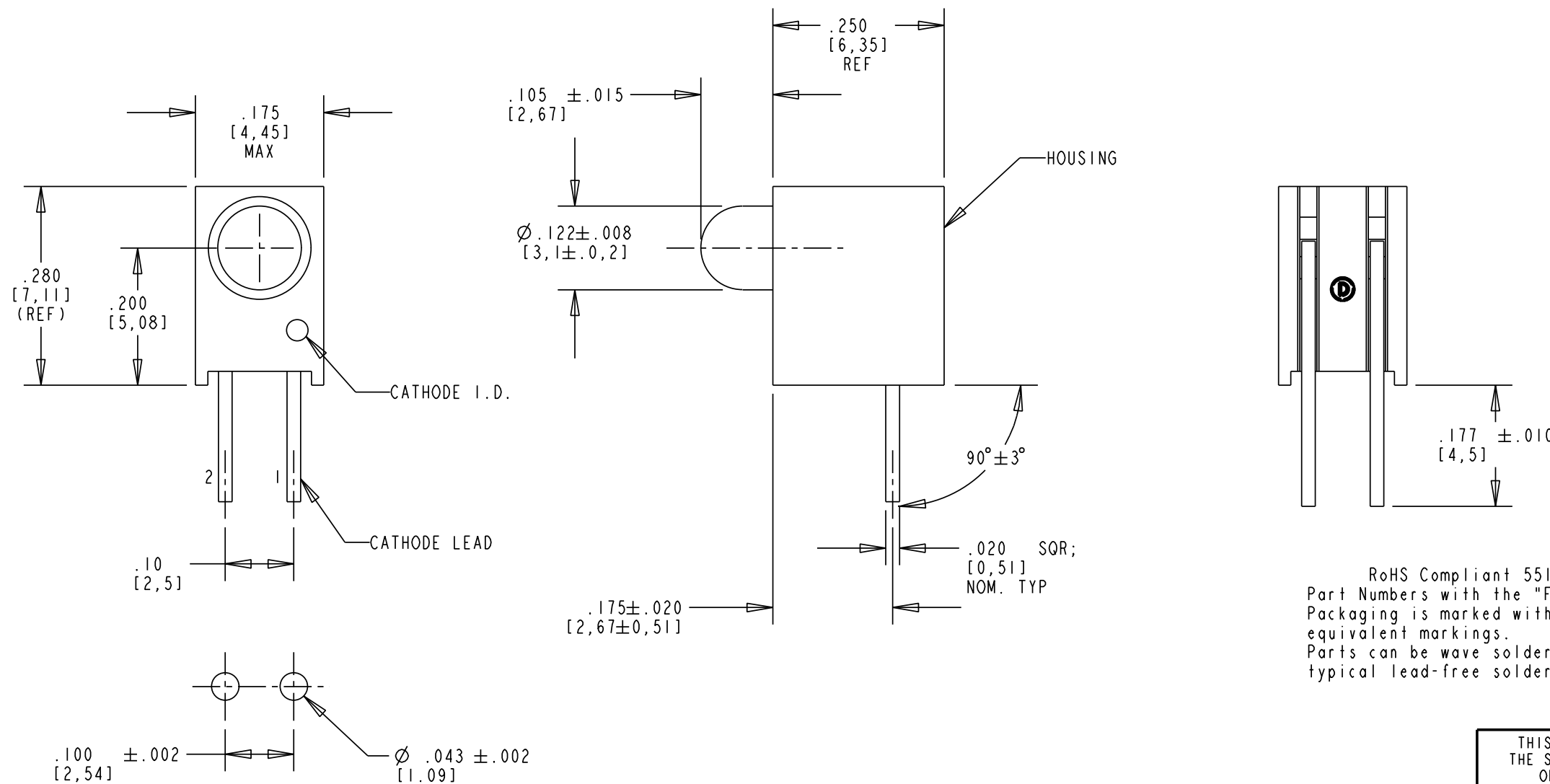


REV	ECN NO	REVISIONS	DRN	CKD	APP	DATE
A	—	NEW RELEASE	TWC			

LUMINOUS INTENSITY (mcd)		FORWARD VOLTAGE (V)		PEAK WAVELENGTH (nm)	VIEWING ANGLE 2 X 0 1/2 (°)	TEST CONDITIONS
MIN	TYP	TYP	MAX	TYP	NOM	I _F = 10 mA
5.6	16.0	2.1	3.0	563	45	I _F = 10 mA

ABSOLUTE MAXIMUM RATINGS AT T _A = 25°C								
L.E.D. COLOR	POWER DISSIPATION (mW)	DERATE LINEARLY FROM 50°C	CONTINUOUS FORWARD CURRENT (mA)	PEAK FORWARD CURRENT (mA)	PEAK REVERSE VOLTAGE (V)	LEAD SOLDERING TEMP. 5 SEC., 1/16" FROM BASE	OPERATING TEMPERATURE (°C)	STORAGE TEMPERATURE (°C)
GREEN	75	.50 mA/°C	25	60	3	260 °C	-25 TO +85	-30 TO +100



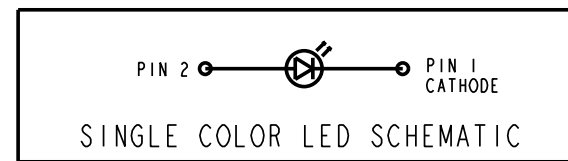
RoHS Compliant 551-0207-818F Thru Hole CBI
 Part Numbers with the "F" suffix ending are RoHS Compliant.
 Packaging is marked with "RoHS Compliant" label or equivalent markings.
 Parts can be wave soldered, dip soldered or hand soldered using typical lead-free soldering process with max 260°C temp. for 5 sec.

RECOMMENDED HOLE PATTERN GAUGE

- NOTES:
1. DIALIGHT PART NUMBER 551-0207-818F
 2. LEAD SPACING MEASURED AT HOUSING EXIT.
 3. PIN NUMBERS FOR REFERENCE ONLY, DESIGNATION NON-EXISTENT ON PART
 4. THIS ASSEMBLY CONTAINS ELECTROSTATIC DISCHARGE SENSITIVE DEVICES (ESDS). MAINTAIN ALL PRECAUTIONARY MEASURES DURING ASSEMBLY, HANDLING AND STORAGE IN ACCORDANCE WITH IPC-A-610.



ATTENTION:
 OBSERVE PRECAUTIONS FOR
 HANDLING ELECTROSTATIC
 SENSITIVE DEVICES



THIS DRAWING AND THE CONTENTS HEREIN ARE CONFIDENTIAL AND THE SOLE PROPERTY OF DIALIGHT. REPRODUCTION OF THIS DRAWING OR CONSTRUCTION OF ANY PARTS WITHIN THIS DRAWING ARE FORBIDDEN WITHOUT THE WRITTEN CONSENT OF DIALIGHT.		
SCALE: DRAWING SCALE ALL DIM'S IN: INCHES (MM)	DRAWING NUMBER C-17412	REV A
TOLERANCES: UNLESS OTHERWISE SPECIFIED FRACTIONS: ±1/64 DECIMALS (.XX): ±.01 DECIMALS (.XXX): ±.005 DECIMALS (.XXXX): ±.0005 ANGLES: ±1°	TITLE 3MM CBI GREEN DIFFUSED, 4.5MM LEAD LENGTH, RoHS COMPLIANT	
FINISH:	MATERIAL	
FSCM 83330	Dialight 1501 ROUTE 34 SOUTH FARMINGDALE, NJ 07727	
SHEET 1 OF 1 FAMILY TABLE:		