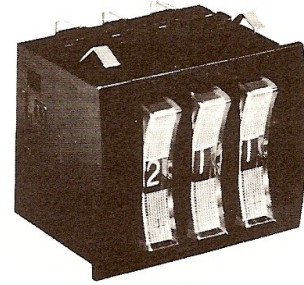




Digital Rocker Switches

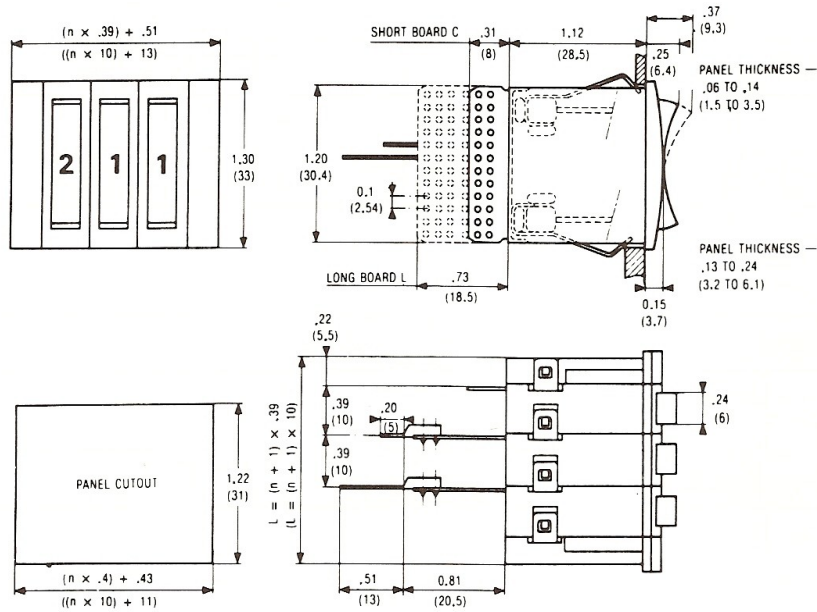


Series 84 211

- Fast switching in both directions
- Large numerals – .18 in. (4.5 mm) high
- All modules easily assembled without hardware
- Good looking – easy to read

Mechanical & Electrical Specifications		Materials
Operating Voltage: .1 to 250 V AC .1 to 50 V DC Nominal Electrical Load (Resistive Load): .1 mA to 100 mA Maximum Non-Switching Load: 1 A Contact Resistance: 70 mΩ max. Life at 50 V DC, .1 A, Resistive Load: 1 million operations Note: For voltages and currents less than the above values, please contact us.	Dielectric Strength: 600 V Operating Temperature: -13° F. to 158° F. (-25° C. to 70° C.) Storage Temperature: -40° F. to 185° F. (-40° C. to 85° C.) Dial Character Dimensions: .18 in. x .11 in. (4.5 mm x 2.8 mm) Operating Force at End of Rocker: 17 oz. (500 g)	Case: Noryl Wheel: Delrin Rocker Actuator: Makrolon* (Polycarbonate) Contacts and Tracks: Copper-Nickel-Gold Brush: Beryllium bronze Printed Circuit Board: Glass-filled epoxy (P.C. 75) *Special elements not used in other manufacturers products.

Dimensions in inches (mm)



n = Number of modules

3



Series 84 211
Rocker Switch - standard - panel mount

Reference	84 211 0	1
10 Digits Standard Module		
Standard Codes (See Truth Tables)		2
Decimal	01	/
BCD	02	
BCD & Complement	03	
2 Positions Repeating (+/-)	04	
2 Positions Repeating (5/0)	05	
BCD Complement	07	
BCD Excess 6 & Complement	08	
Circuits		3
Short	C	
Long	L	
Case		4
Black	N	
Wheels		5
Black	N	
Connections		6
Direct Soldering	1	:
Pins for Wire Wrapping	2	
Pins for PC Board Soldering	3	
Dial Stops		7
State the first and last digits. For Example 4/6 Digits locked out 0-1-2-3-7-8-9; usable 4-5-6		
Mounting Accessories		8
Pair of End Caps	79 211 847	
Spacer	79 211 836	
Separators (w/clips)	79 211 848	
Connectors:		
Wire Wrap Terminals without Lugs - X2	25 625 492	
Solder Terminals - W2	25 625 493	
Wire Wrap Terminals with Lugs - X2	25 625 494	
PC Board Solder Terminals - X3	25 625 495	
To Order Specify: 1-2/3-4-5-6:7-8		
For Example: 84 211 003/LNN1:4/6 with 79 211 847 84 211 0 switch with BCD & compliment code #3/long board with direct soldering #1 connections: Lock-out all numbers except 4, 5 & 6 and with a pair of end caps.		

3