

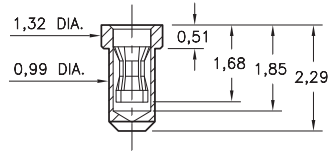
PIN RECEPTACLES

FOR 0,46 - 0,58 DIAMETER PINS

0507

0507-0-15-XX-31-XX-10-0

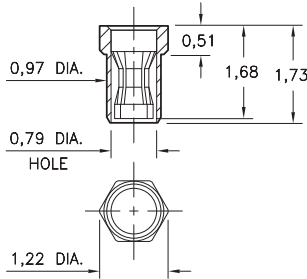
Solder mount in 1,07 min. mounting hole
Also available on 16mm wide carrier tape:
3,000 parts per 330mm reel
Order as: 0507-0-57-XX-31-XX-10-0

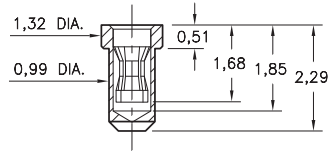
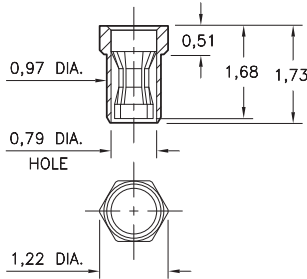


0531

0531-0-15-XX-31-XX-10-0

Hex press-fit in 1,14 plated through-hole
(Top or Bottom entry capable)



<p>0507 0507-0-15-XX-31-XX-10-0 Solder mount in 1,07 min. mounting hole Also available on 16mm wide carrier tape: 3,000 parts per 330mm reel Order as: 0507-0-57-XX-31-XX-10-0</p> 	<p>0531 0531-0-15-XX-31-XX-10-0 Hex press-fit in 1,14 plated through-hole (Top or Bottom entry capable)</p> 		

SPECIFICATIONS:

Shell Material: Brass Alloy 360, 1/2 Hard

Contact Material: Beryllium Copper Alloy 172, HT

Dimensions: Millimeters

Tolerances On: Lengths: $\pm 0,13$

Diameters: $\pm 0,051$

Angles: $\pm 2^\circ$



ORDER CODE: 05XX - 0 - 15 - XX - 31 - XX - 10 - 0

BASIC PART #

SPECIFY SHELL FINISH:

- 01 5,08 μ m TIN/LEAD OVER NICKEL
- ◆ 80 5,08 μ m TIN OVER NICKEL (RoHS)
- ◆ 15 0,25 μ m GOLD OVER NICKEL (RoHS)

SPECIFY CONTACT FINISH:

- 01 5,08 μ m TIN/LEAD OVER NICKEL
- ◆ 80 5,08 μ m TIN OVER NICKEL (RoHS)
- ◆ 27 0,76 μ m GOLD OVER NICKEL (RoHS)

SELECT CONTACT:

#31 CONTACT

(For alternate contact choices, see group A on page 248)