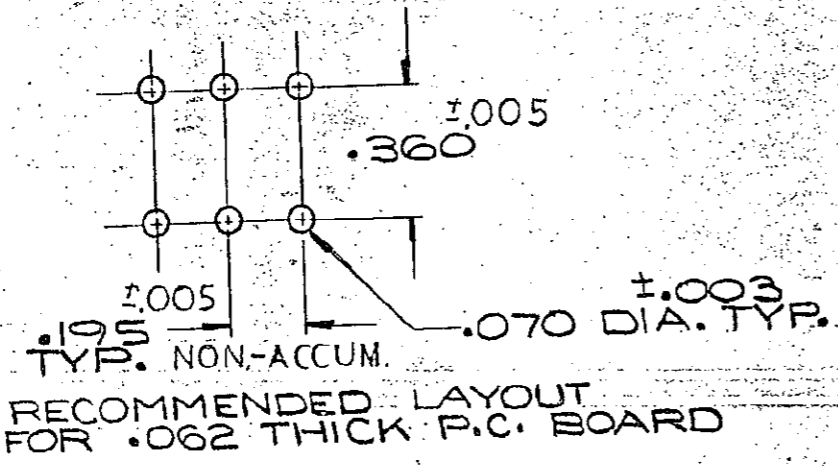
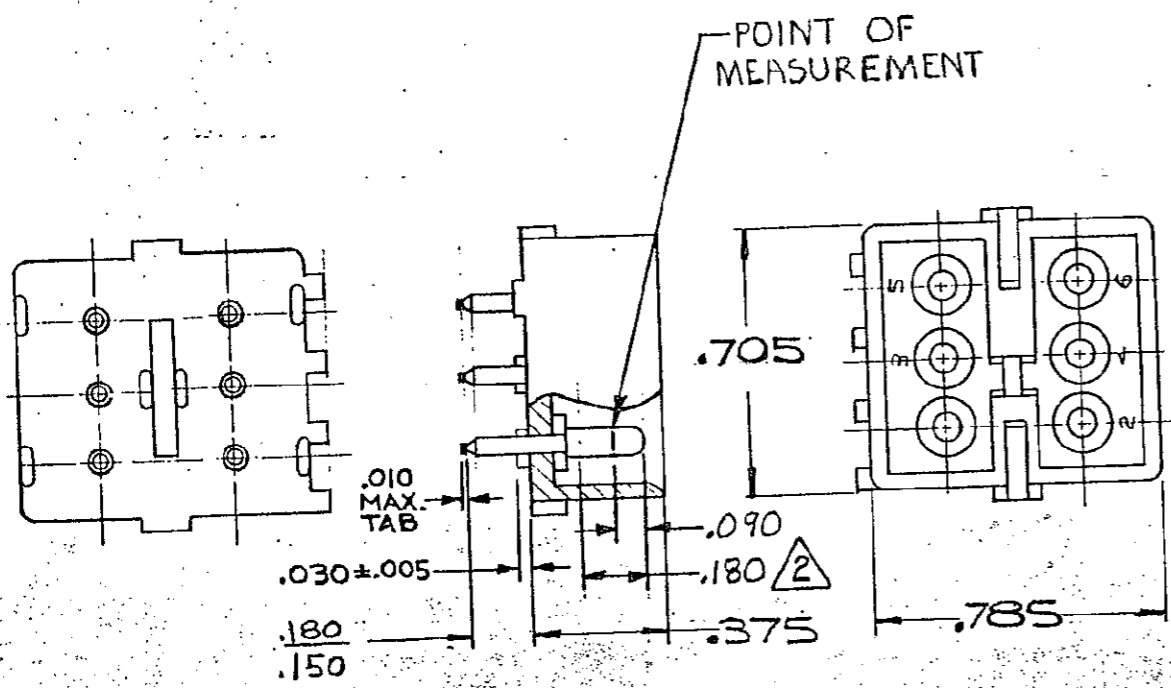


1. PARTS COMPLY WITH AMP SOLDERABILITY SPEC. NO. 109-11-3
 2. CONTACT IS PLATED OVERALL WITH .000050 NICKEL, THEN .000030 GOLD OVER CONTACT LENGTH INDICATED AND MATTE TIN ON SOLDER TAIL END.



ASSEMBLY NO.	HSG. MATL.	COLOR	PIN MATL.	FINISH
2 - 380999-0	NYLON	NATURAL	COPPER ALLOY	GOLD
1 - 380999-0	NYLON	NATURAL	COPPER ALLOY	PRE-TIN

DIMENSIONS IN INCHES. DO NOT SCALE PRINT.

DWG SIZE		NUMBER	NAME	REMARKS	ITEM NO
REQUIRED PER ASSEMBLY				CUSTOMER COPY REFERENCE ONLY	
DR	3/20/73		MATERIAL AND FINISH		
CHK	3/21/73		SEE TABLE		
DE	4-3-73		WIRE - RANGE - INSULATION		CLASS
APP	4-3-73		TOLERANCE EXCEPT AS NOTED ± .015 ± 1° 0'		TYPE PIN HEADER
LTR		REVISION RECORD	DR	CHK	DATE
U1		REVISED PER ECO-11-005294	RK	HMR	12 APR 11
DESCRIPTION		NAME 6 CIRCUIT MATE-N-LOK P.C. BOARD HEADER		LOC CM	NO B 380999
		SCALE		P	U1